

HI-ILS Z or LOC Z RWY 36

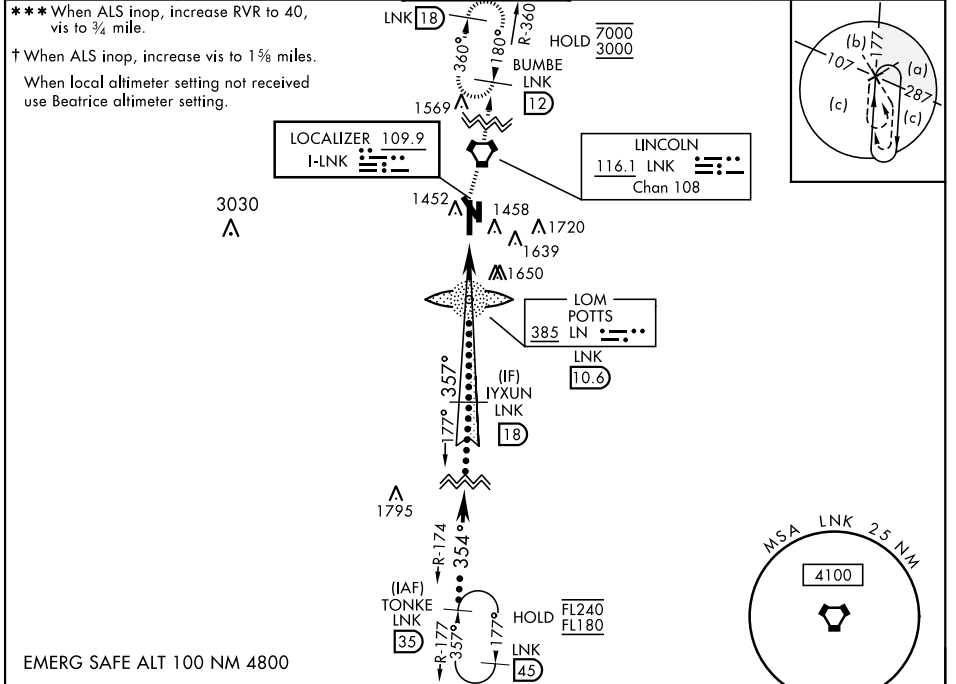
LOC I-LNK 109.9	APCH CRS 357°	Rwy Idg 12,901 TDZE 1175 Arprt Elev 1219	AL-232 [USAF]	LINCOLN (KLNK)
---------------------------	-------------------------	---	---------------	----------------

DME, RADAR required.

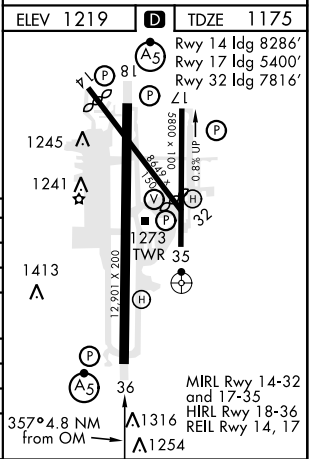
A5
MALS R
MISSED APPROACH: Climb to 1700 then climbing right turn to 3000 direct LNK VORTAC then via LNK R-360 to BUMBE 12 DME and hold.

* When ALS inop, increase RVR to 40, vis to ¾ mile.
** When ALS inop, increase vis to 1½ miles.

ATIS 118.05 290.9	OMAHA APP CON 124.0 270.3	TOWER★ 118.5 253.5	GND CON 121.9 275.8	CLNC DEL 120.7 225.4
-----------------------------	-------------------------------------	------------------------------	-------------------------------	--------------------------------



1700	3000	BUMBE LNK 12	VGSI and glidepath not coincident.		TONKE R-174 FL180
VORTAC	JEMVI 7.8	2788	IYXUN Intcp LOC 18	354°	FL180
2800		4000	GS 3.00° TCH 56		
2 NM		2.8 NM			
CATEGORY	C	D	E		
S-ILS 36*	1375/24	200	(200-½)		
S-LOC 36**	1620/45	445	(500-¾)		
CIRCLING	1760-1½	1820-2	2040-3		
	541 (600-1½)	601 (700-2)	821 (900-3)		
BEATRICE ALTIMETER SETTING					
S-ILS 36***	1466/24	291	(300-½)		
S-LOC 36†	1720/60	545	(600-1½)		
CIRCLING	1820-2	1920-2¼	2140-3¼		
	601 (700-2)	701 (800-2¼)	921 (1000-3¼)		



HI-ILS Z or LOC Z RWY 36

NC-2, 16 MAY 2024 to 13 JUN 2024

NC-2, 16 MAY 2024 to 13 JUN 2024