


HI-ILS Z or LOC Z RWY 18

LOC I-OCZ 111.1	APCH CRS 177°	Rwy Idg 12,901 TDZE 1195 Arpt Elev 1219	AL-232 [USAF]	LINCOLN (KLNK)
---------------------------	-------------------------	--	---------------	----------------

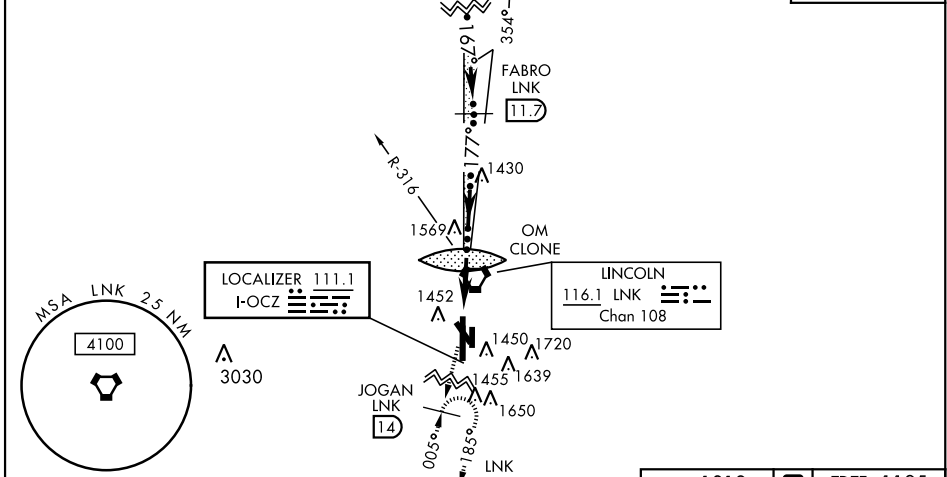
DME, RADAR required for procedure entry.

MALS  MISSED APPROACH: Climb to 3300 on LNK VORTAC R-185 to JOGAN (LNK 14 DME) and hold.

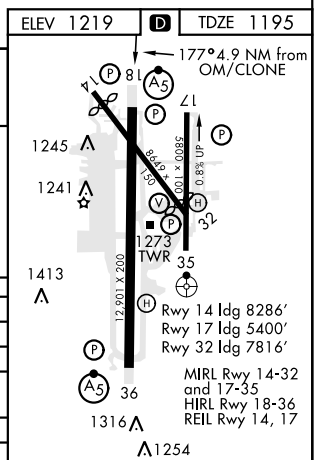
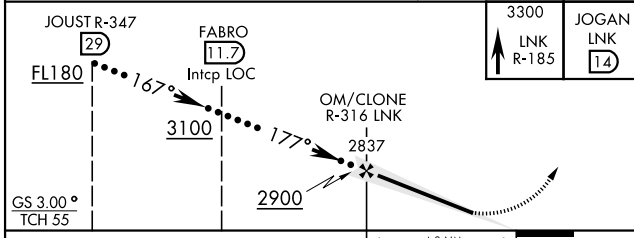
ATIS 118.05 290.9	OMAHA APP CON 124.0 270.3	TOWER* 118.5 253.5	GND CON 121.9 275.8	CLNC DEL 120.7 225.4
-----------------------------	-------------------------------------	------------------------------	-------------------------------	--------------------------------

*** When ALS inop, increase RVR to 45, vis to 7/8 mile.
† When ALS inop, increase vis to 2 miles.

When local altimeter setting not received use Beatrice altimeter.



EMERG SAFE ALT 100 NM 4800



CATEGORY	C	D	E
S-ILS 18*	1395/24	200	(200-1/2)
S-LOC 18**	1820-1 3/8	625	(700-1 1/8)
CIRCLING	1820-1 3/4	1820-2	2040-3
	601 (700-1 3/4)	601 (700-2)	821 (900-3)
BEATRICE ALTIMETER SETTING			
S-ILS 18***	1486/24	291	(200-1/2)
S-LOC 18 †	1920-1 5/8	725	(800-1 5/8)
CIRCLING	1920-2	1920-2 1/4	2140-3 1/4
	701 (800-2)	701 (800-2 1/4)	921 (1000-3 1/4)

FAF to MAP 4.9 NM					
Knots	120	140	160	180	200
Min:Sec	2:27	2:06	1:50	1:38	1:28

LINCOLN, NEBRASKA 40°51'N-96°46'W LINCOLN (KLNK)

HI-ILS Z or LOC Z RWY 18

NC-2, 16 MAY 2024 to 13 JUN 2024

NC-2, 16 MAY 2024 to 13 JUN 2024

