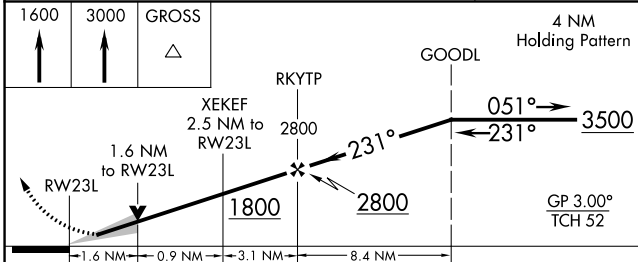
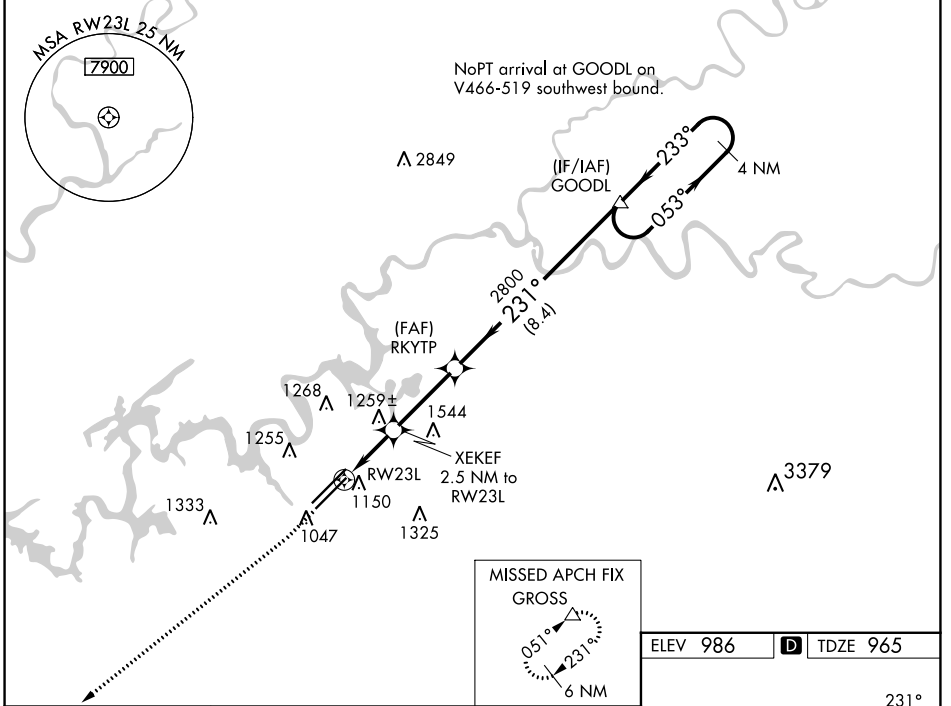


WAAS CH <b>90210</b> <b>W23B</b>	APP CRS <b>231°</b>	Rwy Idg <b>8600</b> TDZE <b>965</b> Apt Elev <b>986</b>
--	------------------------	---

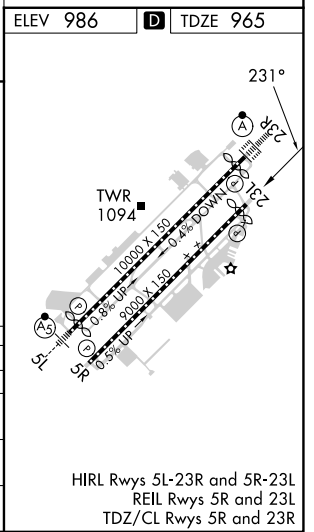
# RNAV (GPS) RWY 23L

MC GHEE TYSON (TYS)

RNP APCH - GPS.		MISSED APPROACH: Climb to 1600 then climb to 3000 direct GROSS and hold.				
⚠ For uncompensated Baro-VNAV systems, LNAV/VNAV NA below -10° C or above 54° C. ASR		ATIS <b>128.35</b>	KNOXVILLE APP CON <b>123.9 360.8</b>	KNOXVILLE TOWER <b>121.2 257.8</b>	GND CON <b>121.9 348.6</b>	CLNC DEL <b>121.65</b>



1600	3000	GROSS	△	
RWY 23L		GP 3.00° TCH 52		
1.6 NM	0.9 NM	3.1 NM	8.4 NM	
CATEGORY	A	B	C	D
LPV DA		1165/40	200 (200-3/4)	
LNAV/VNAV DA		1383-13/8	418 (500-13/8)	
LNAV MDA	1520/55	555 (600-1)	1520-15/8	555 (600-13/8)
<b>C</b> CIRCLING	1520-1 534 (600-1)	1620-1 634 (700-1)	1660-2 674 (700-2)	1900-3 914 (1000-3)



SE-1, 16 MAY 2024 to 13 JUN 2024

SE-1, 16 MAY 2024 to 13 JUN 2024

HIRL Rwy 5L-23R and 5R-23L  
REIL Rwy 5R and 23L  
TDZ/CL Rwy 5R and 23R