

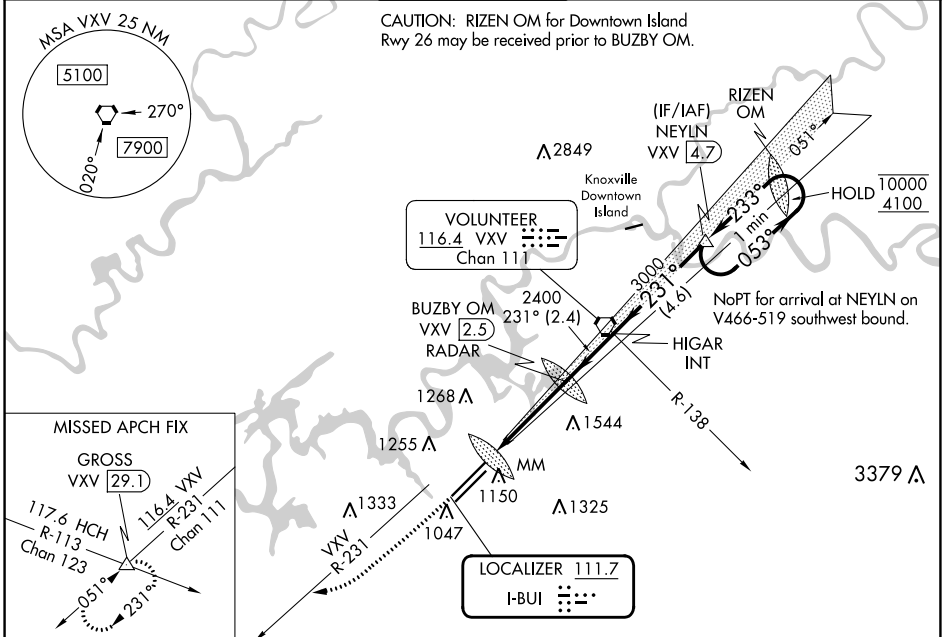
LOC I-BUI <b>111.7</b>	APP CRS <b>231°</b>	Rwy ldg TDZE Apt Elev	<b>9495</b> <b>984</b> <b>986</b>
---------------------------	------------------------	-----------------------------	---

# ILS RWY 23R (SA CAT I)

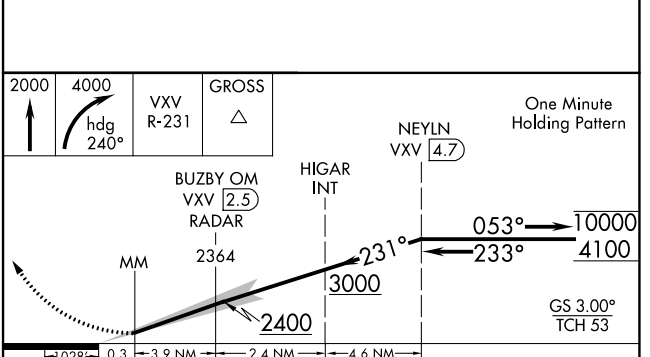
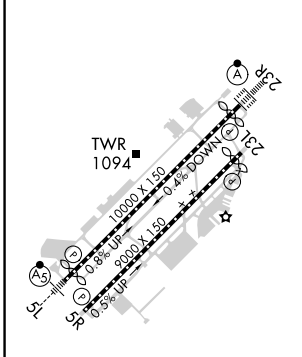
MC GHEE TYSON (TYS)

DME or RADAR required.		ALSF-2	MISSED APPROACH: Climb to 2000 then climbing right turn to 4000 on heading 240° and VXV VORTAC R-231 to GROSS INT/VXV 29.1 DME and hold.	
ASR Requires specific OPSEC, MSPEC, or LOA approval.				

ATIS <b>128.35</b>	KNOXVILLE APP CON <b>123.9 360.8</b>	KNOXVILLE TOWER <b>121.2 257.8</b>	GND CON <b>121.9 348.6</b>	CLNC DEL <b>121.65</b>
-----------------------	---	---------------------------------------	-------------------------------	---------------------------



ELEV 986	<b>D</b>	TDZE 984
----------	----------	----------



CATEGORY	A	B	C	D
S-ILS 23R	RA 150/14 150 DA 1134			

HIRL Rws 5L-23R and 5R-23L  
REIL Rws 5R and 23L  
TDZ/CL Rws 5R and 23R

## SA CATEGORY I ILS- SPECIAL AIRCREW & AIRCRAFT CERTIFICATION REQUIRED

SE-1, 16 MAY 2024 to 13 JUN 2024

SE-1, 16 MAY 2024 to 13 JUN 2024