

# HI-VOR or TACAN RWY 23R

VORTAC VXV <b>116.4</b> Chan <b>111</b>	APCH CRS <b>224°</b>	Rwy ldg TDZE Arprt Elev <b>9495</b> <b>984</b> <b>986</b>
---	-------------------------	--

[USAF]

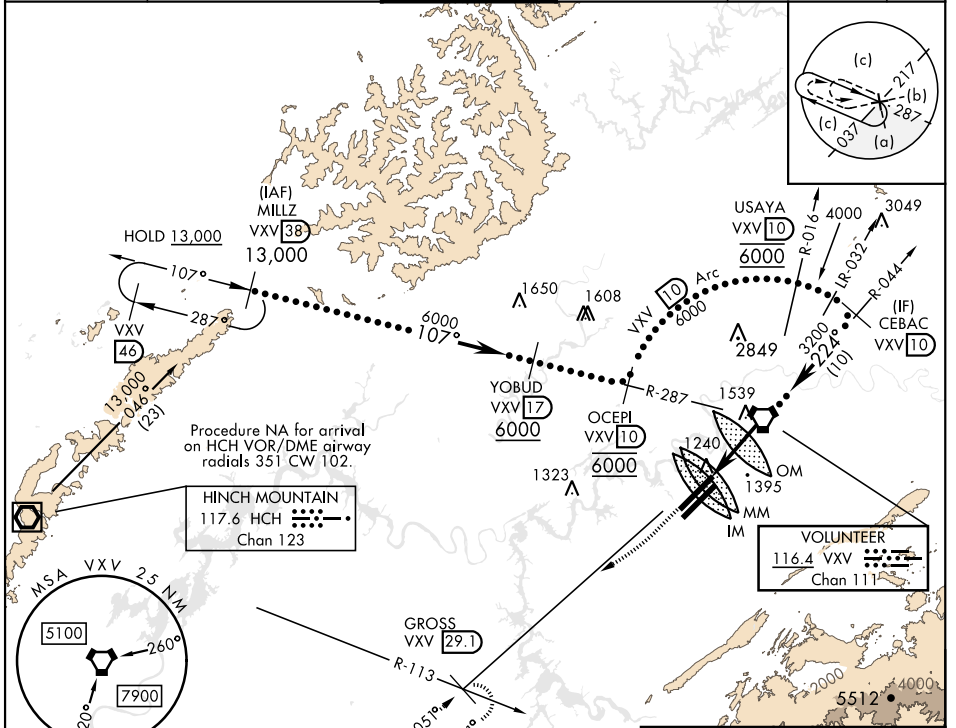
MC GHEE TYSON (KTYS)

DME required  
\* When ALS inop, increase vis to 1½ miles.

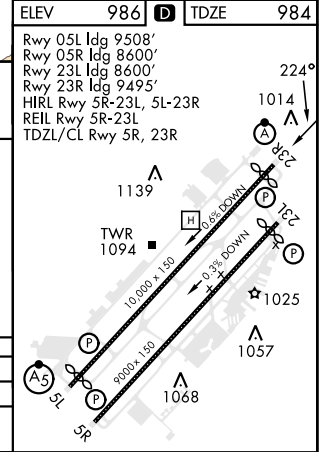
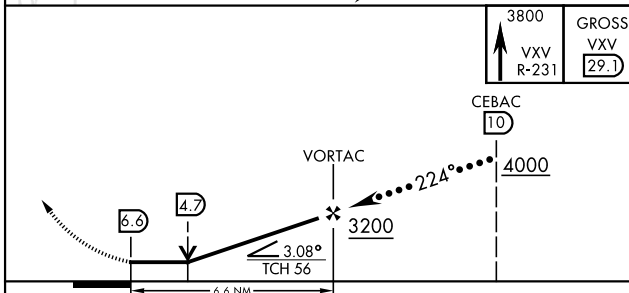


MISSED APPROACH: Climb to 3800 direct on VXV VORTAC R-231 to GROSS/29.1 DME and hold.

ATIS <b>128.35</b>	KNOXVILLE APP CON <b>123.9 360.8</b>	KNOXVILLE TOWER <b>121.2 257.8</b>	GND CON <b>121.9 348.6</b>	CLNC DEL <b>121.65</b>	ASR
-----------------------	---	---------------------------------------	-------------------------------	---------------------------	-----



EMERG SAFE ALT 100 NM 8900



# HI-VOR or TACAN RWY 23R

SE-1, 16 MAY 2024 TO 13 JUN 2024

SE-1, 16 MAY 2024 TO 13 JUN 2024