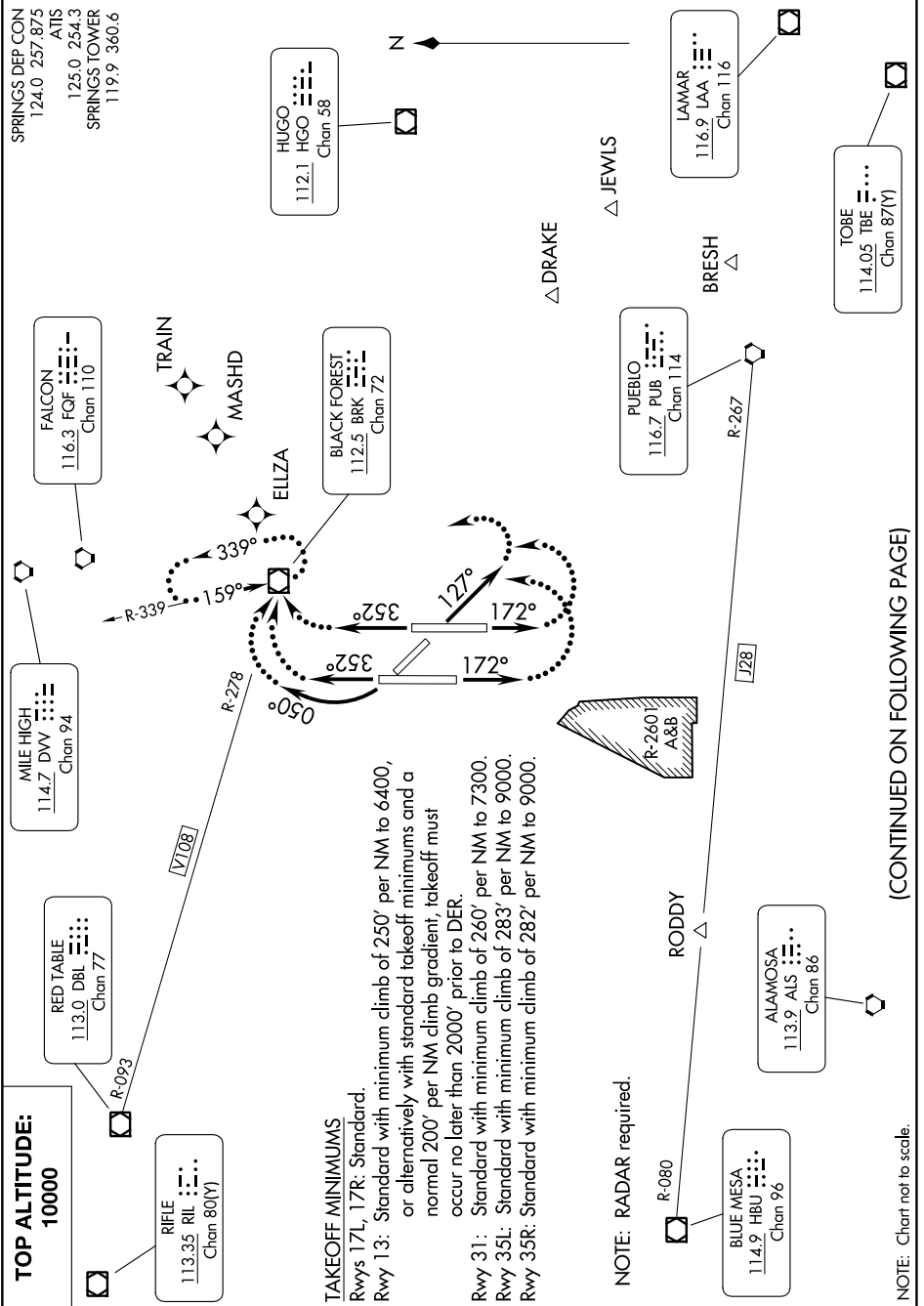


SPRINGS SIX DEPARTURE

AL-87 (FAA)

CITY OF COLORADO SPRINGS MUNI (COS)
COLORADO SPRINGS, COLORADO

SW-1, 16 MAY 2024 to 13 JUN 2024



SPRINGS SIX DEPARTURE

COLORADO SPRINGS, COLORADO
CITY OF COLORADO SPRINGS MUNI (COS)

(CONTINUED ON FOLLOWING PAGE)

SW-1, 16 MAY 2024 to 13 JUN 2024

NOTE: Chart not to scale.

TAKEOFF MINIMUMS

- Rwys 17L, 17R: Standard.
- Rwy 13: Standard with minimum climb of 250' per NM to 6400, or alternatively with standard takeoff minimums and a normal 200' per NM climb gradient, takeoff must occur no later than 2000' prior to DER.
- Rwy 31: Standard with minimum climb of 260' per NM to 7300.
- Rwy 35L: Standard with minimum climb of 283' per NM to 9000.
- Rwy 35R: Standard with minimum climb of 282' per NM to 9000.

NOTE: RADAR required.