

| | | |
|-------------|----------|-------------|
| APP CRS | Rwy Idg | 4842 |
| 173° | TDZE | 651 |
| | Apt Elev | 658 |

RNAV (GPS) RWY 17

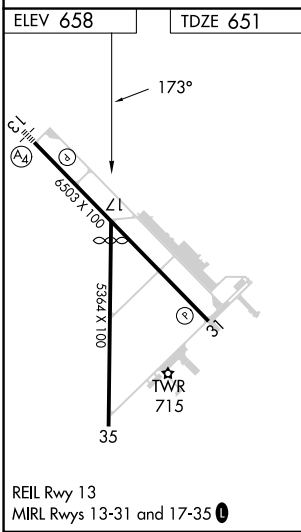
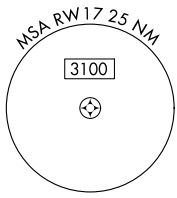
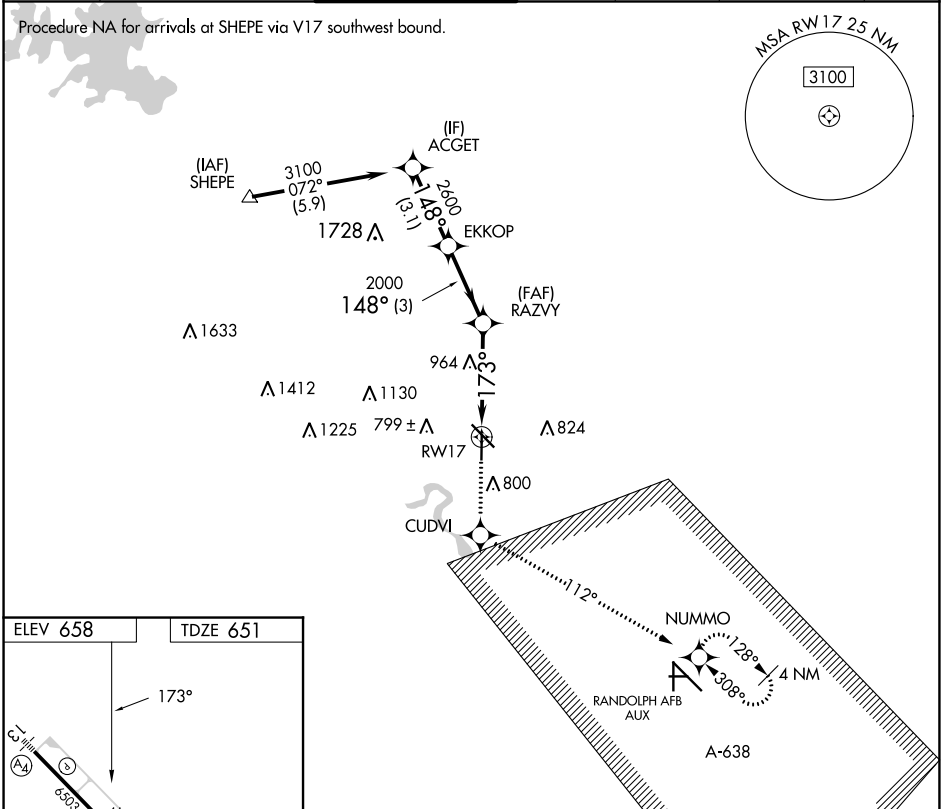
NEW BRAUNFELS NTL (B.A.Z)

RNP APCH.

⚠ When local altimeter setting not received, use San Marcos Rgnl altimeter setting and increase all MDAs 60 feet and visibility Cat C ¼ SM. VDP NA when using San Marcos Rgnl altimeter setting.

MISSED APPROACH: Climb to 3500 direct CUDVI and via 112° track to NUMMO and hold, continue climb-in-hold to 3500.

| | | | | | | |
|----------------|-----------------------|----------------------------|----------------|---------------|------------------------------------|--------------|
| ATIS | SAN ANTONIO APP CON | NEW BRAUNFELS TOWER* | GND CON | CLNC DEL | CLNC DEL | UNICOM |
| 119.325 | 124.45 335.625 | 127.05 (CTAF) 285.4 | 120.175 | 134.75 | 134.75 (When twr closed) | 122.7 |



| | | | |
|----------|------------------|-------------|-------------------------------|
| 3500 | CUDVI | NUMMO | ACGET |
| ↑ | ✧ | ✧ | |
| | tr 112° | | |
| | | RAZVY | EKKOP |
| | 1.6 NM to RWY 17 | 2000 | 3100 |
| | TCH 45 | 2600 | |
| | 173° | 148° | |
| | 1.6 NM | 2.5 NM | 3.1 NM |
| CATEGORY | A | B | C |
| LNAV MDA | 1220-1 | 569 (600-1) | 1220-1 5/8 569 (600-1 5/8) |
| | | | 1220-1 3/4 569 (600-1 3/4) |

Procedure Turn NA

SC-3, 18 APR 2024 to 16 MAY 2024

SC-3, 18 APR 2024 to 16 MAY 2024