

VOR/DME JAC	APP CRS	Rwy Idg	6300
115.4	193°	TDZE	6451
Chan 101		Apt Elev	6451

VOR RWY 19

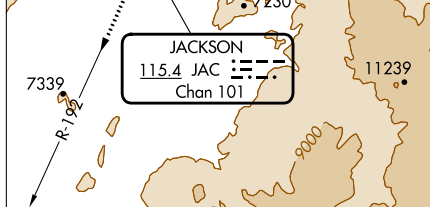
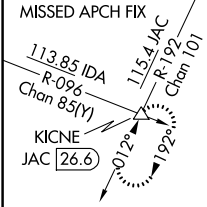
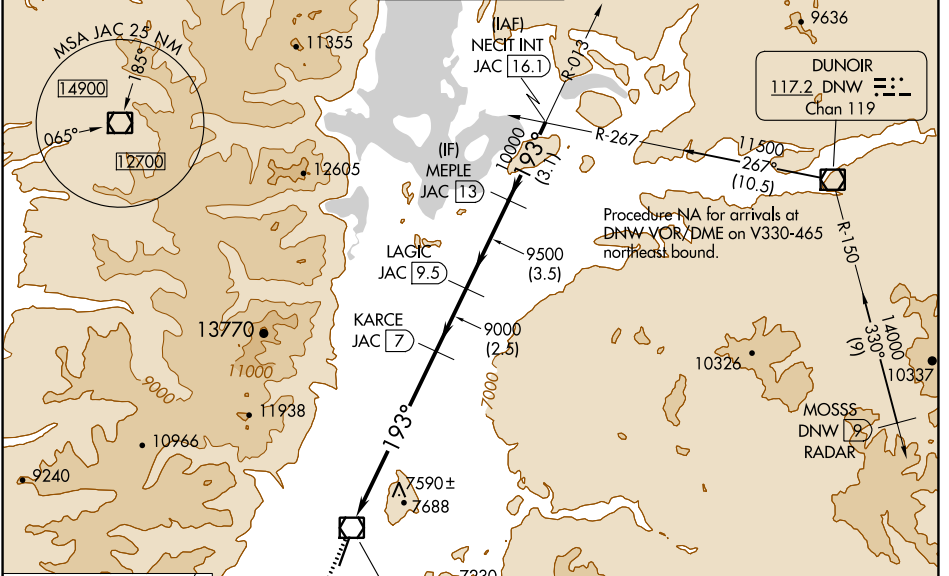
JACKSON HOLE (JAC)

DME required. RADAR required for procedure entry at MOSS.

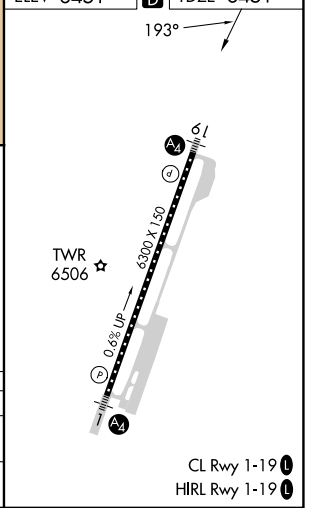
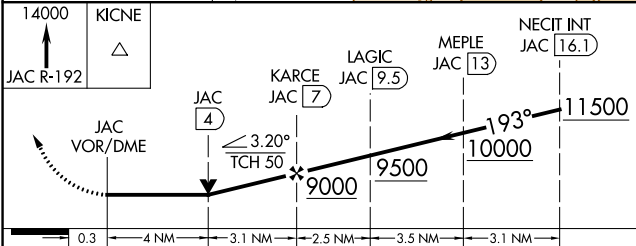
⚠ Circling NA east of Rwy 1-19. Rwy 19 helicopter visibility reduction below RVR 4000 NA. Circling NA for Cat D.
❄ -22°C Inop table does not apply to S-19 Cat C/D.

MALS MISSED APPROACH: Climb to 14000 on JAC VOR/DME R-192 to KICNE INT/26.6 DME and hold, continue climb-in-hold to 14000.

D-ATIS	SALT LAKE CENTER	JACKSON TOWER*	GND CON	UNICOM
120.625	133.25 285.6	118.075 (CTAF)	124.55	122.95



ELEV 6451	D TDZE 6451
-----------	--------------------



CATEGORY	A	B	C	D
S-19	7900/55 1449 (1500-1)	7900-1¼ 1449 (1500-1¼)	7900-3 1449 (1500-3)	
C CIRCLING	7900-1¼ 1449 (1500-1¼)	7900-1½ 1449 (1500-1½)	7900-3 1449 (1500-3)	NA

NW-1, 18 APR 2024 to 16 MAY 2024

NW-1, 18 APR 2024 to 16 MAY 2024

CL Rwy 1-19
HIRL Rwy 1-19