

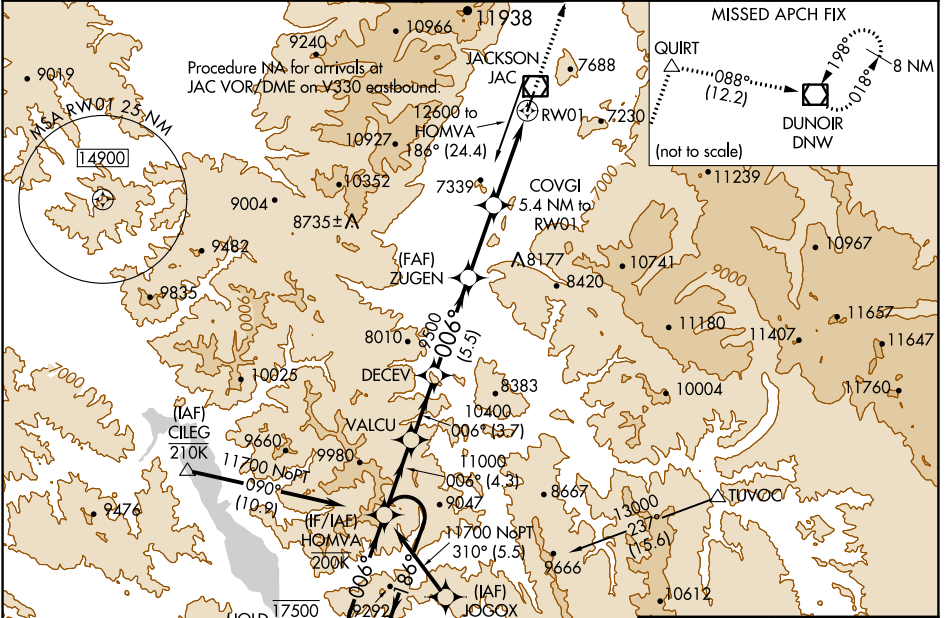
WAAS CH 58299 W01A	APP CRS 006°	Rwy Idg 6300 TDZE 6431 Apt Elev 6451
--	------------------------	---

RNAV (GPS) X RWY 1

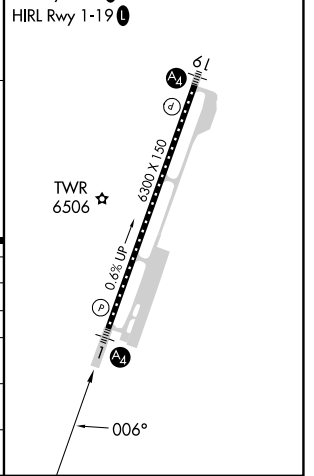
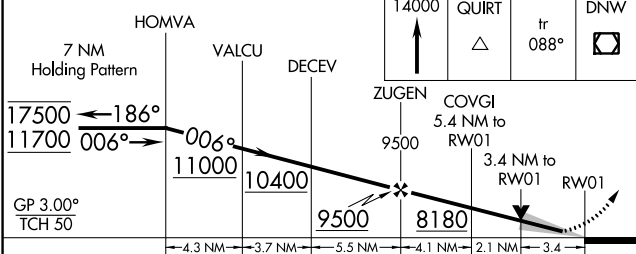
JACKSON HOLE (JAC)

RNP APCH-GPS.	MALS =	MISSED APPROACH: Climb to 14000 direct QUIRT and on track 088° to DNW VOR/DME and hold, continue climb-in-hold to 14000. *Missed approach requires minimum climb of 385 feet per NM to 7700.
<p>▼ Circling NA east of Rwy 1-19. Baro-VNAV NA.</p> <p>▲ Circling NA for Cat D. Inop table does not apply to LPV, LPV*, LNAV/VNAV, and LNAV Cat C/D.</p> <p>☁ -22°C</p>	<p>④</p>	

D-ATIS 120.625	SALT LAKE CENTER 133.25 285.6	JACKSON TOWER* 118.075 (CTAF) ①	GND CON 124.55	UNICOM 122.95
--------------------------	---	---	--------------------------	-------------------------



ELEV 6451	① TDZE 6431
CL Rwy 1-19 ①	HIRL Rwy 1-19 ①



CATEGORY	A	B	C	D
LPV DA*		6651/40	220 (200-¾)	
LPV DA		7445-4	1014 (1000-4)	
LNAV/VNAV DA		7327-4	896 (900-4)	
LNAV MDA	7540/55 1109 (1100-1)	7540-1½ 1109 (1100-1½)	7540-3 1109 (1100-3)	
④ CIRCLING	7540-1½ 1089 (1100-1½)	7540-1½ 1089 (1100-1½)	7560-3 1109 (1200-3)	NA

NW-1, 18 APR 2024 to 16 MAY 2024

NW-1, 18 APR 2024 to 16 MAY 2024