

APP CRS	Rwy Idg	6300
006°	TDZE	6431
	Apt Elev	6451

RNAV (RNP) Z RWY 1

JACKSON HOLE (JAC)

RNP AR APCH

▼ For uncompensated Baro-VNAV systems, procedure NA below -22°C or above 54°C.
☼ -22°C
 Inop table does not apply to RNP 0.11* all Cats visibility.
 For inop ALS, increase RNP 0.30* all Cats visibility to 7/8 SM.
 Missed approach requires RNP less than 1.0.

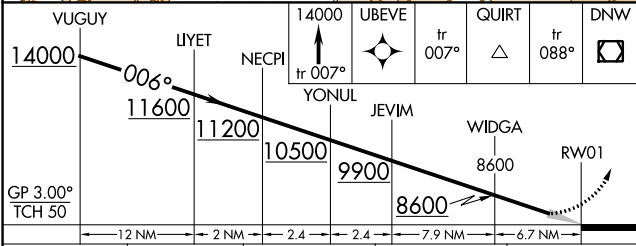
MALS
▲
MISSED APPROACH: Climb to 14000 on track 007° to UBEVE and track 007° to QUIRT and track 088° to DNW VOR/DME and hold, continue climb-in-hold to 14000.
 * Missed approach requires minimum climb of 330 feet per NM to 8200; if unable to meet climb gradient, see RNAV (RNP) Y RWY 1.

D-ATIS 120.625	SALT LAKE CENTER 133.25 285.6	JACKSON TOWER* 118.075 (CTAF)	GND CON 124.55	UNICOM 122.95
--------------------------	---	--	--------------------------	-------------------------

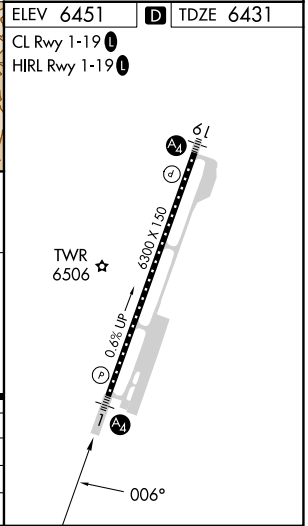


ELEV 6451	D TDZE 6431
CL Rwy 1-19 1	
HIRL Rwy 1-19 1	

Procedure NA for arrivals at OLNUE on V465 southwest bound.
 SEE INSET FOR ROUTING TO VUGUY



CATEGORY	A	B	C	D
RNP 0.11 DA*		6690-3/4	259 (300-3/4)	
RNP 0.30 DA*		6743-3/4	312 (300-3/4)	



AUTHORIZATION REQUIRED

NW-1, 18 APR 2024 to 16 MAY 2024

NW-1, 18 APR 2024 to 16 MAY 2024