

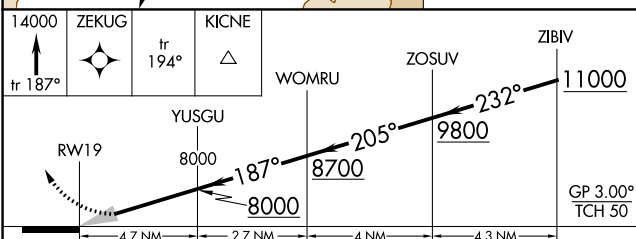
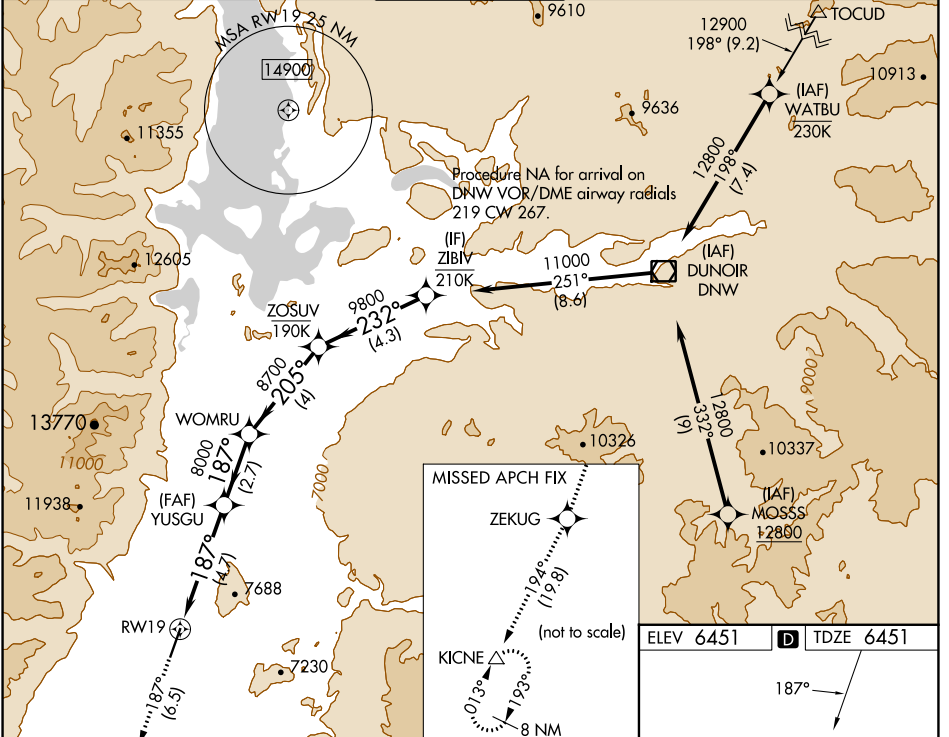
APP CRS	Rwy Idg	6300
187°	TDZE	6451
	Apt Elev	6451

RNAV (RNP) Y RWY 19

JACKSON HOLE (JAC)

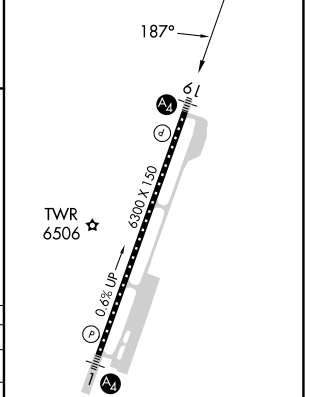
RNP AR APCH-GPS.	MALS	MISSED APPROACH: Climb to 14000 on track 187° to ZEKUG and on track 194° to KICNE and hold, continue climb-in-hold to 14000. *Missed approach requires minimum climb of 226 feet per NM to 11400. #Missed approach requires minimum climb of 210 feet per NM to 11600.
▼ For uncompensated Baro-VNAV systems, procedure NA below -27°C or above 54°C. For inop ALS, increase RNP 0.30 all Cats visibility to 1 3/8 SM.	☯	

D-ATIS	SALT LAKE CENTER	JACKSON TOWER*	GND CON	UNICOM
120.625	133.25 285.6	118.075 (CTAF) 0	124.55	122.95



CATEGORY	A	B	C	D
RNP 0.11 DA*		6781/40	330 (400-3/4)	
RNP 0.30 DA#		6935/60	484 (500-1 1/4)	
RNP 0.30 DA		7038-1 3/8	587 (600-1 3/8)	

ELEV 6451	D TDZE 6451
-----------	--------------------



CL Rwy 1-19 **0**
HIRL Rwy 1-19 **0**

AUTHORIZATION REQUIRED

NW-1, 18 APR 2024 to 16 MAY 2024

NW-1, 18 APR 2024 to 16 MAY 2024