

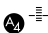
APP CRS Rwy Idg **6300**
 006° TDZE **6431**
 Apt Elev **6451**

RNAV (RNP) Y RWY 1

JACKSON HOLE (JAC)

RNP AR APCH.

Inop table does not apply.
 For uncompensated Baro-VNAV systems, procedure NA below -27°C or above 54°C.

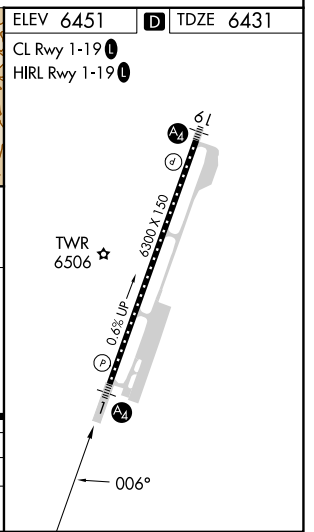
MALS 

MISSED APPROACH: Climb to 14000 on track 007° to QUIRT and track 088° to DNW VOR/DME and hold, continue climb-in-hold to 14000.

D-ATIS 120.625	SALT LAKE CENTER 133.25 285.6	JACKSON TOWER* 118.075 (CTAF) 1	GND CON 124.55	UNICOM 122.95
--------------------------	---	---	--------------------------	-------------------------



VUGUY	LIYET	NECPI	YONUL	JEVIM	WIDGA	RW01
14000	11600	11200	10500	9900	8600	
GP 3.00° TCH 50						
12 NM	2 NM	2.4 NM	2.4 NM	7.9 NM	6.7 NM	
CATEGORY	A	B	C	D		
RNP 0.30 DA	7373-4			942 (1000-4)		



NW-1, 18 APR 2024 to 16 MAY 2024

NW-1, 18 APR 2024 to 16 MAY 2024