

APP CRS	Rwy Idg	<b>6300</b>
<b>190°</b>	TDZE	<b>6451</b>
	Apt Elev	<b>6451</b>

# RNAV (RNP) X RWY 19

## JACKSON HOLE (JAC)

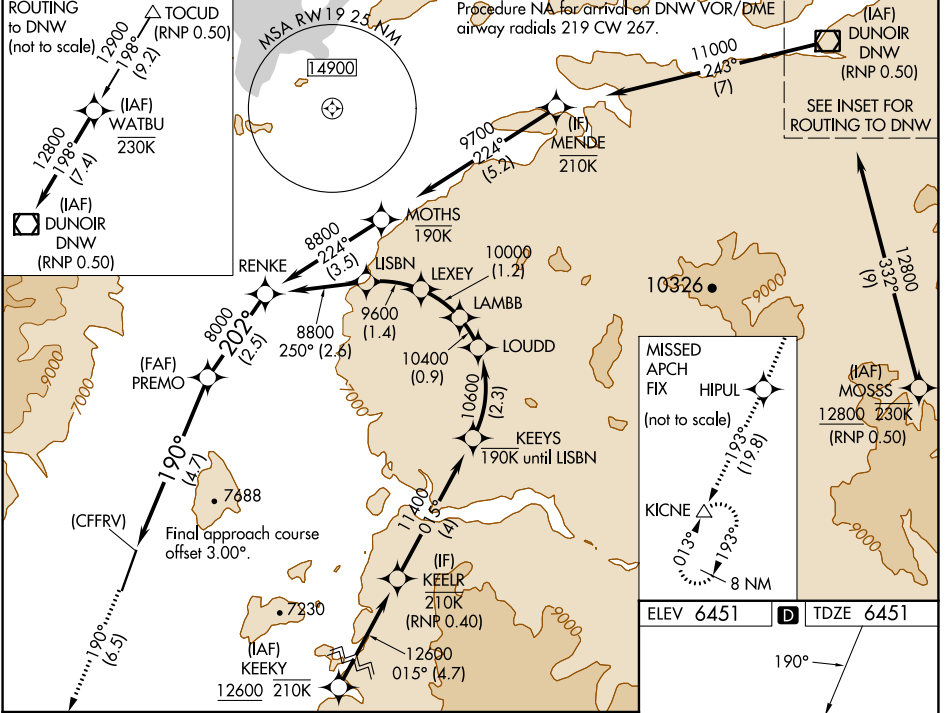
RNP AR APCH-GPS

For uncompensated Baro-VNAV systems, procedure NA below -27°C or above 54°C. For inop ALS, increase RNP 0.20# all Cats visibility to RVR 6000. For inop ALS, increase RNP 0.30 all Cats visibility to 1½ SM.

MALS

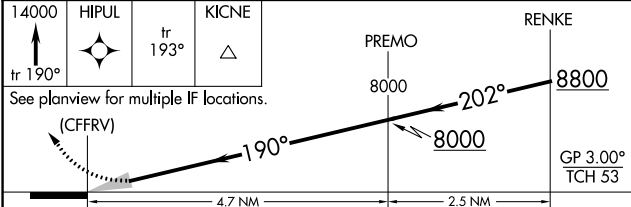
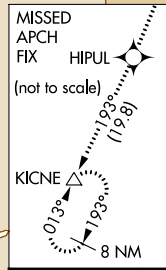
MISSED APPROACH: Climb to 14000 on track 190° to HIPUL and on track 193° to KICNE and hold, continue climb-in-hold to 14000. \*Missed approach requires minimum climb of 226 feet per NM to 11600. #Missed approach requires minimum climb of 215 feet per NM to 11600.

D-ATIS	SALT LAKE CENTER	JACKSON TOWER*	GND CON	UNICOM
<b>120.625</b>	<b>133.25 285.6</b>	<b>118.075 (CTAF)</b>	<b>124.55</b>	<b>122.95</b>

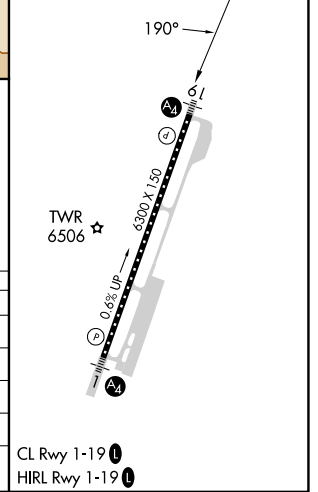


NW-1, 18 APR 2024 to 16 MAY 2024

NW-1, 18 APR 2024 to 16 MAY 2024



ELEV 6451	TDZE 6451
-----------	-----------



CATEGORY	A	B	C	D
RNP 0.10 DA*		6777/40	326 (400-¾)	
RNP 0.20 DA#		6856/50	405 (500-1)	
RNP 0.30 DA#		6938/60	487 (500-1½)	
RNP 0.30 DA		7045-1½	594 (600-1½)	

### AUTHORIZATION REQUIRED

CL Rwy 1-19  
HIRL Rwy 1-19