

ILS Z or LOC Z RWY 19 JACKSON HOLE (JAC)

LOC/DME I-JAC 109.1 Chan 28	APP CRS 187°	Rwy Idg 6300 TDZE 6451 Apt Elev 6451
--	------------------------	--

DME required for LOC only. RNAV 1-GPS required. RADAR required for procedure entry at MOSS.

▼ Circling NA for Cats A, B, and C east of Rwy 1-19. Inop table does not apply to S-ILS 19*. Circling NA for Cat D. For inop ALS increase S-LOC 19# Cats C and D visibility to RVR 4500.

▲ -22°C

MALS

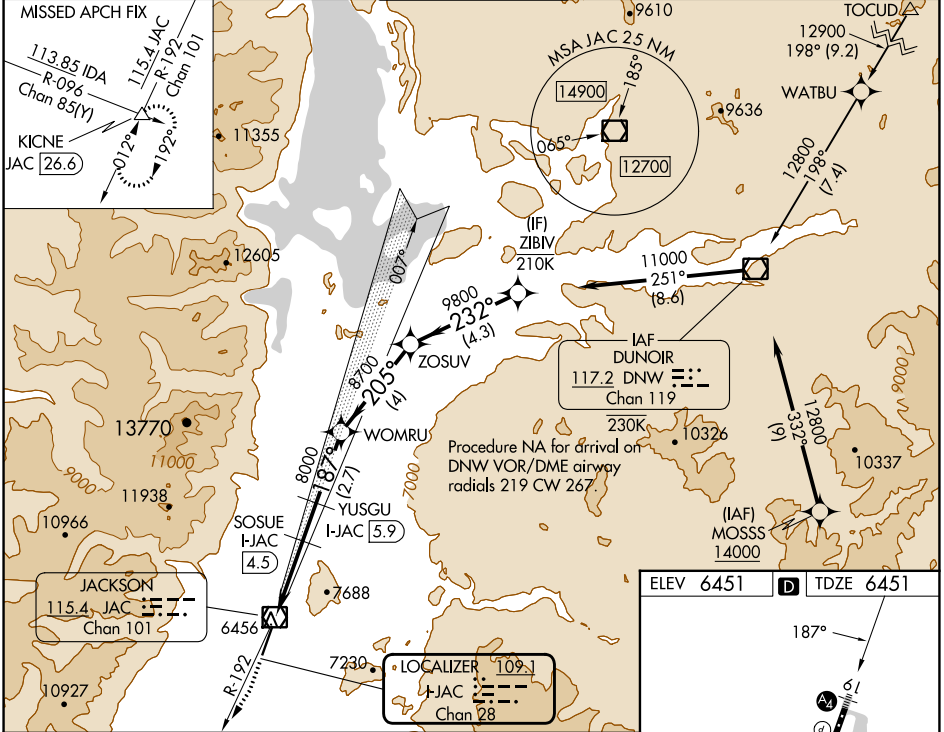


MISSED APPROACH: Climb to 6900 then climbing right turn to 14000 on JAC VOR/DME R-192 to KICNE INT/JAC 26.6 DME and hold, continue climb-in-hold to 14000.

*Missed approach requires minimum climb of 225 feet per NM to 9400; if unable to meet gradient, see ILS Y or LOC Y RWY 19.

#Missed approach requires minimum climb of 234 feet per NM to 9600; if unable to meet gradient, see ILS Y or LOC Y RWY 19.

D-ATIS 120.625	SALT LAKE CENTER 133.25 285.6	JACKSON TOWER* 118.075 (CTAF)	GND CON 124.55	UNICOM 122.95
--------------------------	---	---	--------------------------	-------------------------



NW-1, 18 APR 2024 to 16 MAY 2024

NW-1, 18 APR 2024 to 16 MAY 2024

6900 14000 KICNE	VGSI and ILS glidepath not coincident (VGSI Angle 3.00/TCH 53).			
JAC R-192	ZOSUV	ZIBIV		
I-JAC 1.2	I-JAC 1.9	SOSUE I-JAC 4.5	8000	11000
0.7	2.6 NM	1.4 NM	2.7 NM	4 NM
CATEGORY	A	B	C	D
S-ILS 19*	6651/40 200 (200-¾)			
S-LOC 19#	6720/40 269 (300-¾)			
CIRCLING	6840-1 389 (400-1)	6960-1 509 (600-1)	7440-3 989 (1000-3)	NA