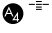


LOC/DME I-JAC <b>109.1</b> Chan 28	APP CRS <b>187°</b>	Rwy Idg TDZE Apt Elev <b>6300</b> <b>6451</b> <b>6451</b>
--	------------------------	--



# ILS Y or LOC Y RWY 19

JACKSON HOLE (JAC)

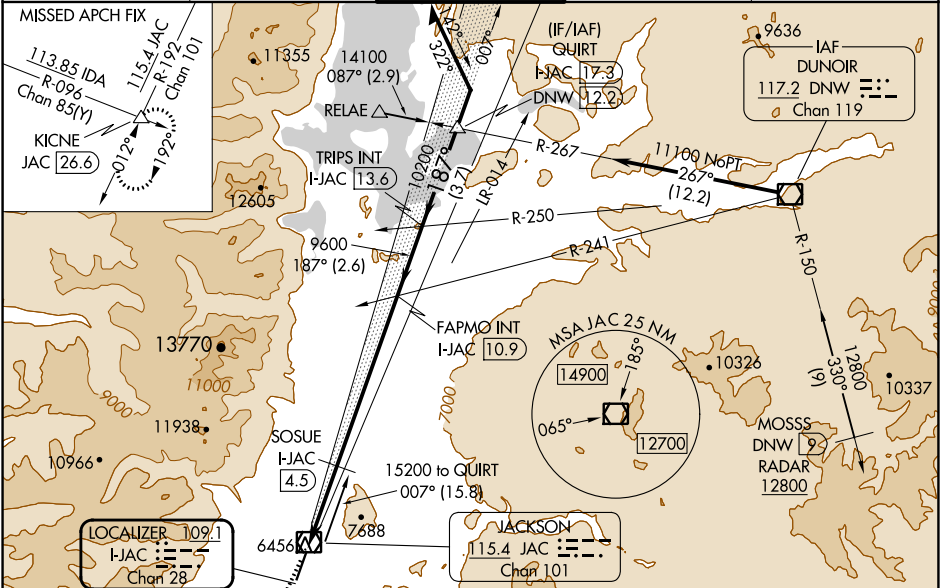
**RADAR** required for procedure entry at MOSSS.

**MALS** 


MISSED APPROACH: Climb to 14000 on JAC VOR/DME R-192 to KICNE INT/JAC VOR/DME 26.6 DME and hold, continue climb-in-hold to 14000.


**Warnings:**  
 Circling NA for Cats A, B and C east of Rwy 1-19. Circling NA for Cat D. For inop ALS, increase SOSUE fix minimums S-LOC 19 Cats C and D visibility to 2½ SM. For inop ALS, increase S-LOC Cat C and D visibility to 3 SM.  
 -22°C

D-ATIS <b>120.625</b>	SALT LAKE CENTER <b>133.25 285.6</b>	<b>JACKSON TOWER*</b> <b>118.075 (CTAF)</b> 	GND CON <b>124.55</b>	UNICOM <b>122.95</b>
--------------------------	---	--	--------------------------	-------------------------



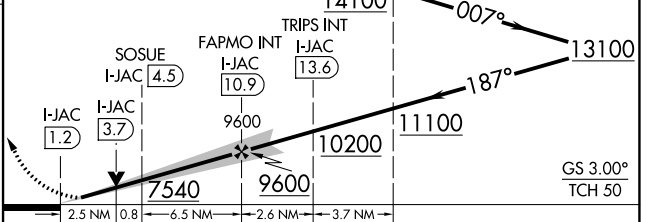
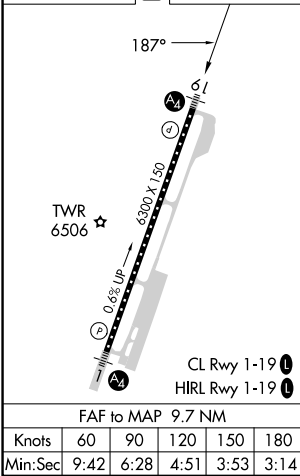
ELEV 6451 **D** TDZE 6451

14000 KICNE  Use I-JAC DME when on the localizer course.

JAC R-192 

QUIRT I-JAC 17.3 DME 12.2

Remain within 10 NM



CATEGORY	A	B	C	D
S-ILS 19	7077-1½ 626 (700-1½)			
S-LOC 19	7540/55 1089 (1100-1)	7540-1¼ 1089 (1100-1¼)	7540-2½ 1089 (1100-2½)	1089 (1100-2½)
<b>C</b> CIRCLING	7540-1¼ 1089 (1100-1¼)	7540-1½ 1089 (1100-1½)	7540-3 1089 (1100-3)	NA
SOSUE FIX MINIMUMS (DME REQUIRED)				
S-LOC 19	7300/40 849 (900-¾)	7300/55 849 (900-1)	7300-2 849 (900-2)	849 (900-2)
<b>C</b> CIRCLING	7300-1¼ 849 (900-1¼)	849 (900-1¼)	7400-2¾ 949 (1000-2¾)	NA

NW-1, 18 APR 2024 to 16 MAY 2024

NW-1, 18 APR 2024 to 16 MAY 2024