

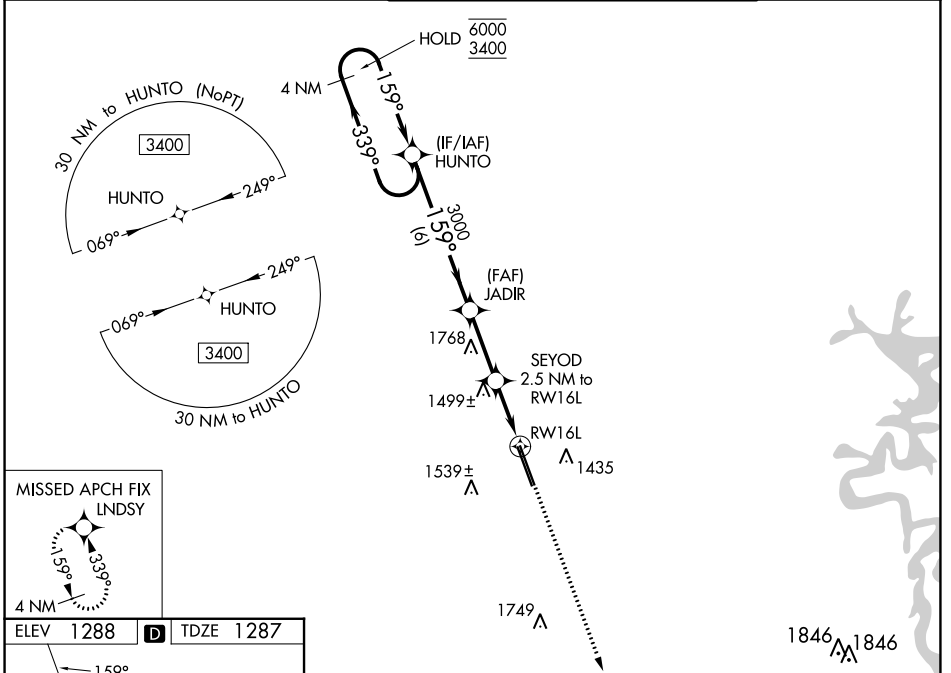
WAAS CH 56246 W16A	APP CRS 159°	Rwy Idg TDZE Apt Elev	8800 1287 1288
--	------------------------	-----------------------------	---

RNAV (GPS) RWY 16L

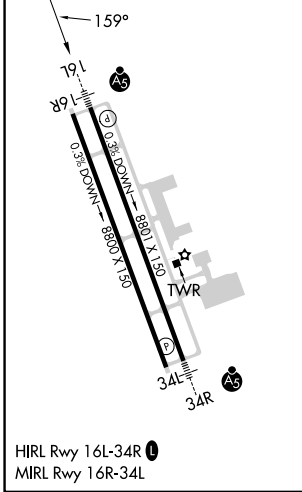
NORTHWEST ARKANSAS NTL (X.N.A)

RNP APCH - GPS.	MALSR	MISSED APPROACH: Climb to 3400 direct LND SY and hold.
<p>▼ For uncompensated Baro-VNAV systems, LNAV/VNAV NA below -15°C or above 54°C. For inop ALS, increase LPV Cat E visibility to RVR 4000, LNAV/VNAV Cat E visibility to 1¼ SM and LNAV Cats C, D, and E visibility to 1½ SM. *RVR 1800 authorized with use of FD or AP or HUD to DA.</p>		

ATIS 119.425	RAZORBACK APP CON * 121.0 244.575	NORTHWEST ARKANSAS NTL TOWER * 127.1 (CTAF)	GND CON 121.9
------------------------	---	---	-------------------------



ELEV 1288	D	TDZE 1287
-----------	----------	-----------



4 NM Holding Pattern		VGSi and RNAV glidepath not coincident (VGSi Angle 3.00/TCH 52).		3400	LND SY
<p>6000 ← 339°</p> <p>3400 → 159°</p>		<p>HUNTO</p> <p>JADIR 3000</p> <p>SEYOD 2.5 NM to RWY 16L</p> <p>2140</p> <p>1.3 NM to RWY 16L</p> <p>RWY 16L</p>		↑	
GP 3.00° TCH 57		6 NM	2.7 NM	1.2	1.3
CATEGORY	A	B	C	D	E
LPV DA*	1487/24		200 (200-½)		
LNAV/VNAV DA	1710/40		423 (500-¾)		
LNAV MDA	1760/24	473 (500-½)		1760/50 473 (500-1)	
CIRCLING	1760-1	472 (500-1)	2040-2¼ 752 (800-2¼)	2080-2½ 792 (800-2½)	2080-2¾ 792 (800-2¾)

SC-1, 21 MAR 2024 to 18 APR 2024

SC-1, 21 MAR 2024 to 18 APR 2024