

DOUGLAS, WYOMING

AL-6870 (FAA)

22027

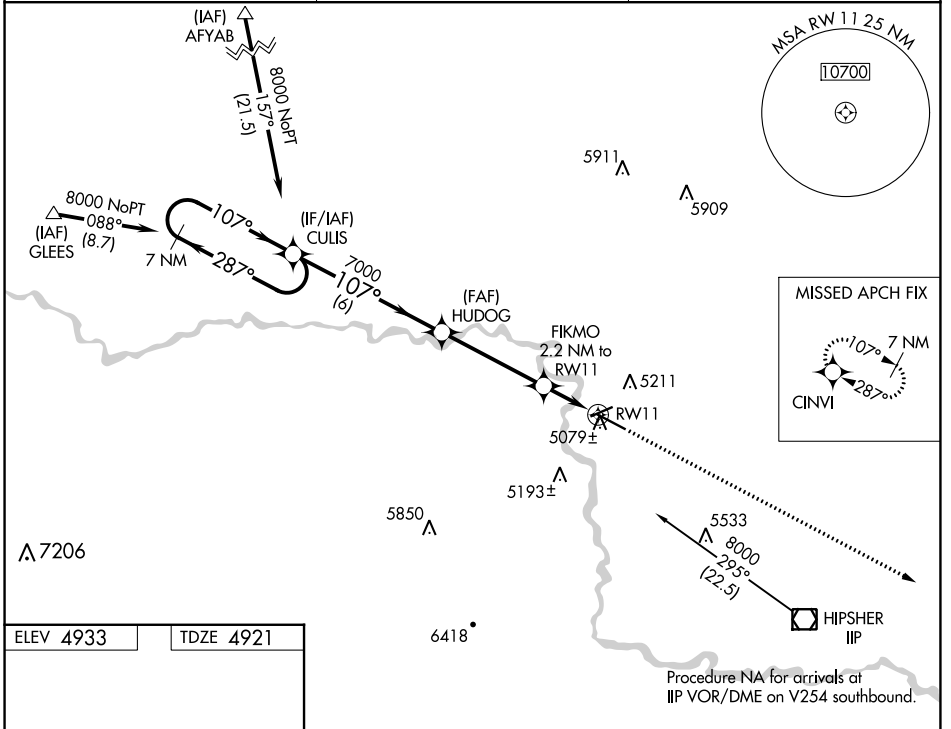
WAAS CH <b>58018</b> <b>W11A</b>	APP CRS <b>107°</b>	Rwy Idg TDZE Apt Elev <b>6534</b> <b>4921</b> <b>4933</b>
--	------------------------	--

# RNAV (GPS) RWY 11

CONVERSE COUNTY (DGW)

RNP APCH.	MISSED APPROACH: Climb to 8000 direct CINVI and hold.
For uncompensated Baro-VNAV systems, LNAV/VNAV NA below -24°C (-11°F) or above 39°C (102°F).	

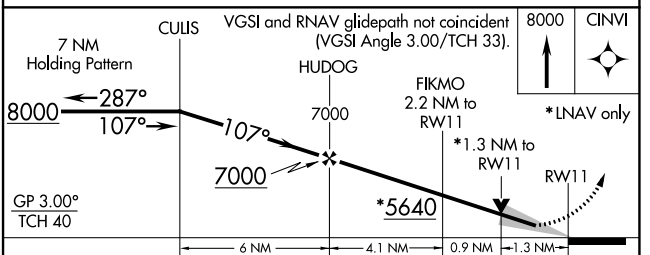
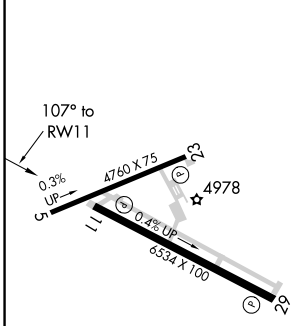
ASOS <b>135.225</b>	DENVER CENTER <b>135.6 363.025</b>	UNICOM <b>122.8 (CTAF) 0</b>
------------------------	---------------------------------------	---------------------------------



NW-1, 21 MAR 2024 to 18 APR 2024

NW-1, 21 MAR 2024 to 18 APR 2024

ELEV 4933	TDZE 4921
-----------	-----------



CATEGORY	A	B	C	D
LPV DA		5121-3/4	200 (200-3/4)	
LNAV/VNAV DA		5329-1 1/2	408 (400-1 1/2)	
LNAV MDA		5340-1 419 (500-1)	5340-1 1/4 419 (500-1 1/4)	

DOUGLAS, WYOMING  
Orig-A 07NOV19

42°48'N-105°23'W

# CONVERSE COUNTY (DGW)

# RNAV (GPS) RWY 11