

APP CRS 348°	Rwy Idg 4000
	TDZE 473
	Apt Elev 484

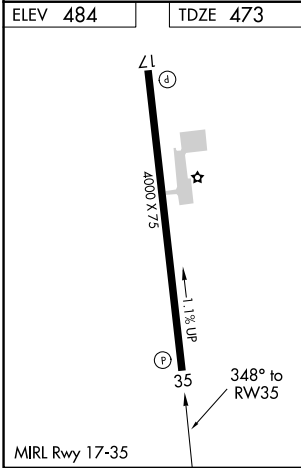
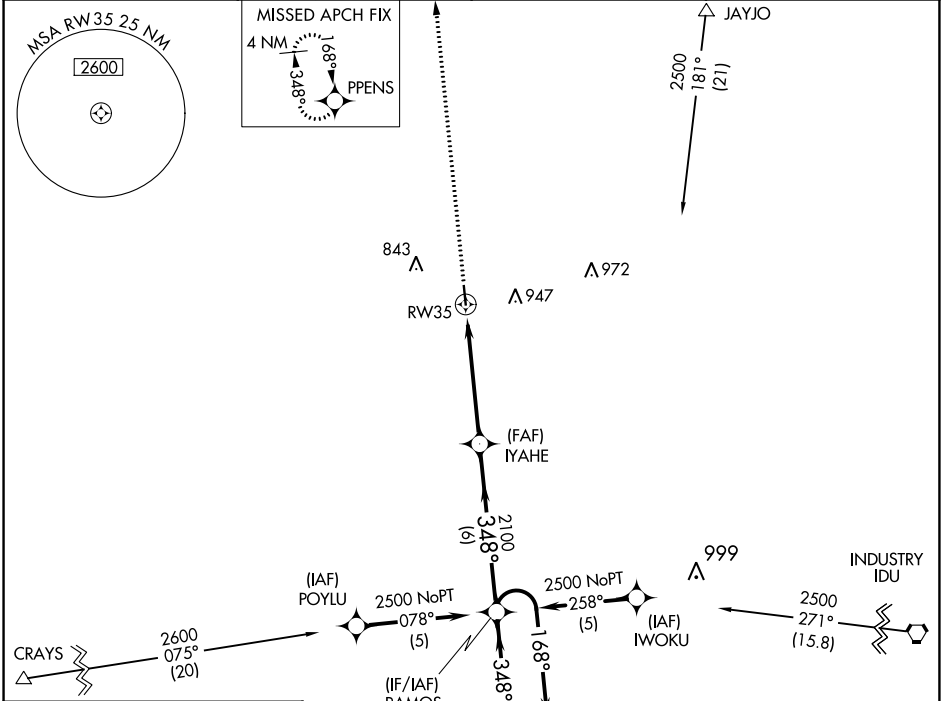
RNAV (GPS) RWY 35

GIDDINGS-LEE COUNTY (GYB)

⚠ DME/DME RNP-0.3 NA. Procedure NA at night. Helicopter visibility reduction below 1 SM NA. When local altimeter setting not received, use Austin-Bergstrom Intl altimeter setting and increase all MDA 100 feet; increase visibility Cat C ¼ SM.

⚠ MISSED APPROACH: Climb to 2500 direct PPENS and hold.

AWOS-3 119.225	AUSTIN APP CON 127.225 317.65	UNICOM 123.05 (CTAF)
--------------------------	---	--------------------------------



ELEV 484	TDZE 473
2500	PPENS
4 NM Holding Pattern	
RAMOS	
IYAHE	
RW35	
2100	
3.04° TCH 43	
5 NM	
6 NM	
2500	168°
2500	348°
348° to RW35	

CATEGORY	A	B	C	D
LNAV MDA	960-1	487 (500-1)	960-1¼ 487 (500-1¼)	NA
CIRCLING	960-1 476 (500-1)	1160-1 676 (700-1)	1240-2¼ 756 (800-2¼)	NA

SC-5, 21 MAR 2024 to 18 APR 2024

SC-5, 21 MAR 2024 to 18 APR 2024