

APP CRS <b>168°</b>	Rwy Idg <b>4000</b>
	TDZE <b>484</b>
	Apt Elev <b>484</b>

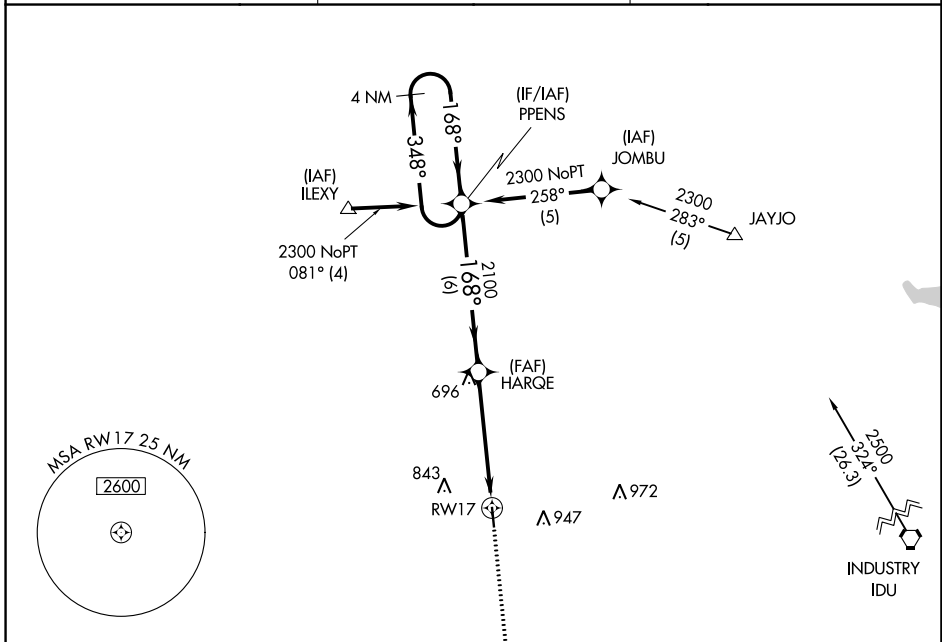
# RNAV (GPS) RWY 17

GIDDINGS-LEE COUNTY (GYB)

**⚠** DME/DME RNP-0.3 NA. Helicopter visibility reduction below 1 SM NA.  
**⚠** Procedure NA at night. When local altimeter setting not received, use Austin-Bergstrom Intl altimeter setting and increase all MDA 100 feet; increase visibility Cat C ½ SM.

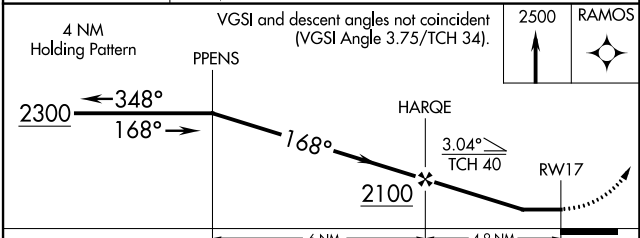
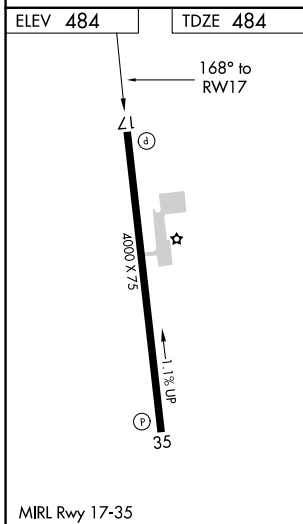
**MISSED APPROACH:**  
 Climb to 2500 direct RAMOS and hold.

<b>AWOS-3</b> <b>119.225</b>	<b>AUSTIN APP CON</b> <b>127.225 317.65</b>	<b>UNICOM</b> <b>123.05 (CTAF)</b>
---------------------------------	--	---------------------------------------



SC-5, 21 MAR 2024 to 18 APR 2024

SC-5, 21 MAR 2024 to 18 APR 2024



CATEGORY	A	B	C	D
LNAV MDA	940-1	456 (500-1)	940-1¼ 456 (500-1¼)	NA
CIRCLING	940-1 456 (500-1)	1160-1 676 (700-1)	1240-2¼ 756 (800-2¼)	NA