

WAAS CH <b>42637</b> <b>W04A</b>	APP CRS <b>038°</b>	Rwy Idg TDZE Apt Elev	<b>5004</b> <b>2387</b> <b>2396</b>
----------------------------------------	------------------------	-----------------------------	-------------------------------------------

# RNAV (GPS) RWY 4

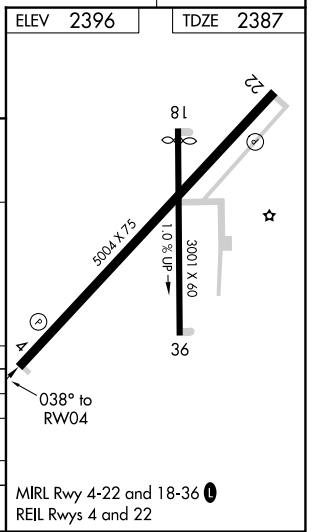
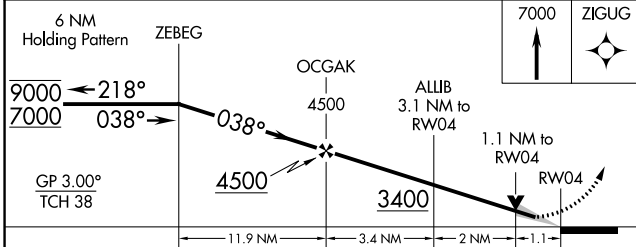
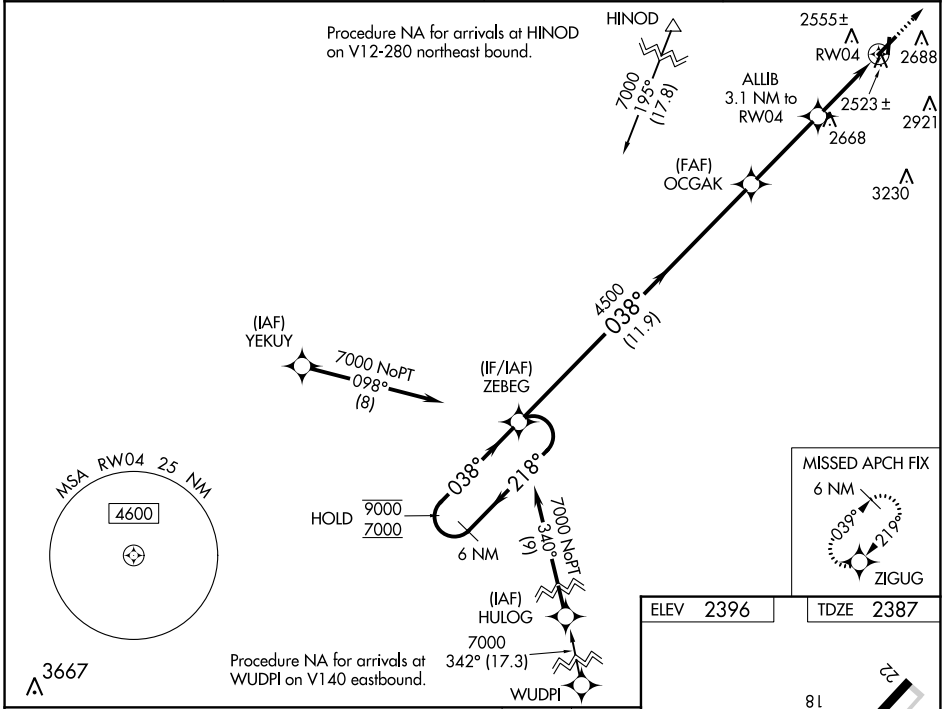
HEMPHILL COUNTY (HHF)

RNP APCH - GPS.

**⚠** Circling NA to Rws 18 and 36. For uncompensated Baro-VNAV systems, LNAV/VNAV NA below -19°C or above 54°C. When local altimeter setting not received, use Gage altimeter setting and increase LPV DA to 2751; increase LNAV/VNAV DA to 2798 feet and all visibilities ¾ SM. Increase all MDAs 120 feet and LNAV visibility Cat C/D ¼ SM, and Circling visibility Cat C ¼ SM. VDP and Baro-VNAV NA when using Gage altimeter setting.

**⚠** MISSED APPROACH: Climb to 7000 direct ZIGUG and hold, continue climb-in-hold to 7000.

AWOS-3 <b>119.025</b>	ALBUQUERQUE CENTER <b>127.85 285.475</b>	KANSAS CITY CENTER <b>126.95 379.2</b>	CTAF <b>122.9</b>
--------------------------	---------------------------------------------	-------------------------------------------	----------------------



CATEGORY	A	B	C	D
LPV DA		2637-1	250 (300-1)	
LNAV/VNAV DA		2684-1	297 (300-1)	
LNAV MDA	2780-1	393 (400-1)	2780-1½	393 (400-1½)
CIRCLING	3040-1	644 (700-1)	3280-2¾ 884 (900-2¾)	3340-3 944 (1000-3)

SC-2, 21 MAR 2024 to 18 APR 2024

SC-2, 21 MAR 2024 to 18 APR 2024