

|  |                        |                             |   |
|--|------------------------|-----------------------------|---|
| WAAS<br>CH <b>58228</b><br><b>W36A</b> | APP CRS<br><b>357°</b> | Rwy Idg<br>TDZE<br>Apt Elev | <b>4100</b><br><b>1242</b><br><b>1250</b> |
|--|------------------------|-----------------------------|---|

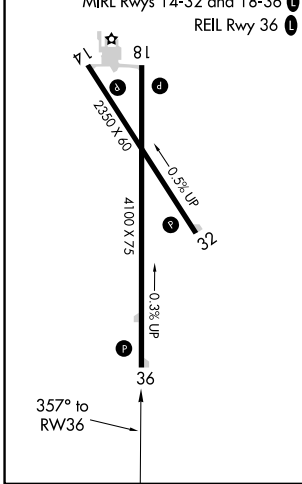
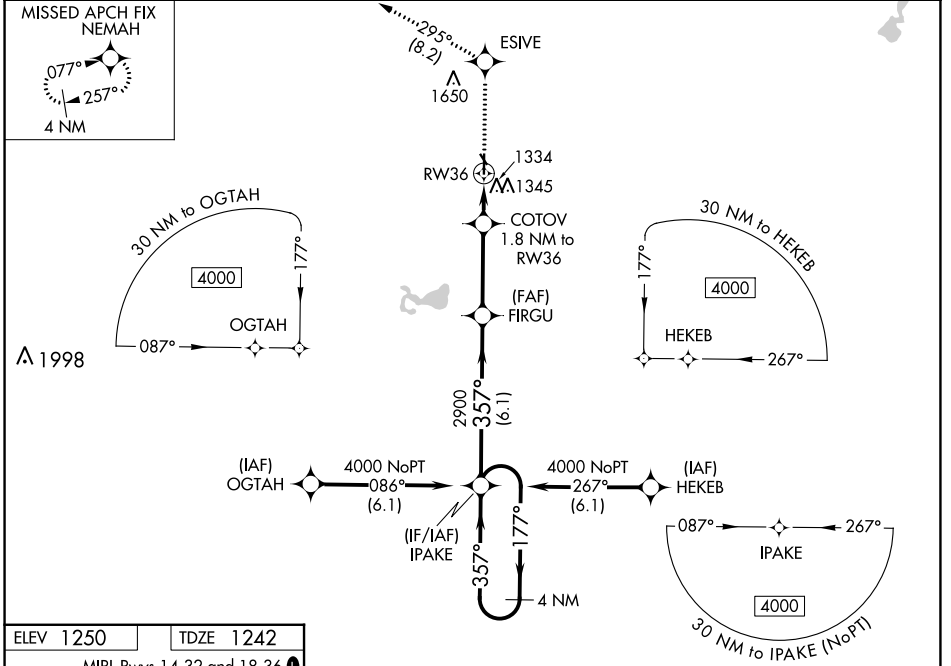
# RNAV (GPS) RWY 36

SAC CITY MUNI (SKI)

**▼** Night landing: Rwy 14 NA. Baro-VNAV NA. DME/DME RNP-0.3 NA.  
**▲** NA Use Carroll altimeter setting; when not received, use Denison altimeter setting and increase all DA 15 feet and all MDA 20 feet, increase LNAV/VNAV visibility 1/8 mile all Cats.

MISSED APPROACH: Climb to 4000 direct ESIVE and on track 295° to NEMAH and hold.

|                              |  |                                 |
|------------------------------|--|---------------------------------|
| CIN AWOS-3<br><b>118.025</b> | MINNEAPOLIS CENTER<br><b>134.0 288.3</b> | UNICOM<br><b>122.8 (CTAF) 0</b> |
|------------------------------|--|---------------------------------|



VGSi and RNAV glidepath not coincident (VGSi Angle 3.00/TCH 28).

|                      |       |      |       |         |       |
|----------------------|-------|------|-------|---------|-------|
| 4 NM Holding Pattern | IPAKE | 4000 | ESIVE | tr 295° | NEMAH |
|                      |       |      |       |         | ▲     |

4000 ← 177° → 357° →

FIRGU 2900

COTOV 1.8 NM to RW36

RW36

\*LNAV only

GP 3.00° TCH 40

2900

\*1820

6.1 NM 3.3 NM 1.8 NM

| CATEGORY     | A      | B           | C | D  |
|--------------|--------|-------------|---|----|
| LPV DA       | 1499-1 | 257 (300-1) |   | NA |
| LNAV/VNAV DA | 1549-1 | 307 (300-1) |   | NA |
| LNAV MDA     | 1660-1 | 418 (500-1) |   | NA |
| CIRCLING     | 1740-1 | 490 (500-1) |   | NA |

NC-3, 21 MAR 2024 to 18 APR 2024

NC-3, 21 MAR 2024 to 18 APR 2024