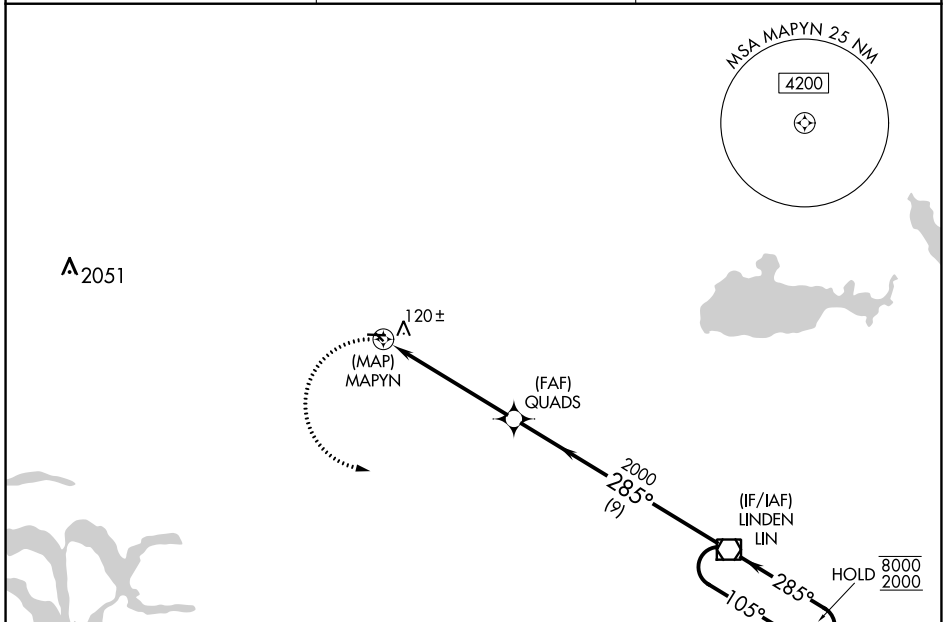


APP CRS <b>285°</b>	Rwy Idg TDZE Apt Elev	<b>N/A</b> <b>N/A</b> <b>60</b>
------------------------	-----------------------------	---------------------------------------

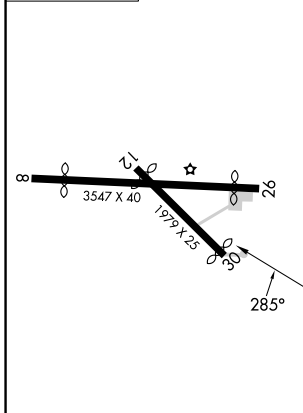
# RNAV (GPS)-B

LODI (103)

RNP APCH.		MISSED APPROACH: Climbing left turn to 2000 direct LIN VOR/DME and hold.
▼	Procedure NA at night.	
▲NA	Use Stockton altimeter setting; when not received, use Sacramento Intl altimeter setting and increase all MDA 40 feet.	
SCK ASOS <b>118.25</b>	NORCAL APP CON <b>125.1 363.2</b>	CTAF <b>122.9</b>



ELEV 60



NoPT for arrival on LIN VOR/DME airway radials 124 CW 158.

2000	LIN	QUADS	LIN VOR/DME	4 NM Holding Pattern
2000	MAPYN	285°	105°	8000
2000	285°	285°	285°	2000
5.5 NM	9 NM			
CATEGORY	A	B	C	D
☑ CIRCLING	640-1	580 (600-1)		NA

LJRL Rwy 8-26

SW-2, 21 MAR 2024 to 18 APR 2024

SW-2, 21 MAR 2024 to 18 APR 2024