

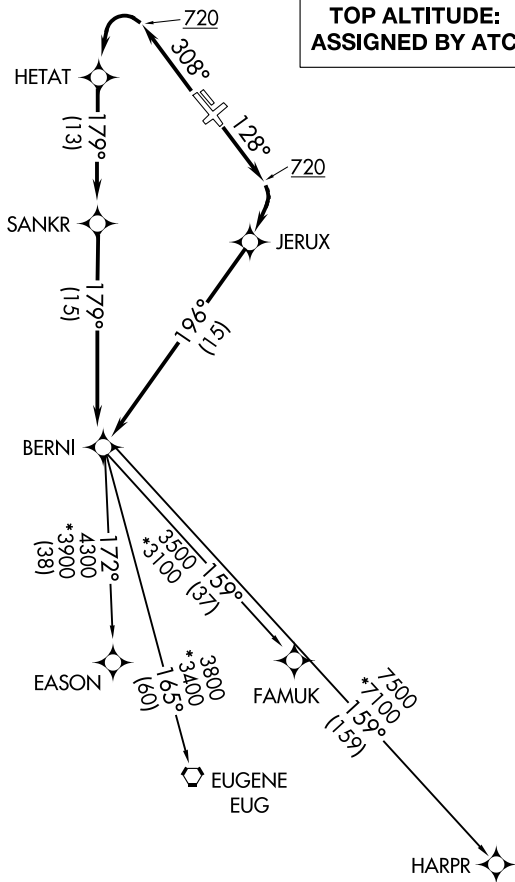
(BERNI3.BERNI) 18032

BERNI THREE DEPARTURE (RNAV) AL-5063 (FAA)

PORTLAND-HILLSBORO (HIO)
PORTLAND, OREGON

ATIS
127.65
GND CON
121.7
HILLSBORO TOWER *
119.3 (CTAF) 239.3
PORTLAND DEP CON
126.0 269.175

**TOP ALTITUDE:
ASSIGNED BY ATC**



NOTE: GPS required.
NOTE: RNAV 1.
NOTE: RADAR required.
NOTE: Turbojet aircraft only.

TAKEOFF MINIMUMS

Rwys 2, 13L, 20, 31R: NA-ATC.
Rwys 13R, 31L: Standard with minimum
climb of 500' per NM
to 720.

NOTE: Chart not to scale.

DEPARTURE ROUTE DESCRIPTION

TAKEOFF RUNWAY 13R: Climb heading 128° to 720, then climbing right turn direct JERUX, then on track 196° to BERNI, thence . . .

TAKEOFF RUNWAY 31L: Climb heading 308° to 720, then climbing left turn direct HETAT, then on track 179° to SANKR, then on track 179° to BERNI, thence . . .

. . . on (transition). Maintain assigned altitude. Expect filed altitude 10 minutes after departure.

EASON TRANSITION (BERNI3.EASON)

EUGENE TRANSITION (BERNI3.EUG)

FAMUK TRANSITION (BERNI3.FAMUK)

HARPR TRANSITION (BERNI3.HARPR)

BERNI THREE DEPARTURE (RNAV)

(BERNI3.BERNI) 01FEB18

PORTLAND, OREGON
PORTLAND-HILLSBORO (HIO)

NW-1, 21 MAR 2024 to 18 APR 2024

NW-1, 21 MAR 2024 to 18 APR 2024