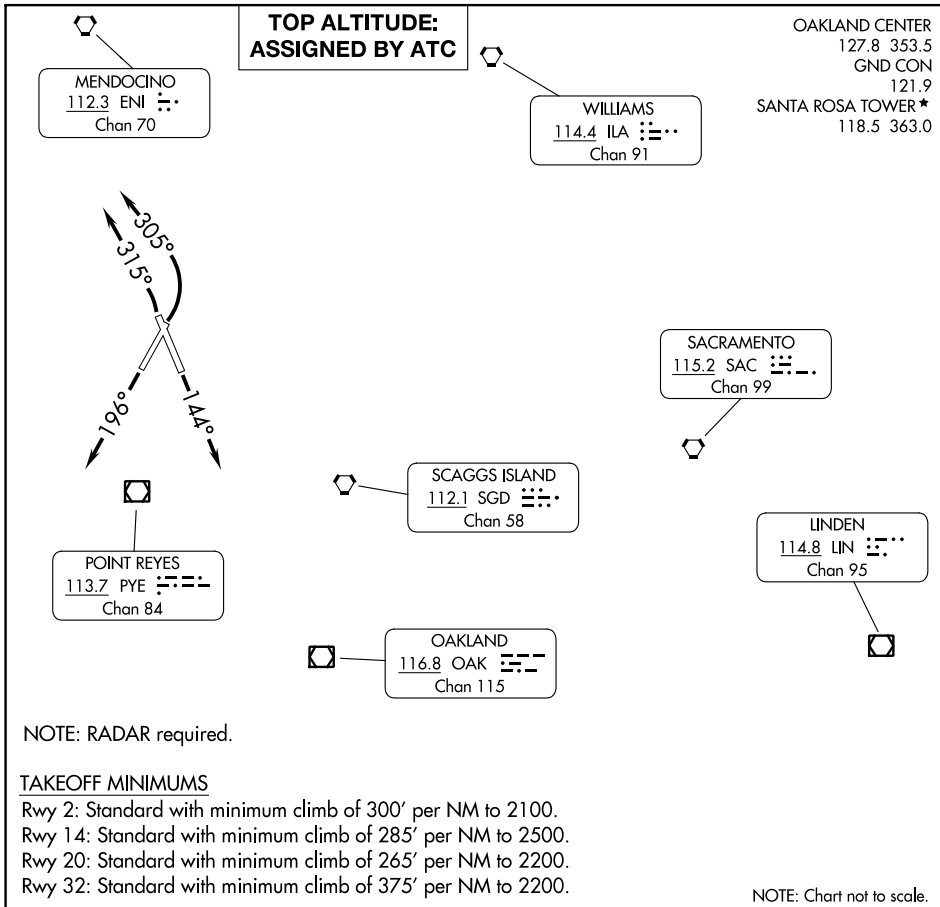


CHARLIE EIGHT DEPARTURE



SW-2, 21 MAR 2024 to 18 APR 2024

SW-2, 21 MAR 2024 to 18 APR 2024

DEPARTURE ROUTE DESCRIPTION

TAKEOFF RUNWAY 2: Climbing left turn on heading 305° (or as assigned between 200° CW to 305° from departure end of runway), thence

TAKEOFF RUNWAY 14: Climb on heading 144° (or as assigned between 110° CW to 315° from departure end of runway), thence

TAKEOFF RUNWAY 20: Climb on heading 196° (or as assigned between 100° CW to 250° from departure end of runway), thence

TAKEOFF RUNWAY 32: Climbing left turn on heading 315° (or as assigned between 145° CW to 315° from departure end of runway), thence

. . . . expect RADAR vectors to join assigned route. Maintain ATC assigned altitude; expect filed altitude/flight level ten minutes after departure.

LOST COMMUNICATIONS: If not in contact with Oakland Center after reaching 4000, proceed direct to the PYE VOR/DME. Thence via assigned route.