

APP CRS	Rwy Idg	5001
136°	TDZE	31
	Apt Elev	39

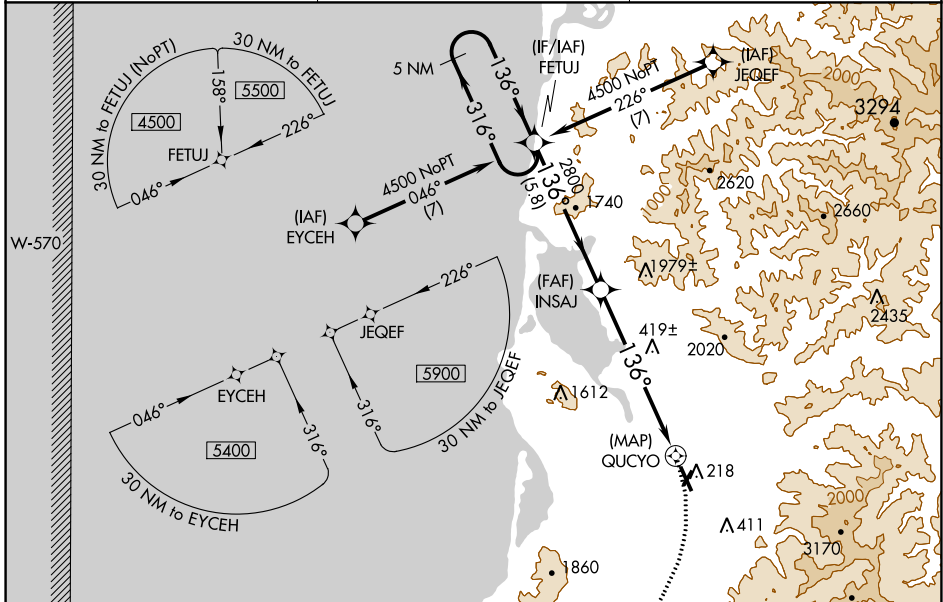
RNAV (GPS) RWY 13

TILLAMOOK (TMK)

NA DME/DME RNP-0.3 NA. When local altimeter setting not received, use Astoria Rgnl altimeter setting and increase all MDA 540 feet; increase LNAV Cat A visibility 1/4 SM, Cat B visibility 1/2 SM, and Cat C visibility 1 SM and Circling Cat B visibility 1/4 SM. Night Landing: Rwy 1, 19 NA. Helicopter visibility reduction below 3/4 SM NA.

MISSED APPROACH: Climbing right turn to 5000 direct ULKAW and hold, continue climb-in-hold to 5000.

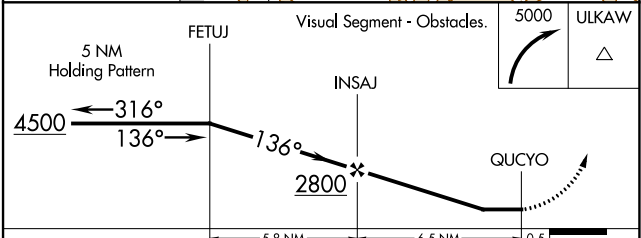
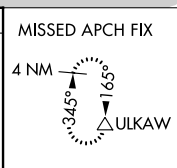
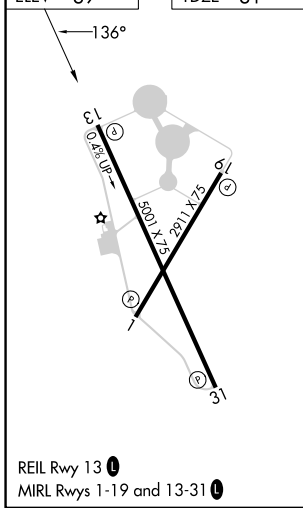
AWOS-3PT 120.0	SEATTLE CENTER 124.2 317.6	UNICOM 122.8 (CTAF) 0
--------------------------	--------------------------------------	---------------------------------



NW-1, 21 MAR 2024 to 18 APR 2024

NW-1, 21 MAR 2024 to 18 APR 2024

ELEV 39	TDZE 31
---------	---------



CATEGORY	A	B	C	D
LNAV MDA	760-1	729 (800-1)	760-2 729 (800-2)	NA
CIRCLING	880-1 1/4 841 (900-1 1/4)	920-1 1/4 881 (900-1 1/4)	1580-3 1541 (1600-3)	NA