

VORTAC SPS <b>112.7</b> Chan <b>74</b>	APCH CRS <b>260°</b>	Rwy ldg TDZE Arpt Elev <b>N/A</b> <b>N/A</b> <b>1019</b>
--	-------------------------	--

[USAF]

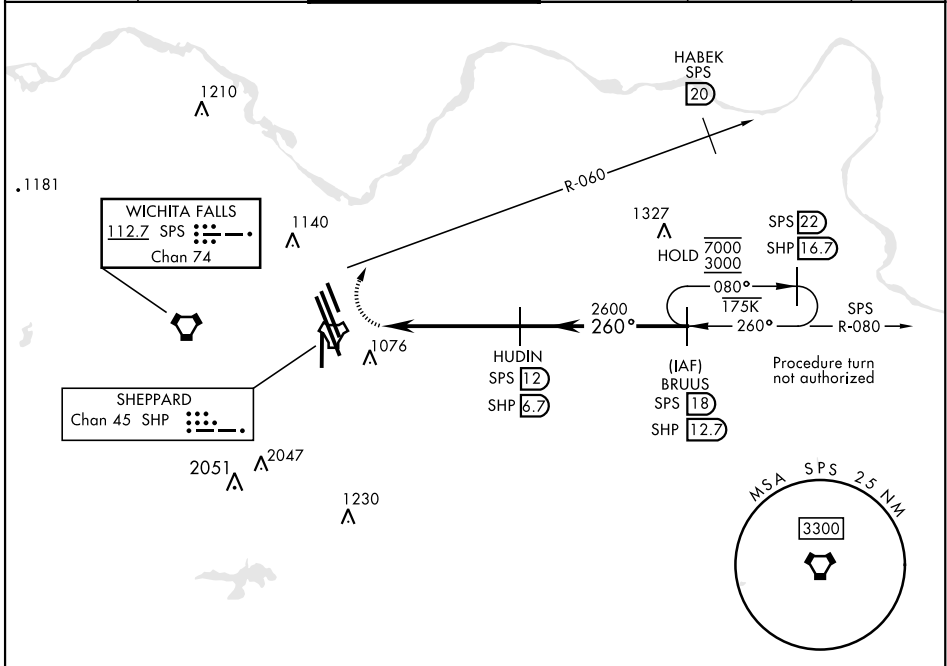
SHEPPARD AFB/WICHITA FALLS MUNI (KSPS)

RADAR required

MISSED APPROACH: Climbing right turn to 3200, intcp SPS  
VORTAC R-060 to 20 DME (HABEK). Expect RADAR vectors.

\* Circling not authorized W of Rwy 15R-33L.

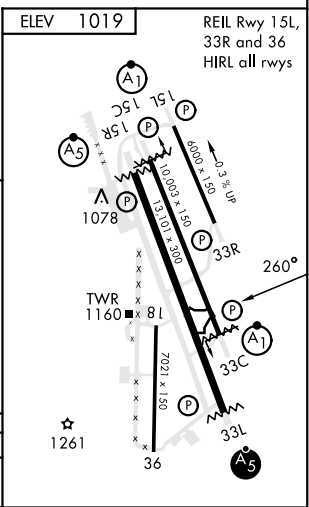
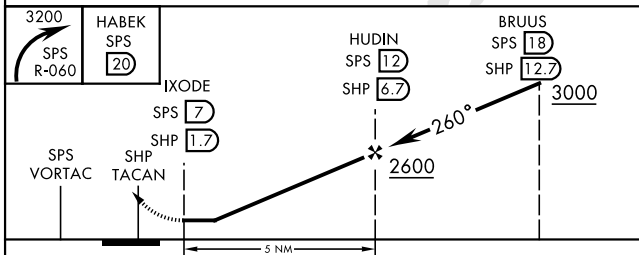
ATIS ★ <b>132.05 269.9</b>	APP CON <b>118.2 269.025</b>	TOWER ★ <b>119.75 0 279.525</b> (CTAF)	GND CON <b>125.5 289.4</b>	CLNC DEL <b>121.2 282.225</b>	ASR
-------------------------------	---------------------------------	---	-------------------------------	----------------------------------	-----



SC-2, 21 MAR 2024 to 18 APR 2024

SC-2, 21 MAR 2024 to 18 APR 2024

EMERG SAFE ALT 100 NM 4600



CATEGORY	A	B	C	D	E
CIRCLING*	1480-17/8	461	(500-17/8)	2020-3 1001(1100-3)	2080-3 1061(1100-3)