

WICHITA FALLS, TEXAS

RNAV (GPS) RWY 15R

APCH CRS 153°	Rwy ldg 13,101
	TDZE 998
	Arprt Elev 1019

AL-454 [USAF]

SHEPPARD AFB/WICHITA FALLS MUNI (KSPS)

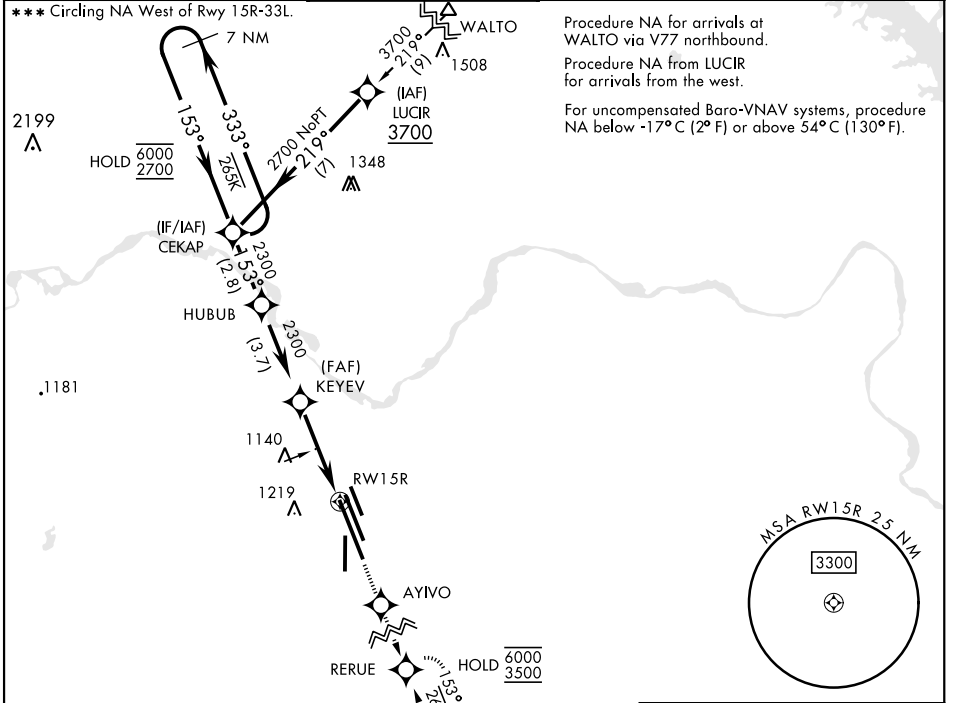
RNP APCH.



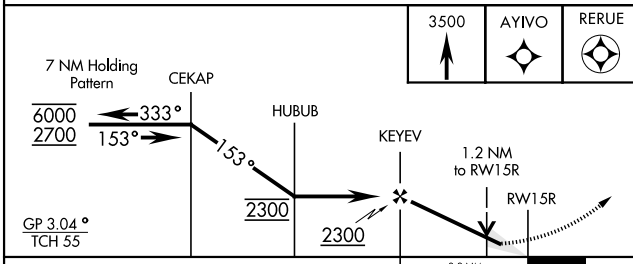
MISSED APPROACH: Climb to 3500 direct AYIVO and via 153° track to RERUE and hold.

▼ * When ALS inop, increase CAT AB vis to 3/4 mile; CAT CDE vis to 7/8 mile.
** When ALS inop, increase CAT AB vis to 1 mile; CAT CDE vis to 1 1/4 miles.

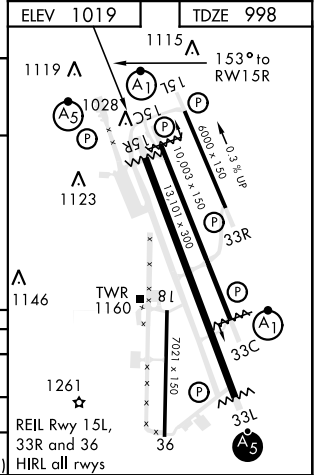
ATIS ★ 132.05 269.9	APP CON 118.2 269.025	TOWER ★ 119.75 279.525 (CTAF)	GND CON 125.5 289.4	CLNC DEL 121.2 282.225	ASR
-------------------------------	---------------------------------	---	-------------------------------	----------------------------------	-----



EMERG SAFE ALT FROM RWY 15R 100 NM 4600



CATEGORY	A	B	C	D	E
LNAV/VNAV DA*	1249-1/2 251 (300-1/2)	1252-1/2 254 (300-1/2)	1260-1/2 262 (300-1/2)	1271-1/2 273 (300-1/2)	
LNAV MDA**	1420-1/2 422 (500-1/2)		1420-3/4 422 (500-3/4)		
*** CIRCLING	1420-1 401 (500-1)	1480-1 461 (500-1)	1480-1 1/2 461 (500-1 1/2)	2020-3 1001 (1100-3)	2080-3 1061 (1100-3)



WICHITA FALLS, TEXAS

33°59'N-98°30'W

SHEPPARD AFB/WICHITA FALLS MUNI (KSPS)

Amdt 5 14JUL22

RNAV (GPS) RWY 15R

SC-2, 21 MAR 2024 to 18 APR 2024

SC-2, 21 MAR 2024 to 18 APR 2024