

# RNAV (GPS) RWY 15L

APCH CRS	Rwy ldg	6000
153°	TDZE	1019
	Arpt Elev	1019

AL-454 [USAF]

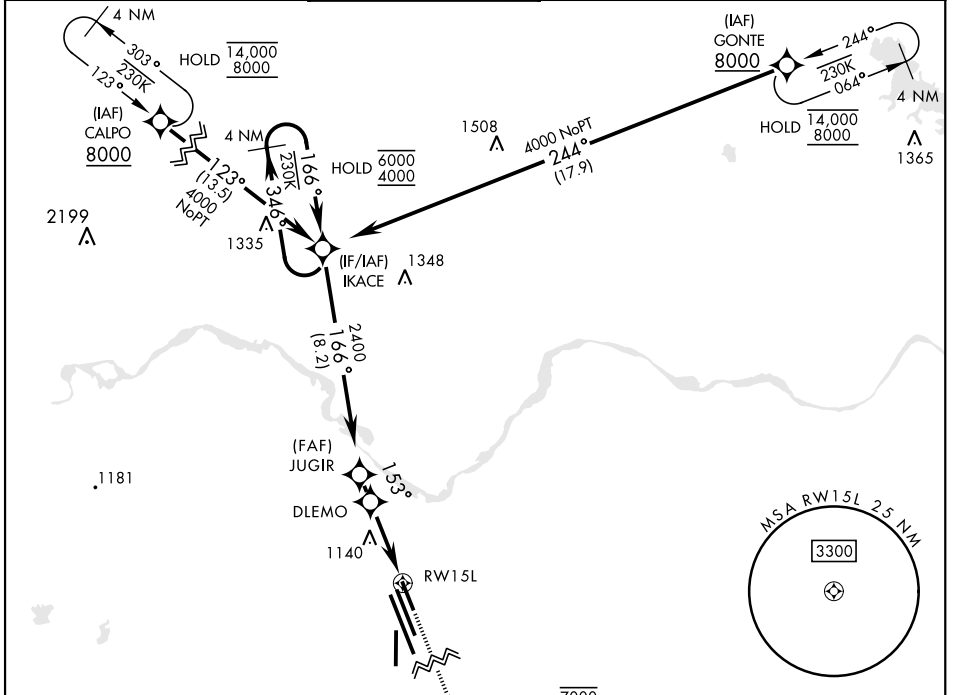
SHEPPARD AFB/WICHITA FALLS MUNI (KSPS)

RNP APCH - DME/DME RNP-0.3 NA.

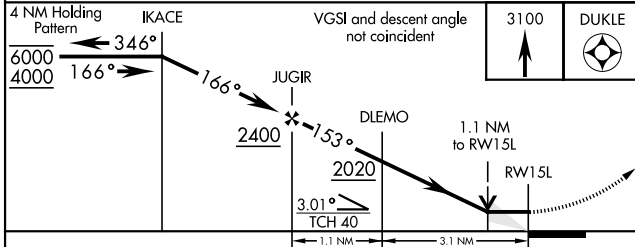
MISSED APPROACH: Climb and maintain 3100, track 153° direct DUKLE and hold.

▼ \* Circling NA West of RWY 15R/33L.

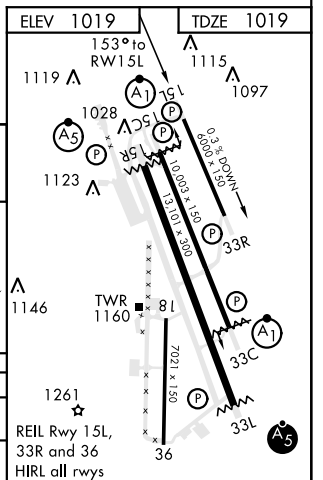
ATIS ★	APP CON	TOWER ★	GND CON	CLNC DEL	ASR
132.05 269.9	118.2 269.025	119.75 0 279.525 (CTAF)	125.5 289.4	121.2 282.225	



EMERG SAFE ALT FROM "RW15L" 100 NM 4600



CATEGORY	A	B	C	D	E
LNAV MDA	NA	1420-1 401 (500-1)	1420-1½ 401 (500-1½)		NA
CIRCLING*	NA	1480-1 461 (500-1)	1480-1½ 461 (500-1½)	2020-3 1001 (1100-3)	NA



# RNAV (GPS) RWY 15L

SC-2, 21 MAR 2024 to 18 APR 2024

SC-2, 21 MAR 2024 to 18 APR 2024