

WICHITA FALLS, TEXAS

RNAV (GPS) RWY 15C

APCH CRS 153°	Rwy Idg 10.003 TDZE 1003 Arprt Elev 1019
-------------------------	---

[USAF]

SHEPPARD AFB/WICHITA FALLS MUNI (KSPS)

RNP APCH-GPS

ALSIF-1

MISSED APPROACH: Climb to 3100 direct DILGR and hold.

▼ * When ALS inop, increase vis to 7/8 mile.
** When ALS inop, increase CAT AB vis to 1 mile, CAT CDE vis to 1 1/8 miles.

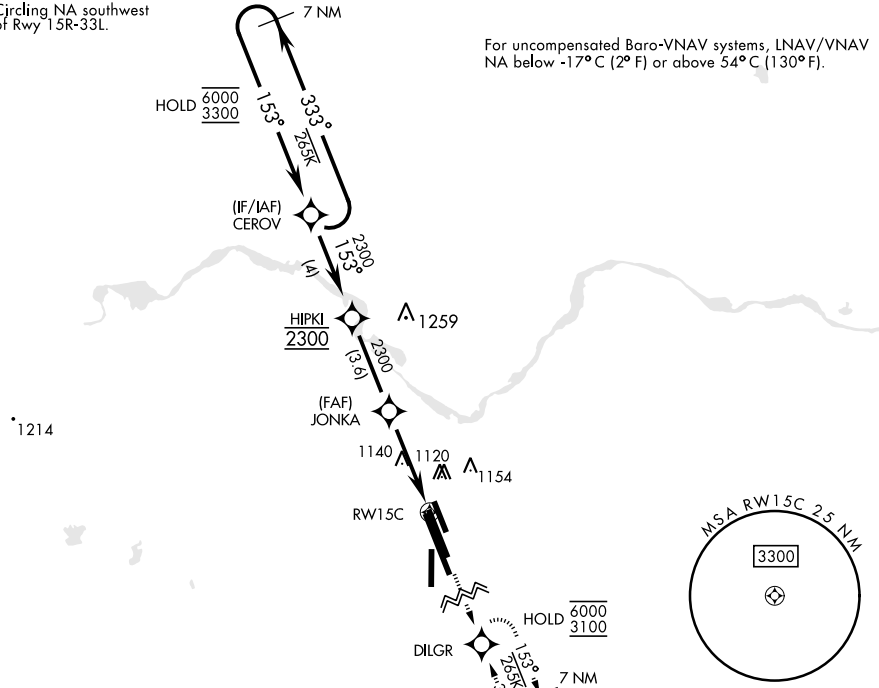
ATIS ★ 132.05 269.9	APP CON 118.2 269.025	TOWER ★ 119.75 0 279.525 (CTAF)	GND CON 125.5 289.4	CLNC DEL 121.2 282.225	ASR
-------------------------------	---------------------------------	---	-------------------------------	----------------------------------	-----

*** Circling NA southwest of Rwy 15R-33L.

For uncompensated Baro-VNAV systems, LNAV/VNAV NA below -17°C (2° F) or above 54°C (130°F).

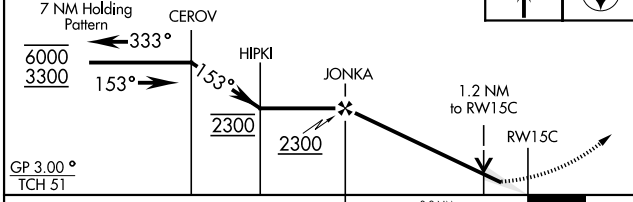
SC-2, 21 MAR 2024 to 18 APR 2024

SC-2, 21 MAR 2024 to 18 APR 2024

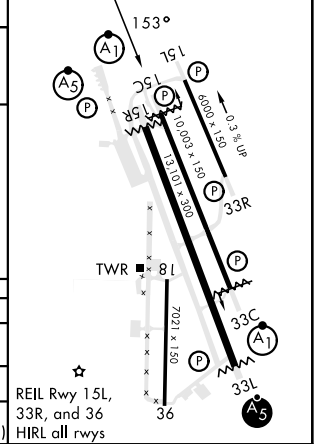


EMERG SAFE ALT 100 NM 4600

VGSI and RNAV glidepath not coincident (VGSI Angle 3.00/TCH 46).



ELEV	1019	TDZE	1003
------	------	------	------



CATEGORY	A	B	C	D	E
LNAV/VNAV DA*	1266-1/2 263 (300-1/2)	1277-1/2 274 (300-1/2)	1285-1/2 282 (300-1/2)	1296-1/2 293	(300-1/2)
LNAV MDA**	1420-1/2 401 (500-1)	417 461 (500-1)	1480-1 1/2 461 (500-1 1/2)	1420-3/4 1001 (1100-3)	417 1061 (1100-3)
CIRCLING***	401 (500-1)	461 (500-1)	461 (500-1 1/2)	1001 (1100-3)	1061 (1100-3)

WICHITA FALLS, TEXAS

33°59'N-98°30'W

SHEPPARD AFB/WICHITA FALLS MUNI (KSPS)

Amdt 2 21MAR24

RNAV (GPS) RWY 15C