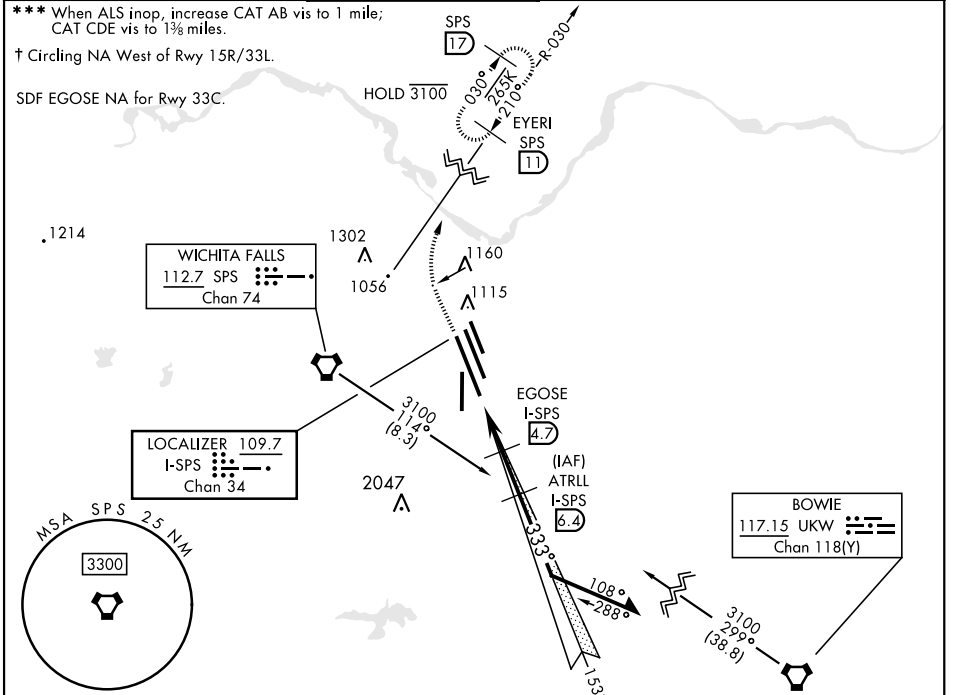


WICHITA FALLS, TEXAS

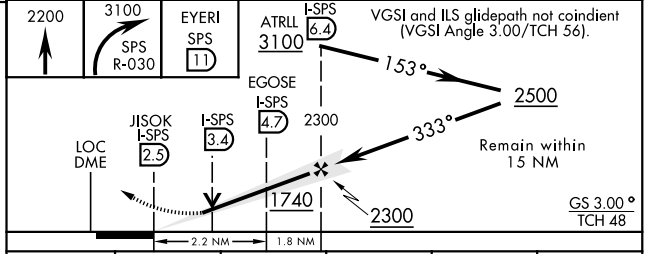
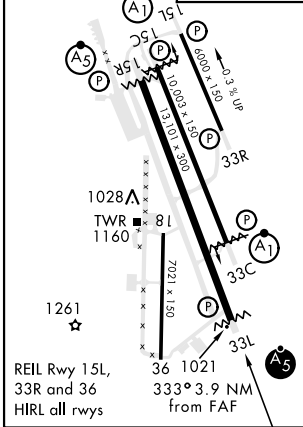
ILS or LOC/DME Y RWY 33L

LOC/DME I-SPS 109.7 Chan 34	APCH CRS 333°	Rwy ldg 33L 13,101 33C 10,003 TDZE 33L 1000 33C 989 Arprt Elev 1019	AL-454 [USAF]	SHEPPARD AFB/ WICHITA FALLS MUNI (KSPS)
* When ALS inop, increase vis to ¾ mile. ** When ALS inop, increase vis to 1 mile.		MALSR A5	ALSF-1 A1	MISSED APPROACH: Climb to 2200, then climbing right turn to 3100 via SPS VORTAC R-030 to EYERI (SPS R-030/11) and hold.

ATIS ★ 132.05 269.9	APP CON 118.2 269.025	TOWER ★ 119.75 0 279.525 (CTAF)	GND CON 125.5 289.4	CLNC DEL 121.2 282.225	ASR
-------------------------------	---------------------------------	---	-------------------------------	----------------------------------	-----



ELEV 1019	TDZE 33L 1000 TDZE 33C 989	EMERG SAFE ALT 100 NM 4600
------------------	---	-----------------------------------



CATEGORY	A	B	C	D	E
S-ILS 33L *		1200-½	200	(200-½)	
S-LOC/ ** DME 33L		1340-½	340	(400-½)	
SIDESTEP 33C ***	1440-½	451 (500-½)	1440-7/8	451 (500-7/8)	
C CIRCLING†	1440-1 421 (500-1)	1480-1 461 (500-1)	1480-1½ 461 (500-1½)	2020-3 1001(1100-3)	2080-3 1061(1100-3)

WICHITA FALLS, TEXAS 33°59'N-98°30'W SHEPPARD AFB/WICHITA FALLS MUNI (KSPS)

Amdt 7 14JUL22

ILS or LOC/DME Y RWY 33L

SC-2, 21 MAR 2024 to 18 APR 2024

SC-2, 21 MAR 2024 to 18 APR 2024