

WICHITA FALLS, TEXAS

# HI-TACAN RWY 33L

TACAN SHP Chan <b>45</b>	APCH CRS <b>334°</b>	Rwy ldg <b>13,101</b> TDZE <b>1000</b> Arpt Elev <b>1019</b>	AL-454 [USAF]	SHEPPARD AFB/WICHITA FALLS MUNI (KSPS)
--------------------------	----------------------	--	---------------	--

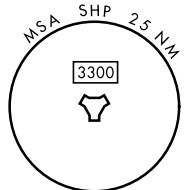
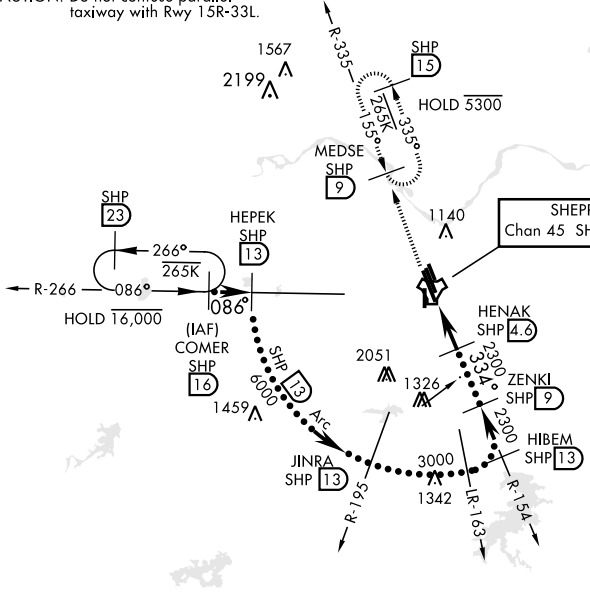
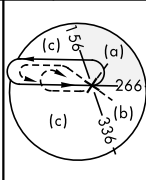
▼ \* When ALS inop, increase CAT CDE vis to 1½ miles.  
 \*\* Circling not authorized W of Rwy 15R-33L.



MISSED APPROACH: Climb and maintain 3300, intercept SHP TACAN R-335 to SHP R-335/9 DME (MEDSE) and hold.

ATIS * <b>132.05 269.9</b>	APP CON <b>118.2 269.025</b>	TOWER * <b>119.75 0 279.525</b> (CTAF)	GND CON <b>125.5 289.4</b>	CLNC DEL <b>121.2 282.225</b>	ASR
-------------------------------	---------------------------------	---	-------------------------------	----------------------------------	-----

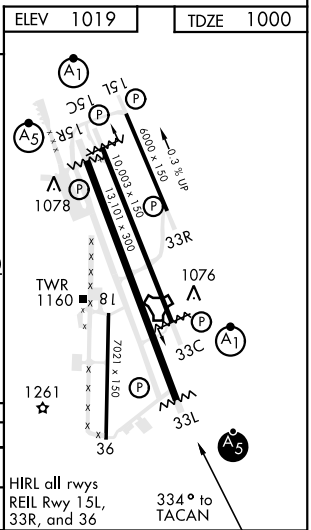
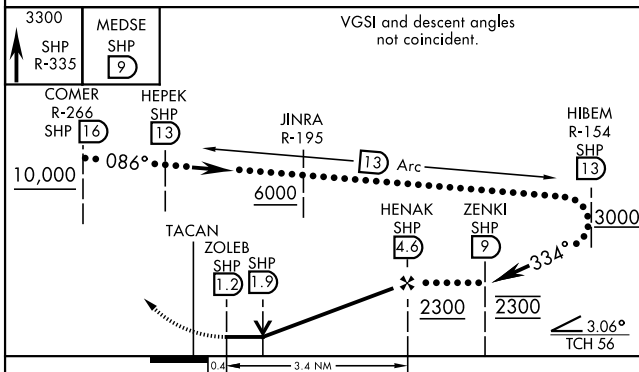
CAUTION: Do not confuse parallel taxiway with Rwy 15R-33L.



SC-2, 21 MAR 2024 to 18 APR 2024

SC-2, 21 MAR 2024 to 18 APR 2024

1407  
EMERG SAFE ALT 100 NM 4600



CATEGORY	C	D	E
S-33L *	1420-¾	420	(500-¾)
CIRCLING **	1480-1½ 461 (500-1½)	2020-3 1001 (1100-3)	2080-3 1061 (1100-3)

HIRL all rwys  
REL Rwy 15L,  
33R, and 36  
334° to TACAN

WICHITA FALLS, TEXAS 33°59'N-98°30'W SHEPPARD AFB/WICHITA FALLS MUNI (KSPS)

Amdt 6 14JUL22

# HI-TACAN RWY 33L