

WICHITA FALLS, TEXAS

HI-ILS or LOC/DME Z RWY 33L

SHEPPARD AFB/
WICHITA FALLS MUNI (KSPS)

LOC I-SPS 109.7	APCH CRS 333°	Rwy ldg 33L TDZE 33L Arprt Elev	13,101 1000 1019	33C 10,003 989
---------------------------	-------------------------	---------------------------------------	---	------------------------------------

AL-454 [USAF]

DME required.

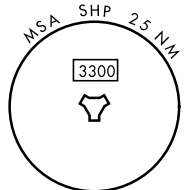
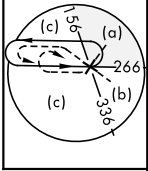
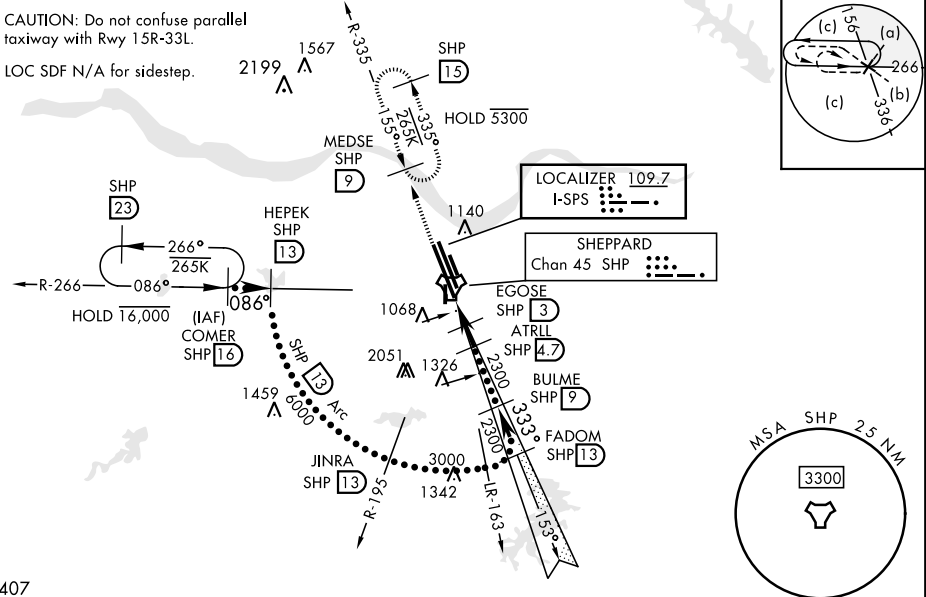


MISSED APPROACH: Climb and maintain 3300, intercept SHP TACAN R-335 to SHP R-335/9 DME (MEDSE) and hold.

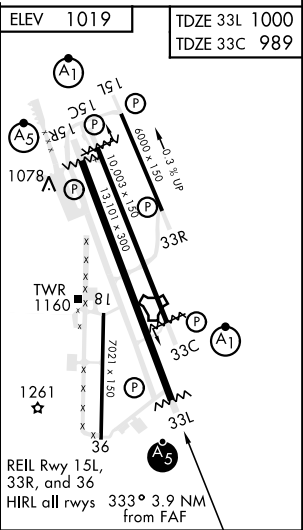
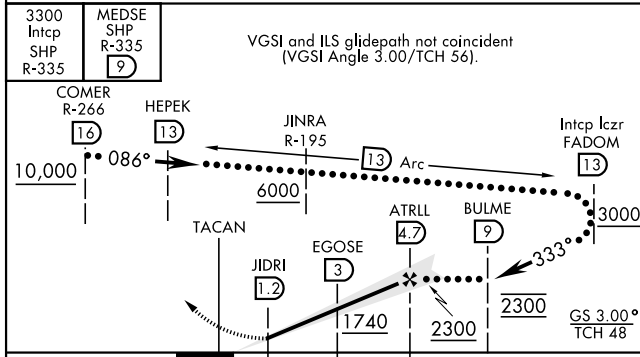
- * When ALS inop, increase CAT CDE vis to 3/4 mile.
- ** When ALS inop, increase CAT CDE vis to 1 mile.
- *** Circling not authorized W of Rwy 15R-33L.

ATIS * 132.05 269.9	APP CON 118.2 269.025	TOWER * 119.750 279.525 (CTAF)	GND CON 125.5 289.4	CLNC DEL 121.2 282.225	ASR
-------------------------------	---------------------------------	--	-------------------------------	----------------------------------	-----

CAUTION: Do not confuse parallel taxiway with Rwy 15R-33L.
LOC SDF N/A for sidestep.



1407
EMERG SAFE ALT 100 NM 4600



CATEGORY	C	D	E
S-ILS 33L *	1200-1/2	200 (200-1/2)	
S-LOC 33L **	1340-1/2	340 (400-1/2)	
SIDESTEP ** 33C	1440-7/8	451 (500-7/8)	
*** CIRCLING	1480-1 1/2 461 (500-1 1/2)	2020-3 1001 (1100-3)	2080-3 1061 (1100-3)

REIL Rwy 15L, 33R, and 36
HIRL all rwys 333° 3.9 NM from FAF

WICHITA FALLS, TEXAS

33°59'N-98°30'W

SHEPPARD AFB/WICHITA FALLS MUNI (KSPS)

Amdt 8 14JUL22

HI-ILS or LOC/DME Z RWY 33L

SC-2, 21 MAR 2024 to 18 APR 2024

SC-2, 21 MAR 2024 to 18 APR 2024