

# HI-VOR Z or TACAN RWY 21

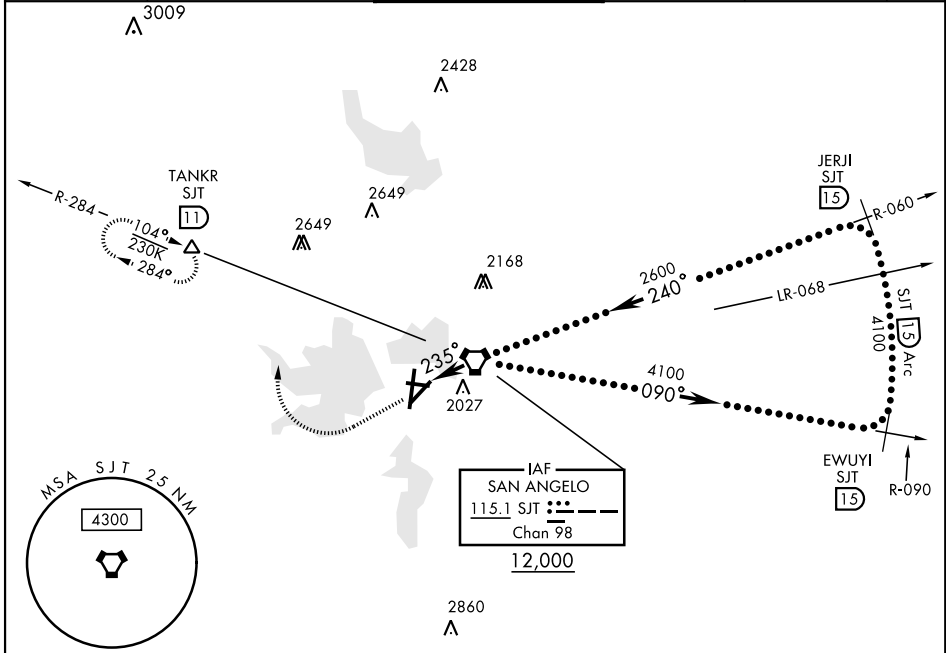
VORTAC SJT <b>115.1</b> Chan <b>98</b>	APCH CRS <b>235°</b>	Rwy Idg TDZE <b>1906</b> Arpt Elev <b>1919</b>	AL-367 [USAF]	SAN ANGELO RGNL MATHIS FLD (KSJT)
--	-------------------------	--	---------------	-----------------------------------

DME required.

\* Circling NA for CAT D W of Rwy 18-36.

MISSED APPROACH: Climb to 3000 then climbing right turn to 4400 on heading 360° and SJT VORTAC R-284 to TANKR INT/11 DME and hold, continue climb-in-hold to 4400.

ATIS <b>128.45 319.0</b>	SAN ANGELO APP CON <b>125.35 354.1</b>	MATHIS TOWER ★ <b>118.3 0</b> (CTAF) <b>284.7</b>	GND CON <b>121.9 348.6</b>	UNICOM <b>122.95</b>	ASR
-----------------------------	---	--	-------------------------------	-------------------------	-----



EMERG SAFE ALT 100 NM 4700

VGSI and descent angles not coincident (VGSI Angle 3.00/TCH 52). SJT VORTAC 12,000 → 090° → 4100 → 240° → 2600 → 235° → 1.8 NM → PAPI (1.8)	3000 ↑ hdg 360°	4400 ↻	SJT R-284	TANKR SJT (11)	ELEV 1919 [D] TDZE 1906 Rwy 18 Idg 7152 81 1907 235° 1.8 NM from FAF 4406 x 75 80354 x 150 5940 x 150 36 REIL Rwy 18 (L) HIRL Rwy 3-21 (L) MIRL Rwy 9-27, 18-36 (L)											
	PAPI (1.8) 3.34° TCH 59 2600 240° 4100 JERJI R-060 (15) EWUYI R-090 (15)	<table border="1"> <tr> <td>CATEGORY</td> <td>C</td> <td>D</td> <td>E</td> </tr> <tr> <td>S-21</td> <td>2300-1½</td> <td>394 (400-1½)</td> <td></td> </tr> <tr> <td>CIRCLING*</td> <td>2500-1½ 581 (600-1½)</td> <td>2580-2 661 (700-2)</td> <td>NOT AUTHORIZED</td> </tr> </table>				CATEGORY	C	D	E	S-21	2300-1½	394 (400-1½)		CIRCLING*	2500-1½ 581 (600-1½)	2580-2 661 (700-2)
CATEGORY	C	D	E													
S-21	2300-1½	394 (400-1½)														
CIRCLING*	2500-1½ 581 (600-1½)	2580-2 661 (700-2)	NOT AUTHORIZED													

# HI-VOR Z or TACAN RWY 21

SC-3, 21 MAR 2024 to 18 APR 2024

SC-3, 21 MAR 2024 to 18 APR 2024