

HI-VOR/DME or TACAN RWY 3

VORTAC SJT 115.1 Chan 98	APCH CRS 045°	Rwy Idg TDZE Arprt Elev 5940 1917 1919
--	-------------------------	--

AL-367 [USAF]

SAN ANGELO RGNL MATHIS FLD (KSJT)

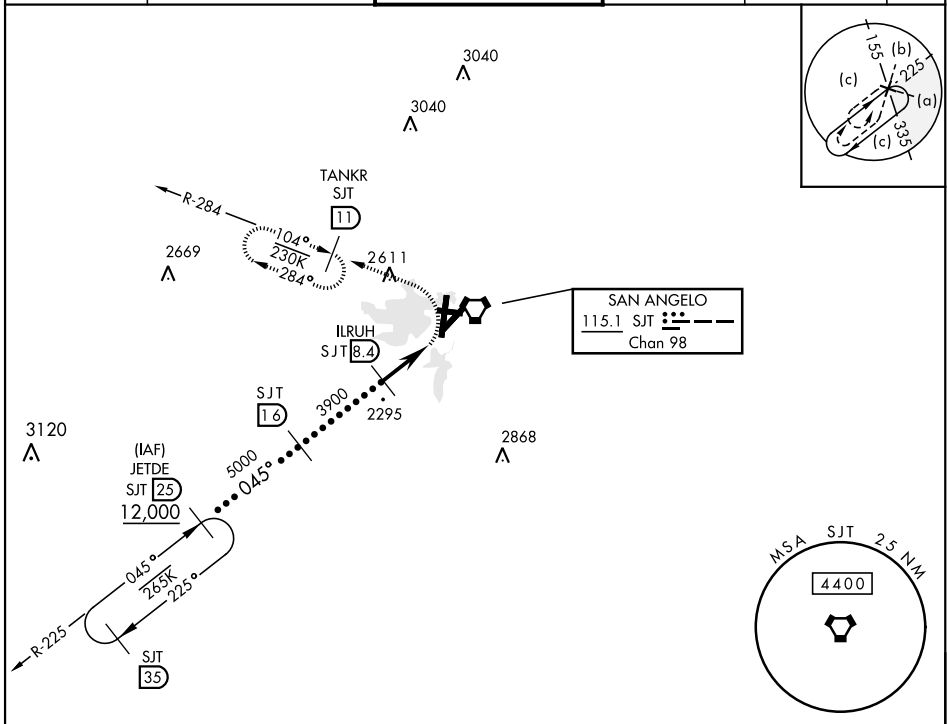
RADAR required.



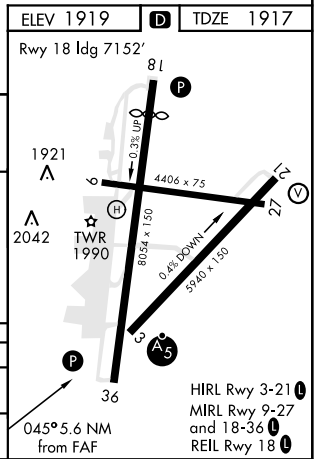
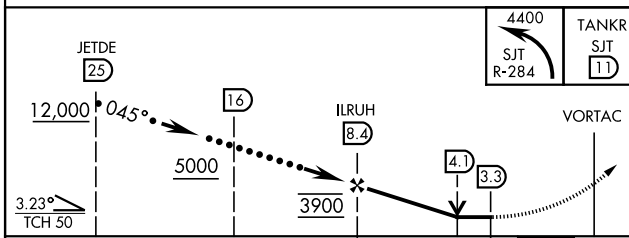
MISSED APPROACH: Climbing left turn to 4400 on SJT VORTAC R-284 to TANKR 11 DME and hold.

* Circling NA for CAT E west of Rwy 18-36.

ATIS 128.45 319.0	SAN ANGELO APP CON 125.35 354.1	MATHIS TOWER ★ 118.3 0 (CTAF) 284.7	GND CON 121.9 348.6	UNICOM 122.95	ASR
-----------------------------	---	--	-------------------------------	-------------------------	-----



EMERG SAFE ALT 100 NM 5100



CATEGORY	C		D		E
S-3	2420-1	503	(600-1)		2420-1¼ 503 (600-1¼)
CIRCLING*	2460-1½ 541 (600-1½)		2480-2 561 (600-2)		2640-2½ 721 (800-2½)

HI-VOR/DME or TACAN RWY 3

SC-3, 21 MAR 2024 to 18 APR 2024

SC-3, 21 MAR 2024 to 18 APR 2024