

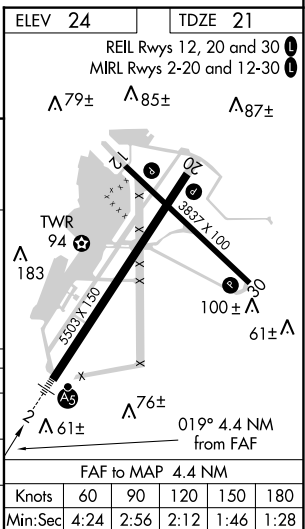
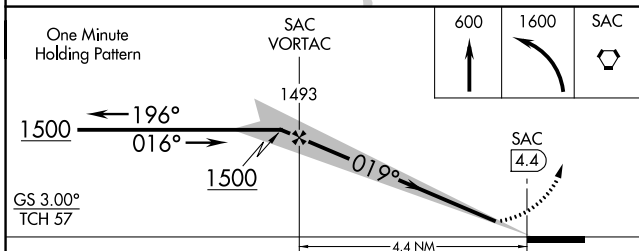
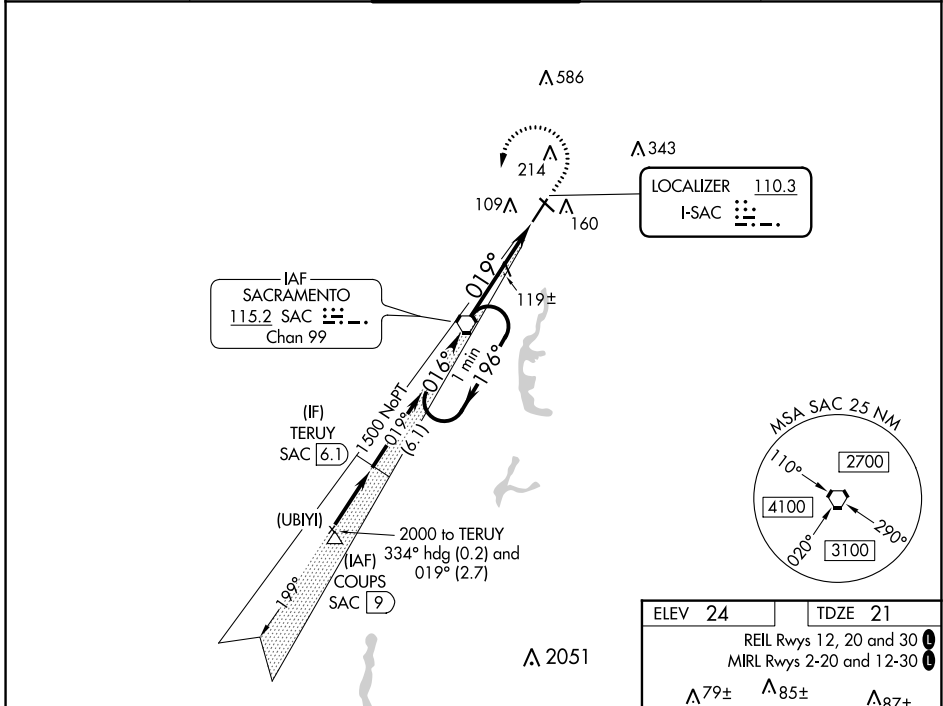
LOC I-SAC <b>110.3</b>	APP CRS <b>019°</b>	Rwy Idg <b>5503</b> TDZE <b>21</b> Apt Elev <b>24</b>
---------------------------	------------------------	---

# ILS or LOC RWY 2

SACRAMENTO EXEC (SAC)

<p><b>▼</b> When local altimeter setting not received, use Sacramento Intl altimeter setting and increase DA to 322 feet, increase all MDAs 40 feet and Circling Cat D visibility ¼ SM. Autopilot coupled approach NA below 335 feet. For inop MALSRS, increase S-ILS 2 all Cats visibility to ¾ SM and S-LOC 2 Cat C/D visibility to 1 SM. For inop MALSRS when using Sacramento Intl altimeter setting, increase S-ILS 2 all Cats visibility to ¾ SM.</p>	<p>MALSRS</p>	<p>MISSED APPROACH: Climb to 600 then climbing left turn to 1600 direct SAC VORTAC and hold.</p>
---	---------------	--

ATIS <b>125.5</b>	NORCAL APP CON <b>125.25 257.9</b>	EXEC TOWER* <b>119.5 (CTAF) 278.8</b>	GND CON <b>125.0</b>	UNICOM <b>122.95</b>
----------------------	---------------------------------------	--	-------------------------	-------------------------



CATEGORY	A	B	C	D
S-ILS 2	294-½ 273 (300-½)			
S-LOC 2	380-½	359 (400-½)	380-⅝	359 (400-⅝)
CIRCLING	500-1 476 (500-1)	520-1 496 (500-1)	560-1½ 536 (600-1½)	800-2½ 776 (800-2½)

SW-2, 21 MAR 2024 to 18 APR 2024

SW-2, 21 MAR 2024 to 18 APR 2024