

LOC I-MCC <b>109.7</b>	APP CRS <b>163°</b>	Rwy ldg <b>10599</b> TDZE <b>77</b> Apt Elev <b>77</b>
---------------------------	------------------------	--

# ILS or LOC RWY 16

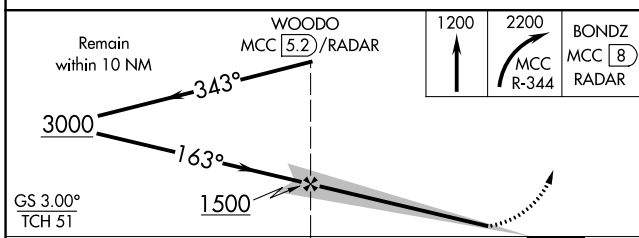
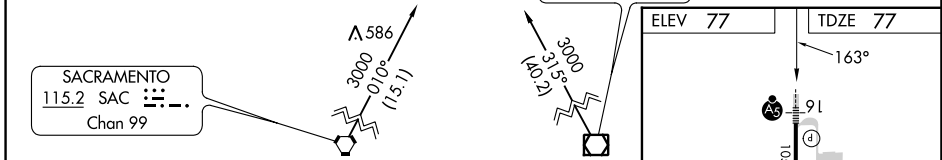
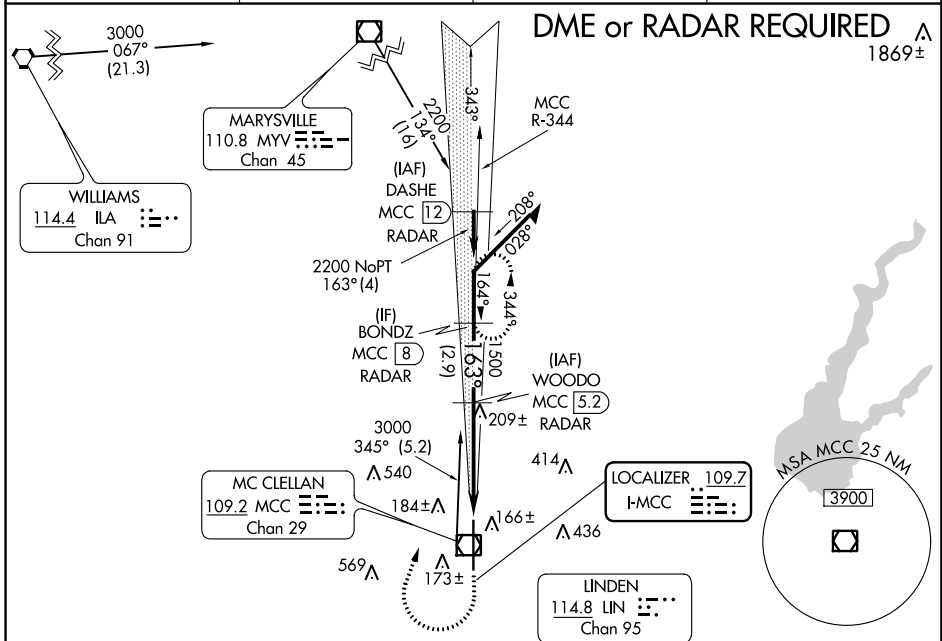
MC CLELLAN AIRFIELD (MCC)

**NA** DME from MCC VOR/DME. If local altimeter setting is not received, use Sacramento Intl altimeter setting and increase all DH/MDAs 40 feet.

**MALS**

**MISSED APPROACH:** Climb to 1200 then climbing right turn to 2200 via MCC VOR/DME R-344 to BONDZ/MCC 8 DME/RADAR and hold.

AWOS-3 <b>125.975</b>	NORCAL APP CON <b>127.4 317.5</b>	CINC DEL <b>119.825</b>	UNICOM <b>122.975 (CTAF)</b>
--------------------------	--------------------------------------	----------------------------	---------------------------------



CATEGORY	A	B	C	D
S-ILS 16		277-1/2	200 (200-1/2)	
S-LOC 16		460-1/2	383 (400-1/2)	460-3/4 383 (400-3/4)
CIRCLING	NA			

FAF to MAP 4.3 NM					
Knots	60	90	120	150	180
Min:Sec	4:18	2:52	2:09	1:43	1:26

SW-2, 21 MAR 2024 to 18 APR 2024

SW-2, 21 MAR 2024 to 18 APR 2024