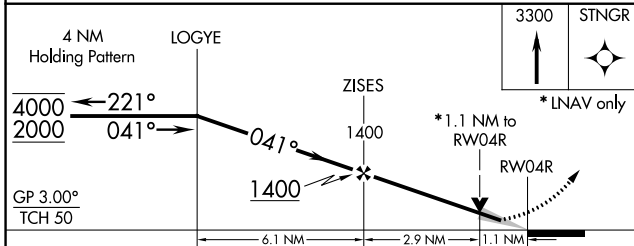
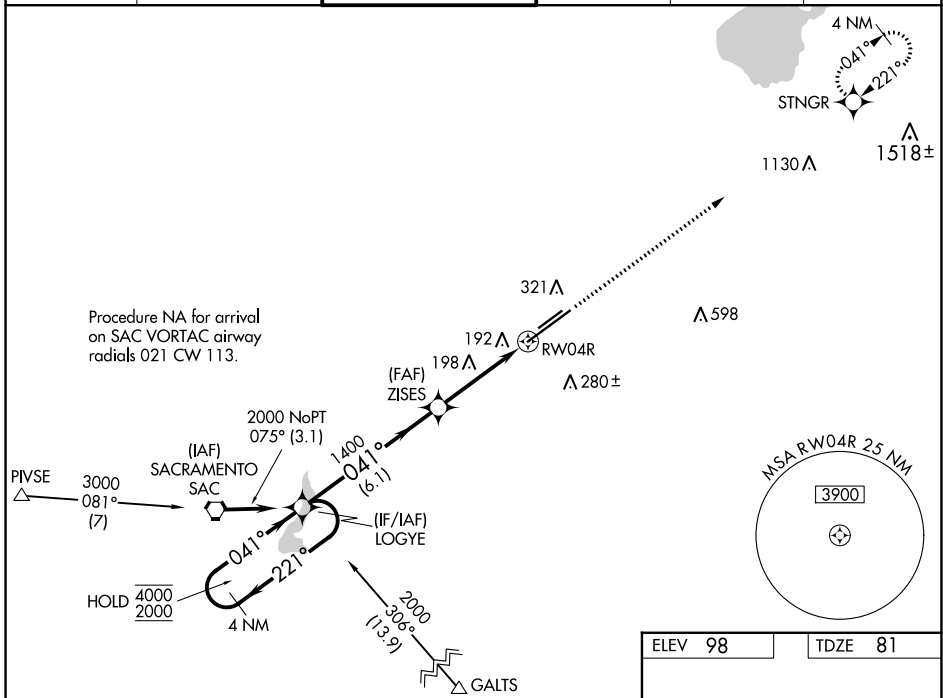


WAAS CH 45601 W04A	APP CRS 041°	Rwy Idg 11301 TDZE 81 Apt Elev 98
---------------------------------	------------------------	--

RNAV (GPS) RWY 4R

SACRAMENTO MATHER (MHR)

RNP APCH.		MISSED APPROACH: Climb to 3300 direct STNGR and hold.			
<p>▽ Circling NA northwest of Rwy 4R-22L. For uncompensated Baro-VNAV systems, LNAV/VNAV NA below -15°C or above 37°C.</p>					
ATIS 118.325	NORCAL APP CON 127.4 317.5	MATHER TOWER ★ 120.65 (CTAF) 0 282.25	GND CON 121.85 307.9	CLNC DEL 121.85 307.9	UNICOM 122.95



ELEV 98	TDZE 81
---------	---------

MIRL Rwy 4L-22R 0

HIRL Rwy 4R-22L 0

TWR 211 ±

688' X 150' ±

1130' X 150' ±

SW-2, 21 MAR 2024 to 18 APR 2024

SW-2, 21 MAR 2024 to 18 APR 2024