

BOISE, IDAHO

AL-57 (FAA)

23278

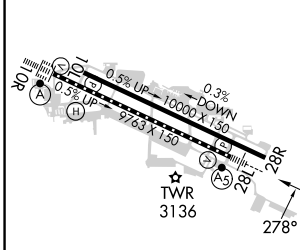
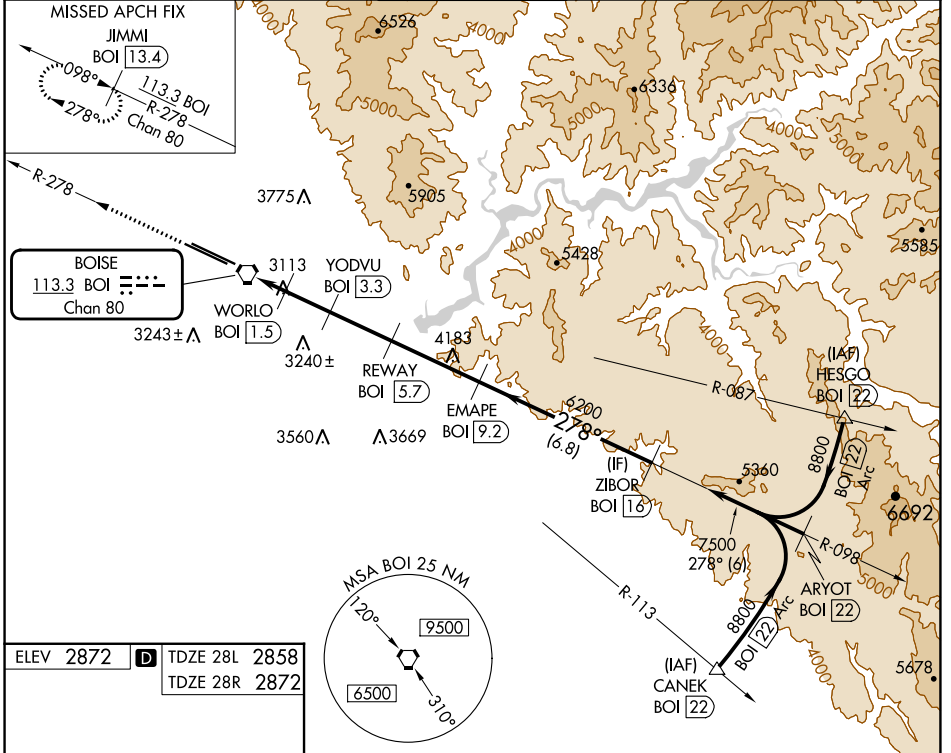
VORTAC BOI <b>113.3</b> Chan 80	APP CRS <b>278°</b>	Rwy Idg	28L	28R
		TDZE	<b>9763</b>	<b>10000</b>
		Apt Elev	<b>2858</b>	<b>2872</b>

# VOR Y or TACAN Y RWY 28L

BOISE AIR TRML/GOWEN FLD (BOI)

DME required.	MALSR Rwy 28L	MISSED APPROACH: Climb to 6000 on BOI VORTAC R-278 to JIMMI/13.4 DME and hold.
<p>Circling NA north of Rwy 10L-28R. For inop ALS, increase S-28L Cat E visibility to 1½ SM.</p>		

D-ATIS <b>123.9 290.4</b>	BIG SKY APP CON <b>119.6 269.4</b>	BOISE TOWER <b>118.1 257.8</b>	GND CON <b>121.7 348.6</b>	CLNC DEL <b>125.9 323.2</b>
------------------------------	---------------------------------------	-----------------------------------	-------------------------------	--------------------------------



ELEV 2872	<b>D</b> TDZE 28L 2858	TDZE 28R 2872
REIL Rwy 10L		
TDZ/CL Rws 10R and 28L		
HIRL Rws 10L-28R and 10R-28L		

6000 BOI R-278	JIMMI BOI 13.4	YODVU BOI 3.3	REWAY BOI 5.7	EMAPE BOI 9.2	ZIBOR BOI 16
3680	WORLO BOI 1.5	4260	5060	6200	7500
0.8	0.6	0.9 NM	1.8 NM	2.4 NM	3.5 NM
0.8	0.6	0.9 NM	1.8 NM	2.4 NM	3.5 NM

CATEGORY	A	B	C	D	E
S-28L	3380/24	522 (600-½)	3380/55	522 (600-1)	
SIDESTEP 28R	3380-1⅓	508 (600-1⅓)	3380-1⅞	508 (600-1⅞)	3380-2½
<b>C</b> CIRCLING	3440-1	568 (600-1)	3640-2¼	768 (800-2¼)	3820-3
				948 (1000-3)	3880-3

BOISE, IDAHO  
Amdt 3 14JUL22

43°34'N-116°13'W

# VOR Y or TACAN Y RWY 28L

NW-1, 21 MAR 2024 to 18 APR 2024

NW-1, 21 MAR 2024 to 18 APR 2024