

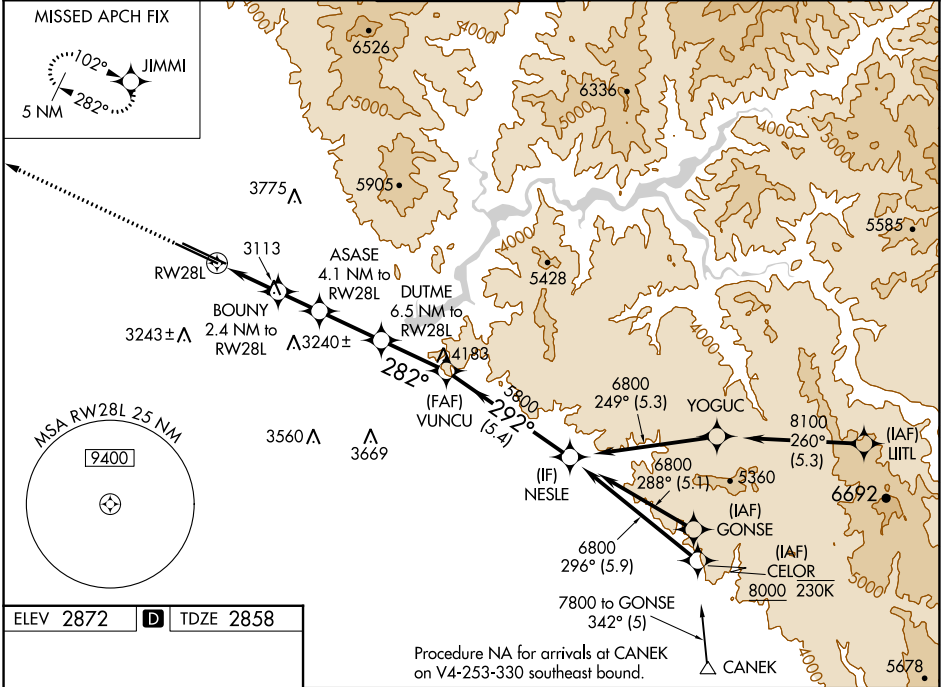
WAAS CH <b>7702</b> <b>W28A</b>	APP CRS <b>282°</b>	Rwy Idg TDZE Apt Elev	<b>9763</b> <b>2858</b> <b>2872</b>
---------------------------------------	------------------------	-----------------------------	---

# RNAV (GPS) Y RWY 28L

BOISE AIR TRML/GOWEN FLD (BOI)

RNP APCH - GPS.		MALSR	MISSED APPROACH: Climb to 6000 direct JIMMI and hold, continue climb-in-hold to 6000.
<p><b>⚠</b> Circling NA north of Rwy 10L-28R. For uncompensated Baro-VNAV systems, LNAV/VNAV NA below -1.4°C or above 54°C. For inop ALS, increase LPV all Cats visibility to RVR 4500, and LNAV/VNAV all Cats visibility to RVR 6000.</p>			

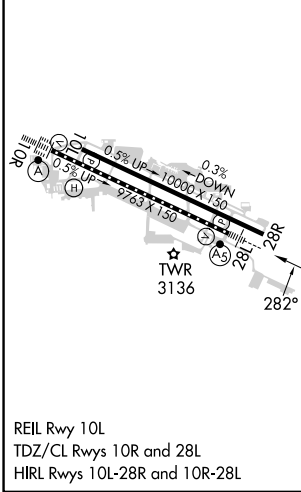
D-ATIS <b>123.9 290.4</b>	BIG SKY APP CON <b>119.6 269.4</b>	<b>BOISE TOWER</b> <b>118.1 257.8</b>	GND CON <b>121.7 348.6</b>	CLNC DEL <b>125.9 323.2</b>
------------------------------	---------------------------------------	--	-------------------------------	--------------------------------



NW-1, 21 MAR 2024 to 18 APR 2024

NW-1, 21 MAR 2024 to 18 APR 2024

ELEV 2872	<b>D</b> TDZE 2858
-----------	--------------------



REIL Rwy 10L  
TDZ/CL Rwys 10R and 28L  
HIRL Rwys 10L-28R and 10R-28L

6000	JIMMI	VGSi and RNAV glidepath not coincident (VGSi Angle 3.00/TCH 50).					
		BOUNY	ASASE	DUTME	VUNCU	NESLE	
		1.4 NM to RWY 28L	4.1 NM to RWY 28L	6.5 NM to RWY 28L	5800	6800	
		3680	4200	4980	5800	6800	
		1.4 NM	1 NM	1.6 NM	2.5 NM	2.6 NM	5.4 NM
		GP 3.00° TCH 50					
CATEGORY	A	B	C	D			
LPV DA		3160/24	302 (300-½)				
LNAV/VNAV DA		3267/40	409 (400-¾)				
LNAV MDA	3380/24	522 (600-½)	3380/55	522 (600-1)			
<b>C</b> CIRCLING	3440-1	568 (600-1)	3640-2¼	768 (800-2¼)	3820-3	948 (1000-3)	