

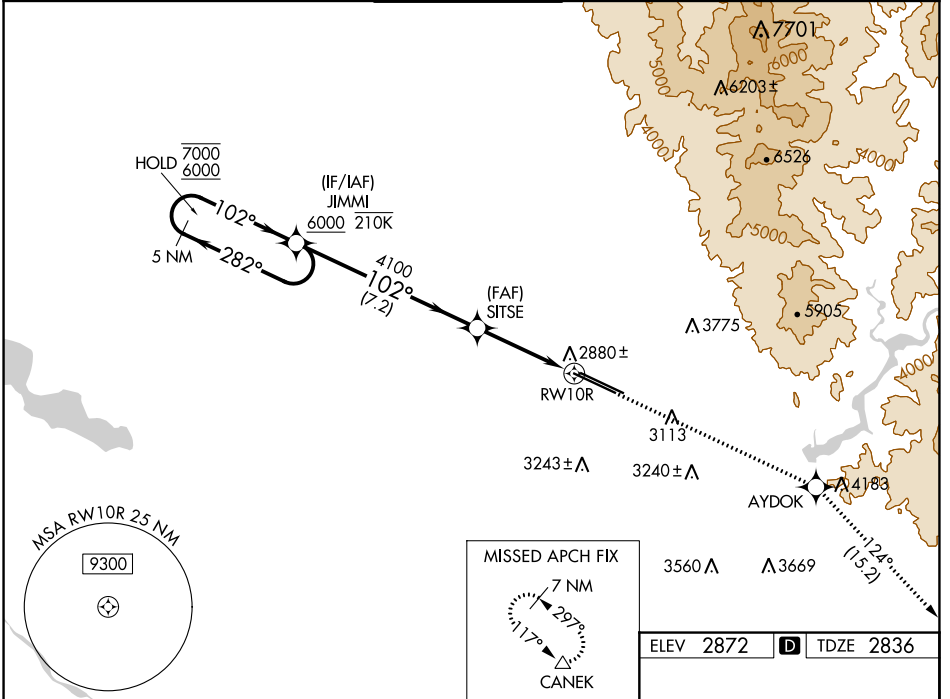
WAAS CH 40203 W10B	APP CRS 102°	Rwy Idg TDZE Apt Elev	9763 2836 2872
--	------------------------	-----------------------------	---

RNAV (GPS) Y RWY 10R

BOISE AIR TRML/GOWEN FLD (BOI)

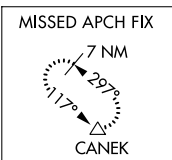
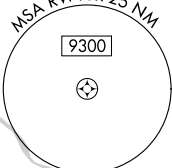
RADAR required for procedure entry. RNP APCH - GPS.		ALSIF-2	MISSED APPROACH: Climb to 7300 direct AYDOK and on track 124° to CANEK and hold.	
Circling NA north of Rwy 10L-28R. For uncompensated Baro-VNAV systems, LNAV/VNAV NA below -14°C or above 54°C.				

D-ATIS 123.9 290.4	BIG SKY APP CON 119.6 269.4	BOISE TOWER 118.1 257.8	GND CON 121.7 348.6	CLNC DEL 125.9 323.2
------------------------------	---------------------------------------	-----------------------------------	-------------------------------	--------------------------------

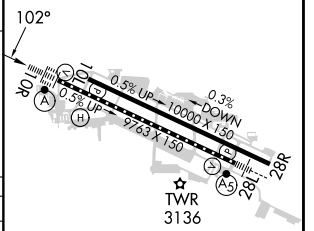
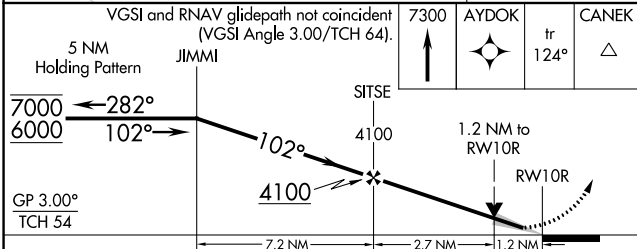


NW-1, 21 MAR 2024 to 18 APR 2024

NW-1, 21 MAR 2024 to 18 APR 2024



ELEV 2872		TDZE 2836
-----------	--	-----------



CATEGORY	A	B	C	D
LPV DA	3036/18		200 (200-½)	
LNAV/VNAV DA	3173/26		337 (400-½)	
LNAV MDA	3260/24	424 (400-½)	3260/40	424 (400-¾)
CIRCLING	3440-1	568 (600-1)	3640-2¼ 768 (800-2¼)	3820-3 948 (1000-3)

REIL Rwy 10L
TDZ/CL Rwys 10R and 28L
HIRL Rwys 10L-28R and 10R-28L