

APP CRS	Rwy ldg	<b>10000</b>
<b>282°</b>	TDZE	<b>2872</b>
	Apt Elev	<b>2872</b>

# RNAV (RNP) Z RWY 28R

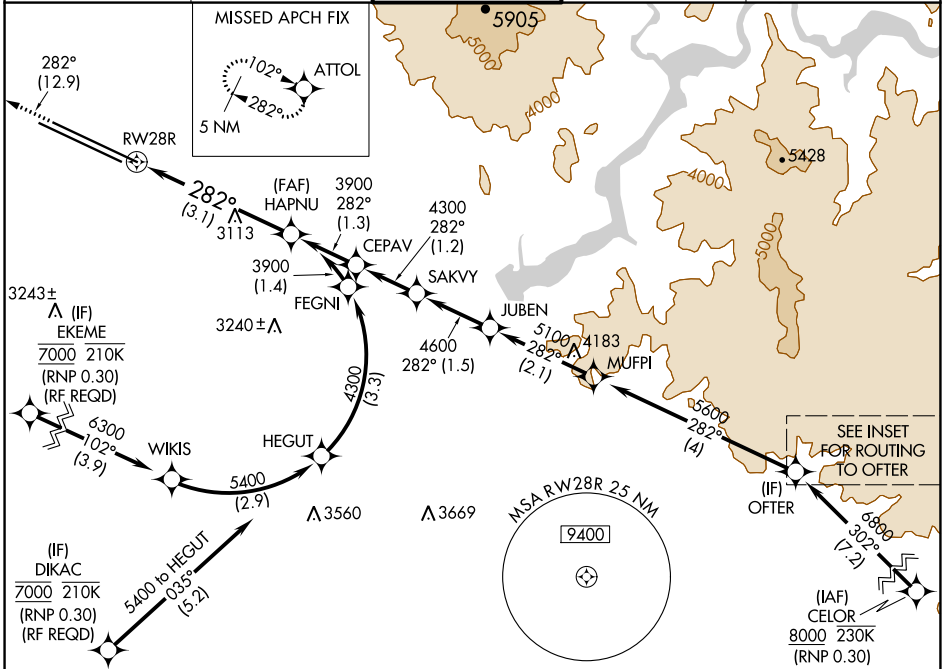
BOISE AIR TRML/GOWEN FLD (BOI)

RNP AR APCH.

▼ For uncompensated Baro-VNAV systems, procedure NA below -1.5°C or above 54°C.

MISSED APPROACH: Climb to 6000 on track 282° to ATTOL and hold, continue climb-in-hold to 6000.

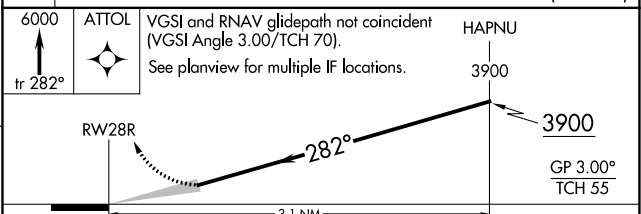
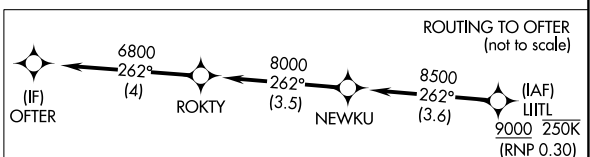
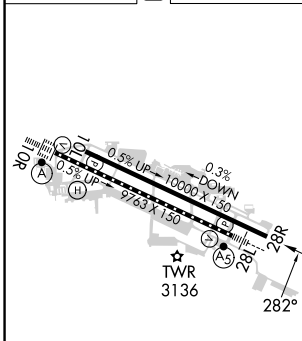
D-ATIS	BIG SKY APP CON	BOISE TOWER	GND CON	CLNC DEL
<b>123.9 290.4</b>	<b>119.6 269.4</b>	<b>118.1 257.8</b>	<b>121.7 348.6</b>	<b>125.9 323.2</b>



NW-1, 21 MAR 2024 to 18 APR 2024

NW-1, 21 MAR 2024 to 18 APR 2024

ELEV **2872** **D** TDZE **2872**



CATEGORY	A	B	C	D
RNP 0.15 DA		3204-1	332 (400-1)	
RNP 0.30 DA		3303-1¼	431 (500-1¼)	

REIL Rwy 10L  
 TDZ/CL Rwy 10R and 28L  
 HIRL Rwy 10L-28R and 10R-28L

## AUTHORIZATION REQUIRED