

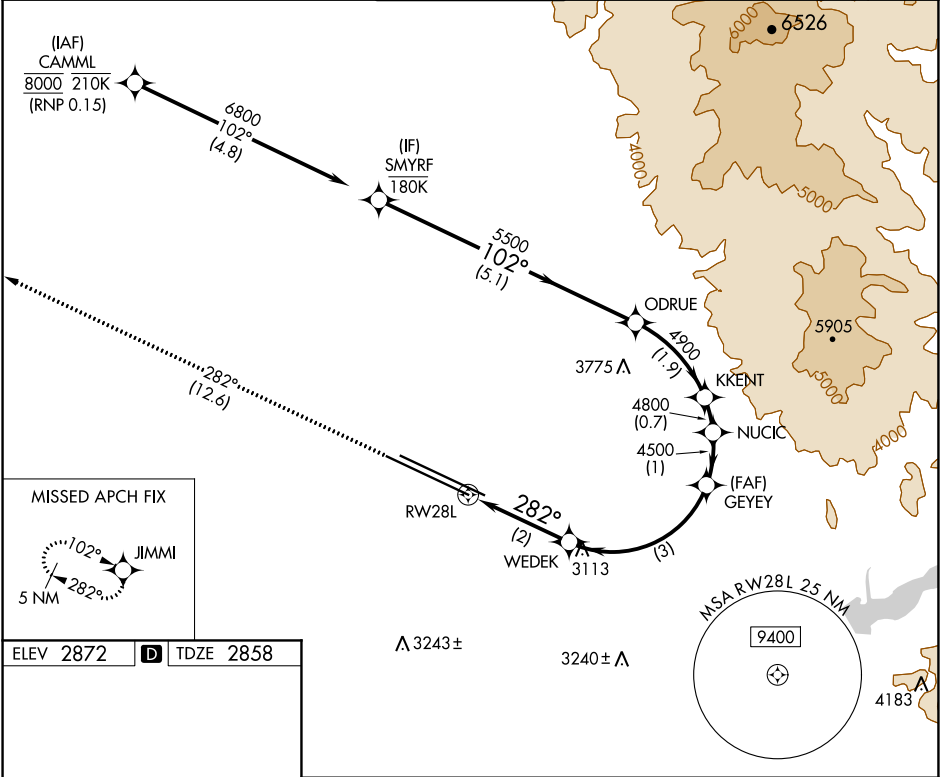
APP CRS	Rwy Idg	<b>9763</b>
<b>282°</b>	TDZE	<b>2858</b>
	Apt Elev	<b>2872</b>

# RNAV (RNP) X RWY 28L

BOISE AIR TRML/GOWEN FLD (BOI)

RNP AR APCH - GPS.	MALSR	MISSED APPROACH: Climb to 6000 on track 282° to JIMMI and hold, continue climb-in-hold to 6000.
For uncompensated Baro-VNAV systems, procedure NA below -14°C or above 54°C.		

D-ATIS <b>123.9 290.4</b>	BIG SKY APP CON <b>119.6 269.4</b>	<b>BOISE TOWER</b> <b>118.1 257.8</b>	GND CON <b>121.7 348.6</b>	CLNC DEL <b>125.9 323.2</b>
------------------------------	---------------------------------------	--	-------------------------------	--------------------------------



NW-1, 21 MAR 2024 to 18 APR 2024

NW-1, 21 MAR 2024 to 18 APR 2024

ELEV 2872 **D** TDZE 2858

REL Rwy 10L  
TDZ/CL Rws 10R and 28L  
HIRL Rws 10L-28R and 10R-28L

6000	JIMMI	VGSi and RNAV glidepath not coincident (VGSi Angle 3.00/TCH 50).				SMYRF	
tr 282°		WEDEK	GYEY	NUCIC	KKENT	ODRUE	
		3545	4500	4800	4900	5500	
				4500			
						6800	
						GP 3.00° TCH 50	
		2 NM	3 NM	1 NM	0.7 NM	1.9 NM	5.1 NM

CATEGORY	A	B	C	D
RNP 0.15 DA	3229/35 371 (400- $\frac{1}{2}$ )			

## AUTHORIZATION REQUIRED