

KOURT FOUR ARRIVAL (RNAV)

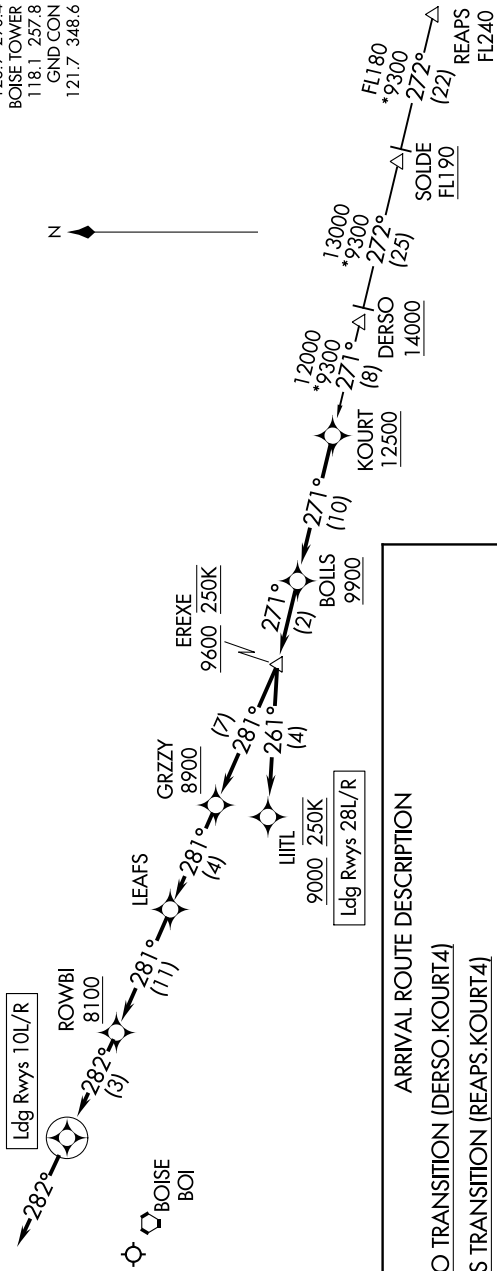
AL-57 (FAA)

BOISE AIR TRML/GOWEN FLD (BOI)
BOISE, IDAHO

BIG SKY APP CON
119.6 289.4 (SOUTH)
126.9 351.85 (NORTH)
D-ATIS
123.9 290.4
BOISE TOWER
118.1 257.8
GND CON
121.7 348.6



RNAV 1 - GPS.
RADAR required.



ARRIVAL ROUTE DESCRIPTION

DERSO TRANSITION (DERSO.KOURT4)

REAPS TRANSITION (REAPS.KOURT4)

From KOURT on track 271° to cross BOLLS at or above 9900, then on track 271° to cross EREXE at or above 9600 and at 250K.

LANDING RUNWAYS 10L/R: From EREXE on track 281° to cross GRZY at or above 8900, then on track 281° to LEAFS, then on track 281° to cross ROWBI at or above 8100, then on track 282° to cross KOLIKE at 8000 and at 210K, then on track 282°. Expect assigned approach or RADAR vectors to final approach course.

LANDING RUNWAYS 28L/R: From EREXE on track 261° to cross LITL at or above 9000 and at 250K. Expect assigned approach or RADAR vectors to final approach course.

NOTE: Chart not to scale.

NW-1, 21 MAR 2024 to 18 APR 2024

NW-1, 21 MAR 2024 to 18 APR 2024

KOURT FOUR ARRIVAL (RNAV)