

LOC/DME I-BOI 111.1 Chan 48	APP CRS 102°	Rwy Idg 10R 10L	9763 10000
		TDZE 2836 2844	
		Apt Elev 2872 2872	

I LS Y or LOC Y RWY 10R

BOISE AIR TRML/GOWEN FLD (BOI)

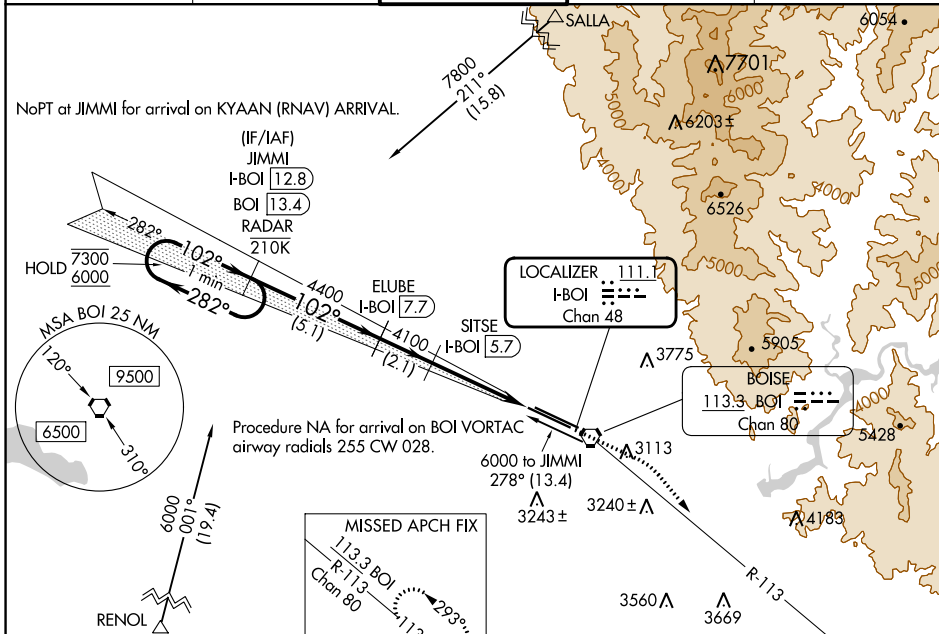
DME required. RNAV 1 - GPS. From SALLA and RENOL.

ALSF-2
Rwy 10R

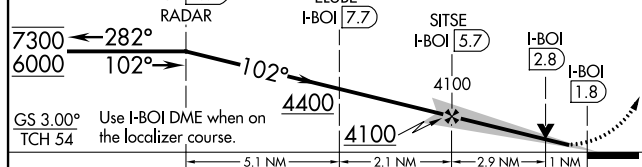
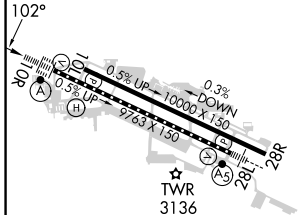
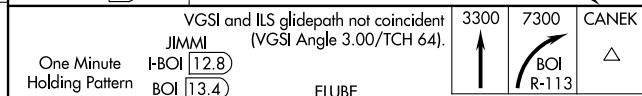
⚠ For inop ALS, increase S-LOC 10R Cats C/D visibility to RVR 5500. Circling NA north of Rwy 10L-28R.

MISSED APPROACH: Climb to 3300 then climbing right turn to 7300 on BOI VORTAC R-113 to CANEK/BOI VORTAC 22 DME and hold.

D-ATIS 123.9 290.4	BIG SKY APP CON 119.6 269.4	BOISE TOWER 118.1 257.8	GND CON 121.7 348.6	CLNC DEL 125.9 323.2
------------------------------	---------------------------------------	--	-------------------------------	--------------------------------



ELEV 2872	D TDZE 10R 2836
	TDZE 10L 2844



CATEGORY	A	B	C	D
S-LS 10R	3036/18 200 (200-½)			
S-LOC 10R	3200/24	364 (400-½)	3200/35	364 (400-¾)
SIDESTEP 10L	3220-1	376 (400-1)	3220-1½ 376 (400-1½)	3220-2 376 (400-2)
C CIRCLING	3440-1	568 (600-1)	3640-2¼ 768 (800-2¼)	3820-3 948 (1000-3)

REIL Rwy 10L
TDZ/CL Rws 10R and 28L
HIRL Rws 10L-28R and 10R-28L

NW-1, 21 MAR 2024 to 18 APR 2024

NW-1, 21 MAR 2024 to 18 APR 2024