

LOC/DME I-BOI 111.1 Chan 48	APP CRS 102°	Rwy Idg 9763 TDZE 2836 Apt Elev 2872
------------------------------------------	------------------------	--------------------------------------------------------------------------

ILS Y RWY 10R (CAT II & III)

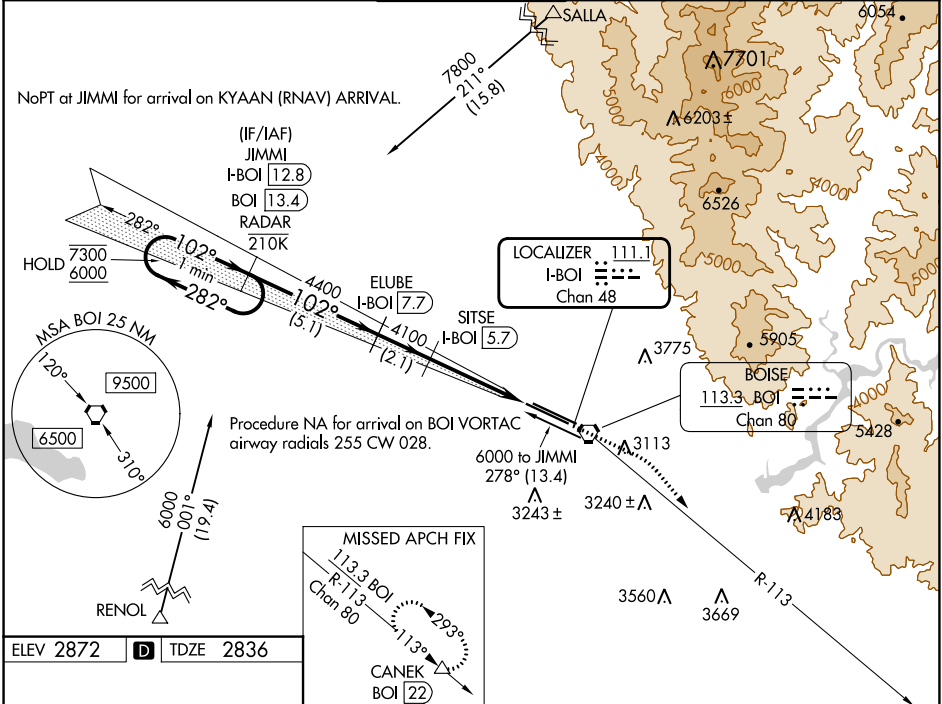
BOISE AIR TRML/GOWEN FLD (BOI)

DME required. RNAV 1 - GPS. From SALLA and RENOL.

ALSF-2

MISSED APPROACH: Climb to 3300 then climbing right turn to 7300 on BOI VORTAC R-113 to CANEK/BOI VORTAC 22 DME and hold.

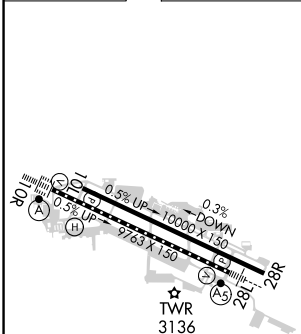
D-ATIS 123.9 290.4	BIG SKY APP CON 119.6 269.4	BOISE TOWER 118.1 257.8	GND CON 121.7 348.6	CLNC DEL 125.9 323.2
------------------------------	---------------------------------------	-----------------------------------	-------------------------------	--------------------------------



NW-1, 21 MAR 2024 to 18 APR 2024

NW-1, 21 MAR 2024 to 18 APR 2024

ELEV 2872	D TDZE 2836
-----------	--------------------



One Minute Holding Pattern JIMMI I-BOI 12.8 BOI 13.4 RADAR 7300 ← 282° 6000 102° →	VGS1 and ILS glidepath not coincident (VGS1 Angle 3.00/TCH 64). 3300 ↑ 7300 ↗ CANEK △ Use I-BOI DME when on the localizer course.
ELUBE I-BOI 7.7 SITSE I-BOI 5.7 4400 4100 GS 3.00° TCH 54 5.1 NM 2.1 NM 3.8 NM 978'	

CATEGORY	A	B	C	D
S-ILS 10R	CAT II RA 124/12 100 DA 2936			
S-ILS 10R	CAT III RVR 03			

CATEGORY II & III ILS - SPECIAL AIRCREW & AIRCRAFT CERTIFICATION REQUIRED

REIL Rwy 10L
 TDZ/CL Rws 10R and 28L
 HIRL Rws 10L-28R and 10R-28L