

HI-ILS Z or LOC Z RWY 10R

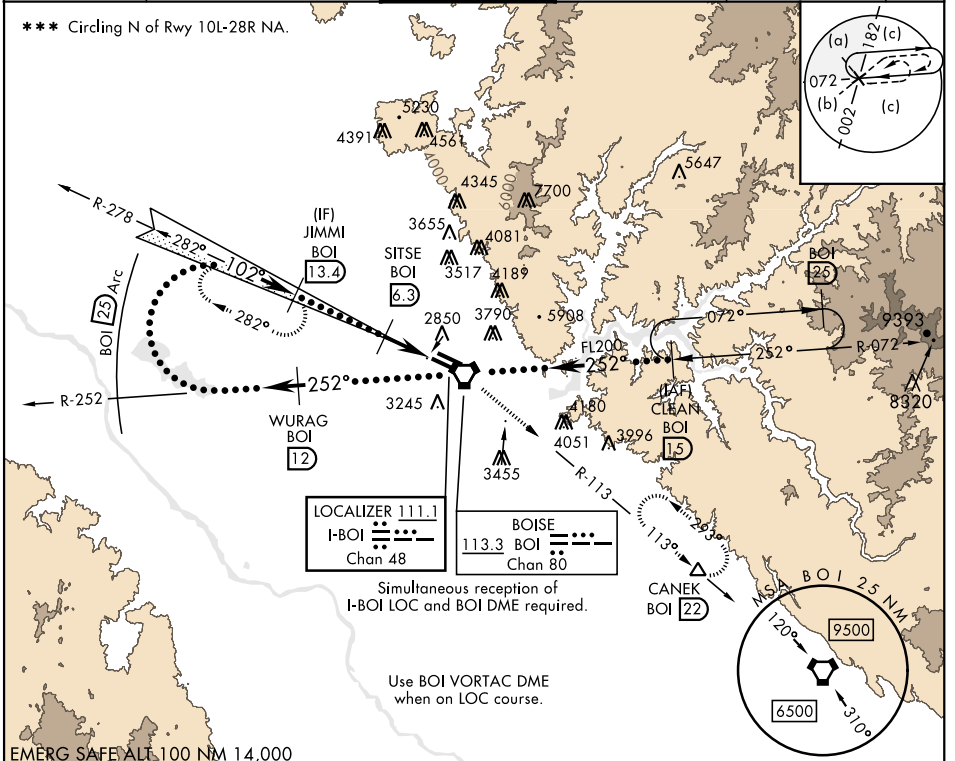
LOC I-BOI 111.1	APCH CRS 102°	Rwy Idg TDZE Arpt Elev 9763 2836 2872	AL-57 [USAF]	BOISE AIR TERMINAL (GOWEN FLD)	(KBOI)
---------------------------	-------------------------	---	--------------	--------------------------------	--------

DME required. **ALSF-2**

MISSED APPROACH: Climb to 7300 on BOI VORTAC R-113 to CANEK/BOI 22 DME and hold.

*** When ALS inop, increase RVR to 40 and vis to 3/4 mile.
 ** When ALS inop, increase RVR to 55 and vis to 1 mile.

ATIS 123.9 290.4	BIG SKY APP CON 119.6 269.4	BOISE TOWER 118.1 257.8	GND CON 121.7 348.6	CLNC DEL 125.9 323.2	ASOS
----------------------------	---------------------------------------	-----------------------------------	-------------------------------	--------------------------------	------



EMERG SAFE ALL 100 NM 14,000

Simultaneous reception of I-BOI LOC and BOI DME required.

Use BOI VORTAC DME when on LOC course.

7300	BOI R-113	CANEK	VGSI and ILS glidepath not coincident (VGSI Angle 3.00/TCH 64).			ELEV 2872	TDZE 2836	
Right at 12,000 remain within 25 NM of BOI VORTAC		WURAG BOI 12	VORTAC		CLEAN BOI 15	<p>TDZL/CL Rwy 10R-28L HIRL Rwys 10L-28R, 10R-28L REIL Rwy 10L</p>		
GS 3.00° TCH 54	JIMMI BOI 13.4	SITSE BOI 6.3	BOI 3.4	AVVVU BOI 2.7	FL200			FL200
CATEGORY	C	D	E					
S-ILS 10R **	3036/18	200	(200-1/2)					
S-LOC 10R **	3200/35	364	(400-3/8)					
***	3640-2 1/4 768 (800-2 1/4)	3820-3 948 (1000-3)	3880-3 1008 (1100-3)					
C CIRCLING								

HI-ILS Z or LOC Z RWY 10R

NW-1, 21 MAR 2024 to 18 APR 2024

NW-1, 21 MAR 2024 to 18 APR 2024