

# TBARR THREE ARRIVAL (RNAV) Transition Routes

DENVER APP CON

120.35 379.3

D-ATIS ARR

125.6 379.9

DENVER TOWER

128.75 273.55 (Rwy 7-25)

132.35 239.275 (Rwys 8-26, 17L-35R)

124.3 322.45 (Rwy 17R-35L)

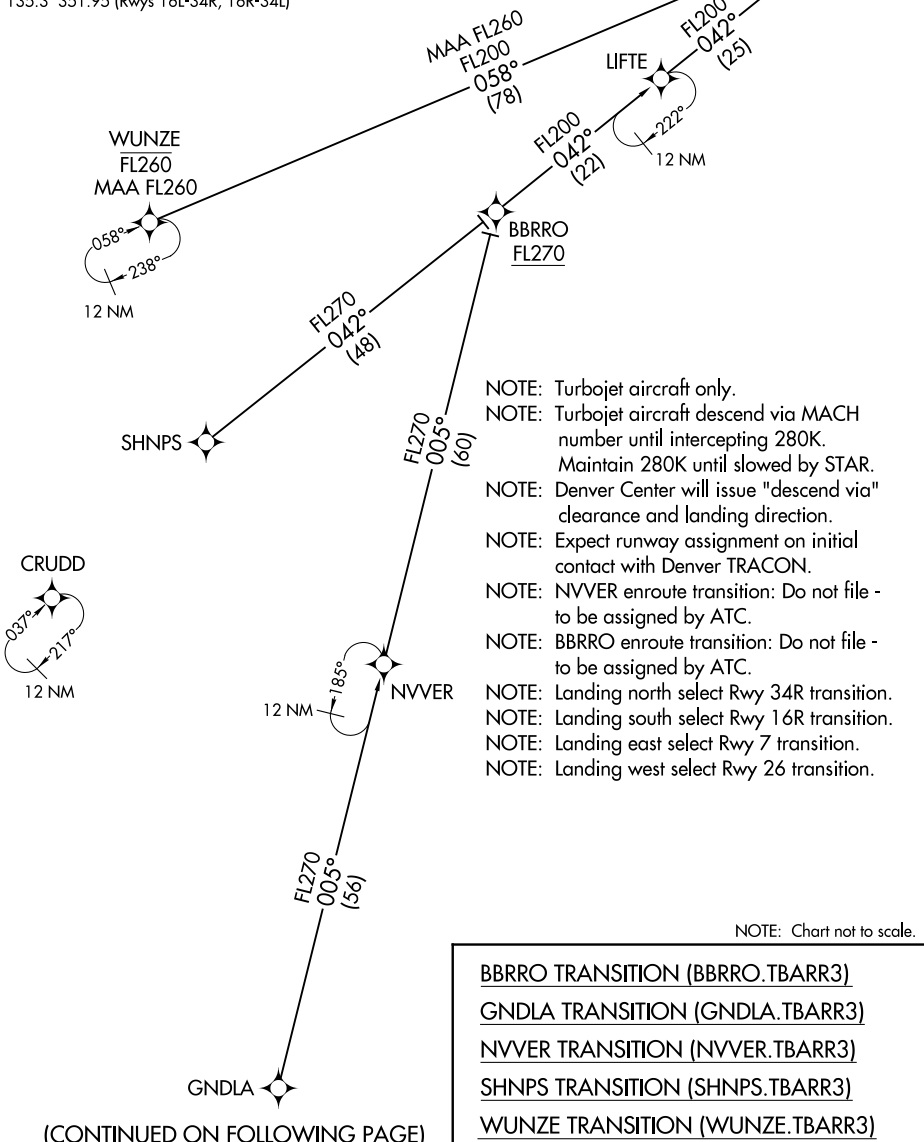
135.3 351.95 (Rwys 16L-34R, 16R-34L)

RNAV 1-DME/DME/IRU or GPS

RADAR required for non-GPS equipped aircraft

See following page  
for arrival routes.

TBARR  
FL220  
FL200



- NOTE: Turbojet aircraft only.
- NOTE: Turbojet aircraft descend via MACH number until intercepting 280K. Maintain 280K until slowed by STAR.
- NOTE: Denver Center will issue "descend via" clearance and landing direction.
- NOTE: Expect runway assignment on initial contact with Denver TRACON.
- NOTE: NVVER enroute transition: Do not file - to be assigned by ATC.
- NOTE: BBRRO enroute transition: Do not file - to be assigned by ATC.
- NOTE: Landing north select Rwy 34R transition.
- NOTE: Landing south select Rwy 16R transition.
- NOTE: Landing east select Rwy 7 transition.
- NOTE: Landing west select Rwy 26 transition.

NOTE: Chart not to scale.

- BBRRO TRANSITION (BBRRO.TBARR3)
- GNDLA TRANSITION (GNDLA.TBARR3)
- NVVER TRANSITION (NVVER.TBARR3)
- SHNPS TRANSITION (SHNPS.TBARR3)
- WUNZE TRANSITION (WUNZE.TBARR3)

(CONTINUED ON FOLLOWING PAGE)