

| | | |
|--|------------------------|--|
| WAAS CH 90318 W34B | APP CRS 353° | Rwy Idg 12000 TDZE 5354 Apt Elev 5434 |
|--|------------------------|--|

RNAV (GPS) Y RWY 34R

DENVER INTL (DEN)

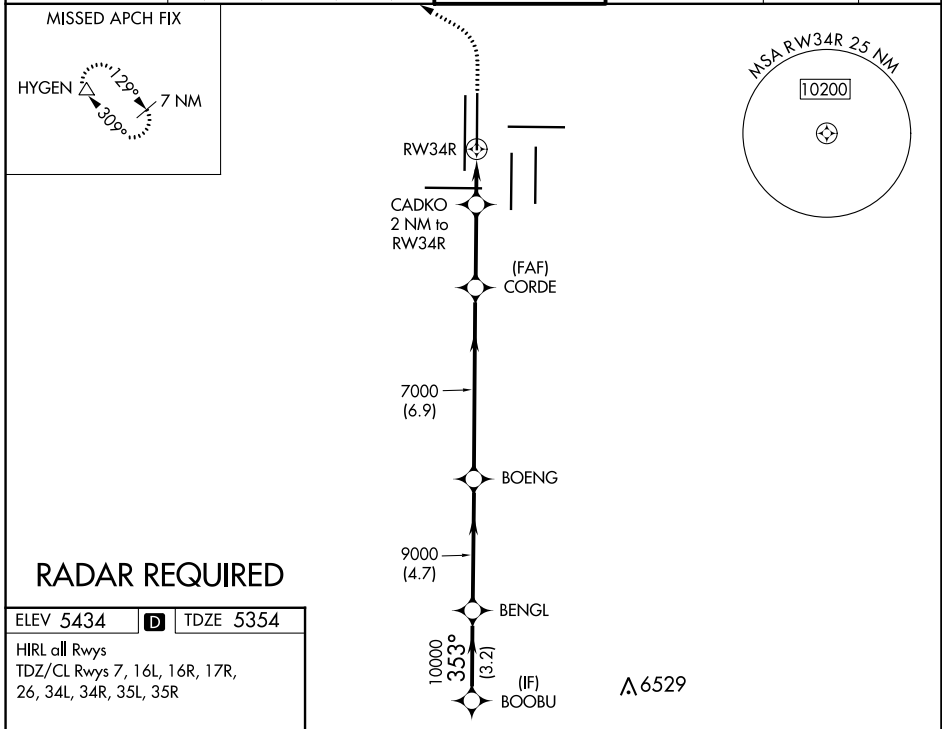
⚠ For uncompensated Baro-VNAV systems, LNAV/VNAV NA below -25°C (-13°F) or above 46°C (114°F). DME/DME RNP-0.3 NA. LNAV procedure NA during simultaneous operations. Simultaneous approach authorized with Rwy 35L/R. Use of FD or AP providing RNAV track guidance required during simultaneous operations.

ALS-F-2



MISSED APPROACH: Climb to 6000 then climbing left turn to 10000 direct HYGEM and hold.

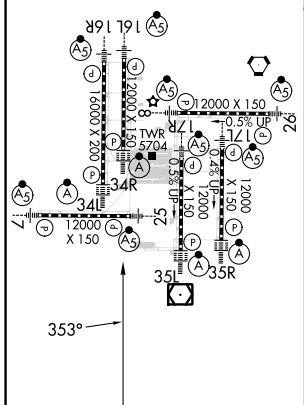
| | | | | | |
|--|---|-------------------------------------|----------------------------------|---------------------------|-------|
| D-ATIS ARR 125.6 379.9 DEP 134.025 | DENVER APP CON 119.3 307.3 (NORTH) 120.35 379.3 (SOUTH) | DENVER TOWER 135.3 351.95 | GND CON 121.35 379.175 | CLNC DEL 118.75 | CPDLC |
|--|---|-------------------------------------|----------------------------------|---------------------------|-------|



RADAR REQUIRED

| | | |
|-----------|----------|-----------|
| ELEV 5434 | D | TDZE 5354 |
|-----------|----------|-----------|

HIRL all Rwys
TDZ/CL Rwy 7, 16L, 16R, 17R,
26, 34L, 34R, 35L, 35R



| | | | | |
|--|----------------------|-------------|----------|-----------------------|
| VGSi and RNAV glidepath not coincident (VGSi Angle 3.00/TCH 63). | | 6000 | 10000 | HYGEM |
| | | ↑ | ↙ | △ |
| BOOBU | BENGL | BOENG | CORDE | CADKO 2 NM to RWY 34R |
| 10000 | 353° | 10000 | 7000 | *LNAV only |
| GP 3.00° | TCH 59 | 9000 | 7000 | *6040 |
| ← 3.2 NM | | ← 4.7 NM | ← 6.9 NM | ← 3 NM |
| ← 2 NM | ← 2 NM | | | |
| CATEGORY | A | B | C | D |
| LPV DA | 5554/18 200 (200-½) | | | |
| LNAV/VNAV DA | 5838/60 484 (500-1¼) | | | |
| LNAV MDA | 5940/24 | 586 (600-½) | 5940-1¼ | 586 (600-1¼) |

SW-1, 22 FEB 2024 to 21 MAR 2024

SW-1, 22 FEB 2024 to 21 MAR 2024