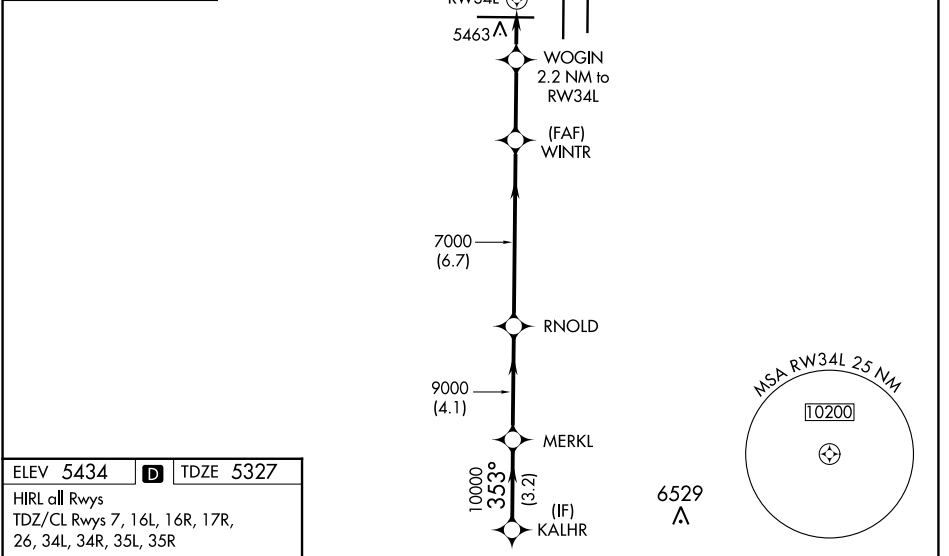
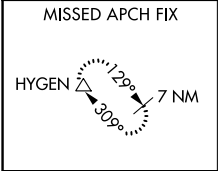


WAAS CH <b>45619</b> <b>W34A</b>	APP CRS <b>353°</b>	Rwy Idg <b>16000</b> TDZE <b>5327</b> Apt Elev <b>5434</b>
--	------------------------	--

# RNAV (GPS) Y RWY 34L

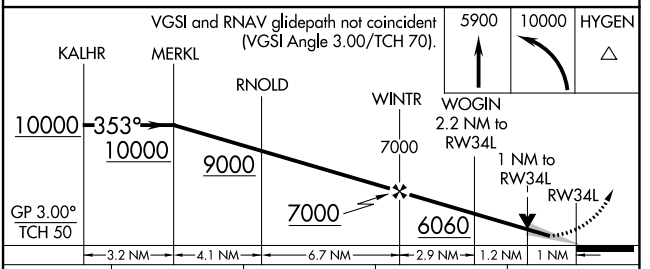
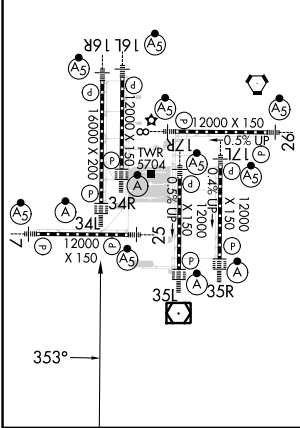
DENVER INTL (DEN)

RNP APCH-GPS.		ALSF-2		MISSED APPROACH: Climb to 5900 then climbing left turn to 10000 direct HYGEN and hold.		
<p>▼ LNAV procedure NA during simultaneous operations. Use of FD or AP required during simultaneous operations. Simultaneous approach authorized with Rwy 35L/R. For uncompensated Baro-VNAV systems, LNAV/VNAV NA below -22°C or above 54°C.</p>						
D-ATIS ARR <b>125.6 379.9</b> DEP <b>134.025</b>	DENVER APP CON <b>119.3 307.3 120.35 379.3</b> (NORTH) (SOUTH)		DENVER TOWER <b>135.3 351.95</b>	GND CON <b>121.35 379.175</b>	CLNC DEL <b>118.75</b>	CPDLC



ELEV 5434	<b>D</b>	TDZE 5327
-----------	----------	-----------

HIRL all Rwys  
TDZ/CL Rwys 7, 16L, 16R, 17R,  
26, 34L, 34R, 35L, 35R



CATEGORY	A	B	C	D
LPV DA	5527/18		200 (100-½)	
LNAV/VNAV DA	5663/26		336 (300-½)	
LNAV MDA	5720/24	393 (300-½)	5720/35	393 (300-¾)

SW-1, 22 FEB 2024 to 21 MAR 2024

SW-1, 22 FEB 2024 to 21 MAR 2024