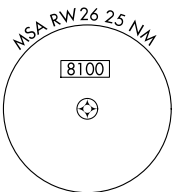
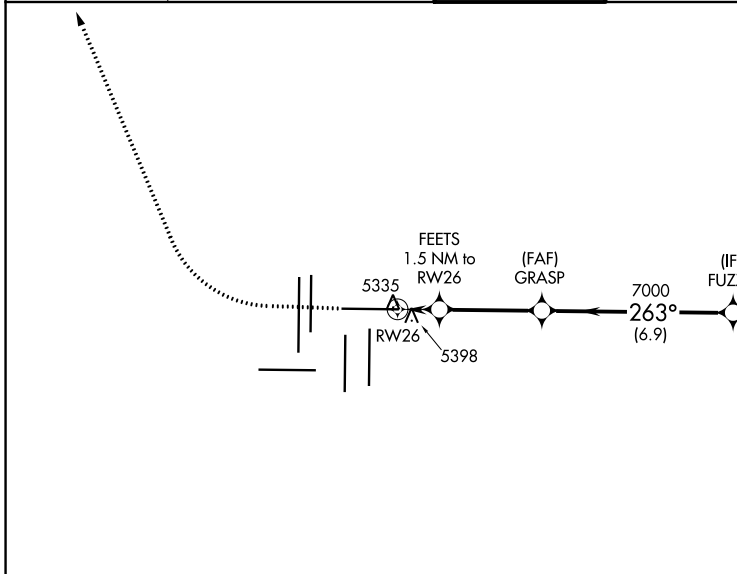
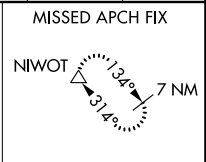


WAAS CH 58128 W26A	APP CRS 263°	Rwy Idg 12000 TDZE 5309 Apt Elev 5434
--	------------------------	--

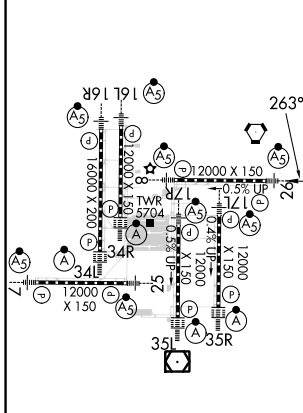
RNAV (GPS) Y RWY 26

DENVER INTL (DEN)

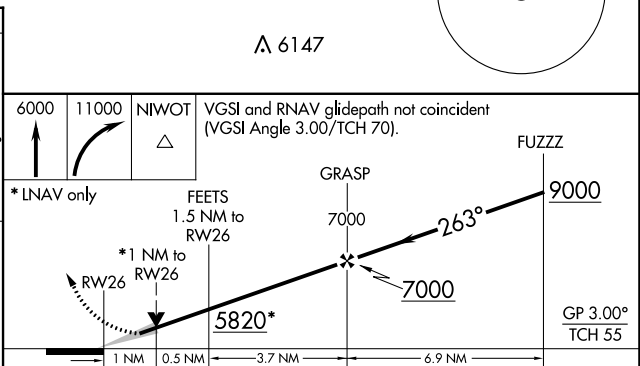
RNP APCH. RADAR required.		MALSR 	MISSED APPROACH: Climb to 6000 then climbing right turn to 11000 direct NIWOT and hold.		
<p>▼ For uncompensated Baro-VNAV systems, LNAV/VNAV NA below -25°C or above 46°C. Simultaneous approach authorized with Rwy 25. For inoperative ALS, increase LNAV/VNAV all Cats visibility to RVR 4000 and LNAV Cat C/D visibility to RVR 5500. LNAV procedure NA during simultaneous operations. Use of FD or AP providing RNAV track guidance required during simultaneous operations.</p>					
D-ATIS ARR 125.6 379.9 DEP 134.025	DENVER APP CON 119.3 307.3 (NORTH) (SOUTH)	DENVER TOWER 132.35 239.275	GND CON 121.85 377.1	CLNC DEL 118.75	CPDLC



ELEV 5434	D	TDZE 5309
-----------	----------	-----------



HIRL all Rwys
TDZ/CL Rwys 7, 16L, 16R, 17R,
26, 34L, 34R, 35L, 35R



6000	11000	NIWOT	VGSi and RNAV glidepath not coincident (VGSi Angle 3.00/TCH 70).	
* LNAV only		FEETS 1.5 NM to RWY 26	GRASP 7000	FUZZ 9000
* 1 NM to RWY 26		5820*	7000	GP 3.00° TCH 55
1 NM	0.5 NM	3.7 NM	6.9 NM	
CATEGORY	A	B	C	D
LPV DA	5509/18		200 (100-½)	
LNAV/VNAV DA	5559/24		250 (200-½)	
LNAV MDA	5660/24		5660/30 351 (300-⅝)	

SW-1, 22 FEB 2024 to 21 MAR 2024

SW-1, 22 FEB 2024 to 21 MAR 2024